

PLAN OF SUBDIVISION OF PART OF
DISTRICT LOT 2400
 CARIBOO DISTRICT - BRITISH COLUMBIA

SCALE: 1" = 200'

NOTE: Bearings are astronomic, derived from the
 South Boundary of D. L. 2400 as shown on Plan 20053.

LEGEND: • OIP denotes an old iron pin found.
 • IP denotes an iron pin set.

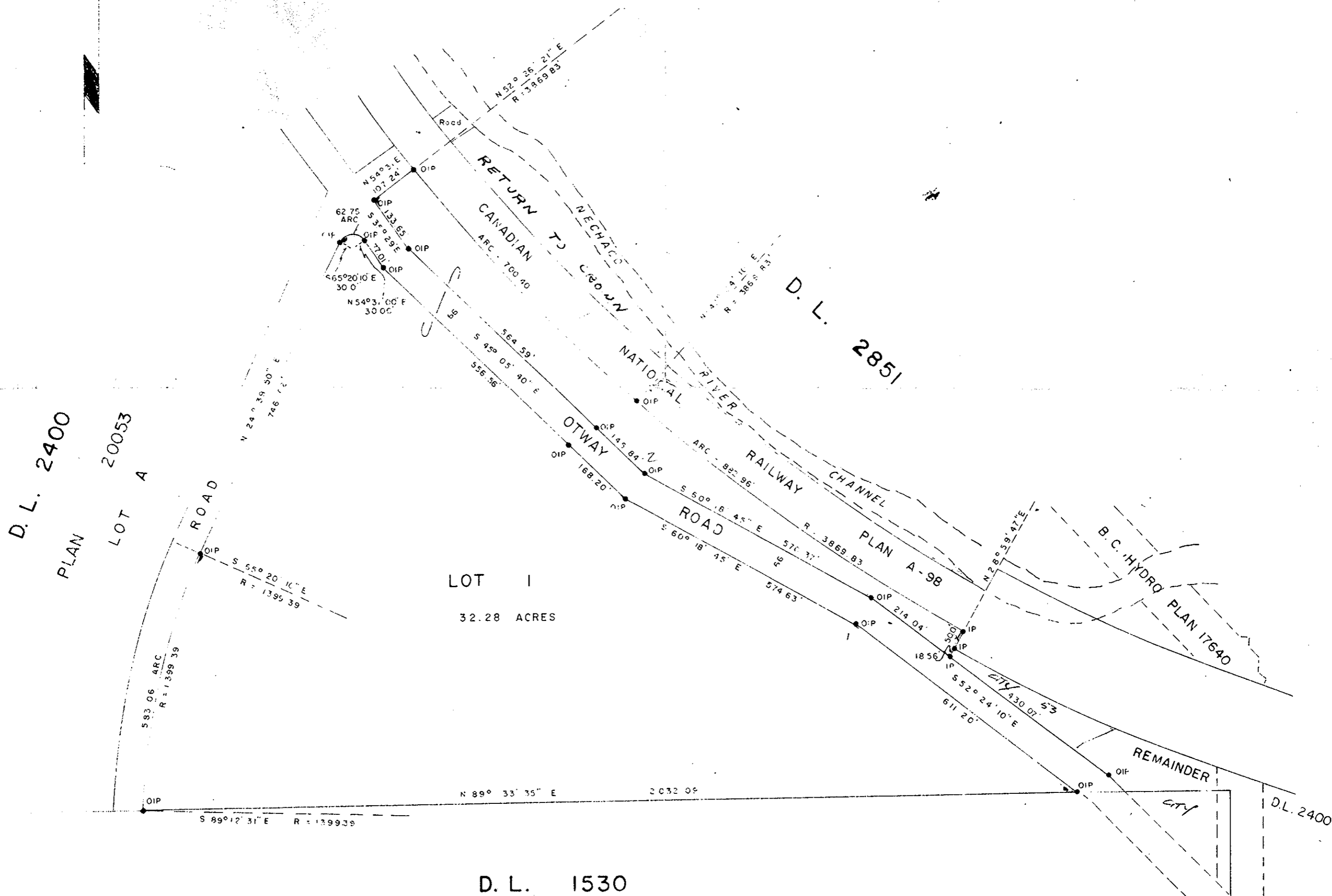
PLAN NO. 20236

APPROVED BY THE ENGINEER
 Prince George, B.C.

RECEIVED

OCT 31 1972

CITY ASSESSOR
 PRINCE GEORGE



DONALD A. DUFFY
 Surveyor
 21st February 1972

M. & T. ROCK & GRAVEL LTD.

18th July 1972

P. E. Duff
 Appraising Officer, City of Prince George

This plan lies within the Fraser Valley Regional District

3125 B ER, EB