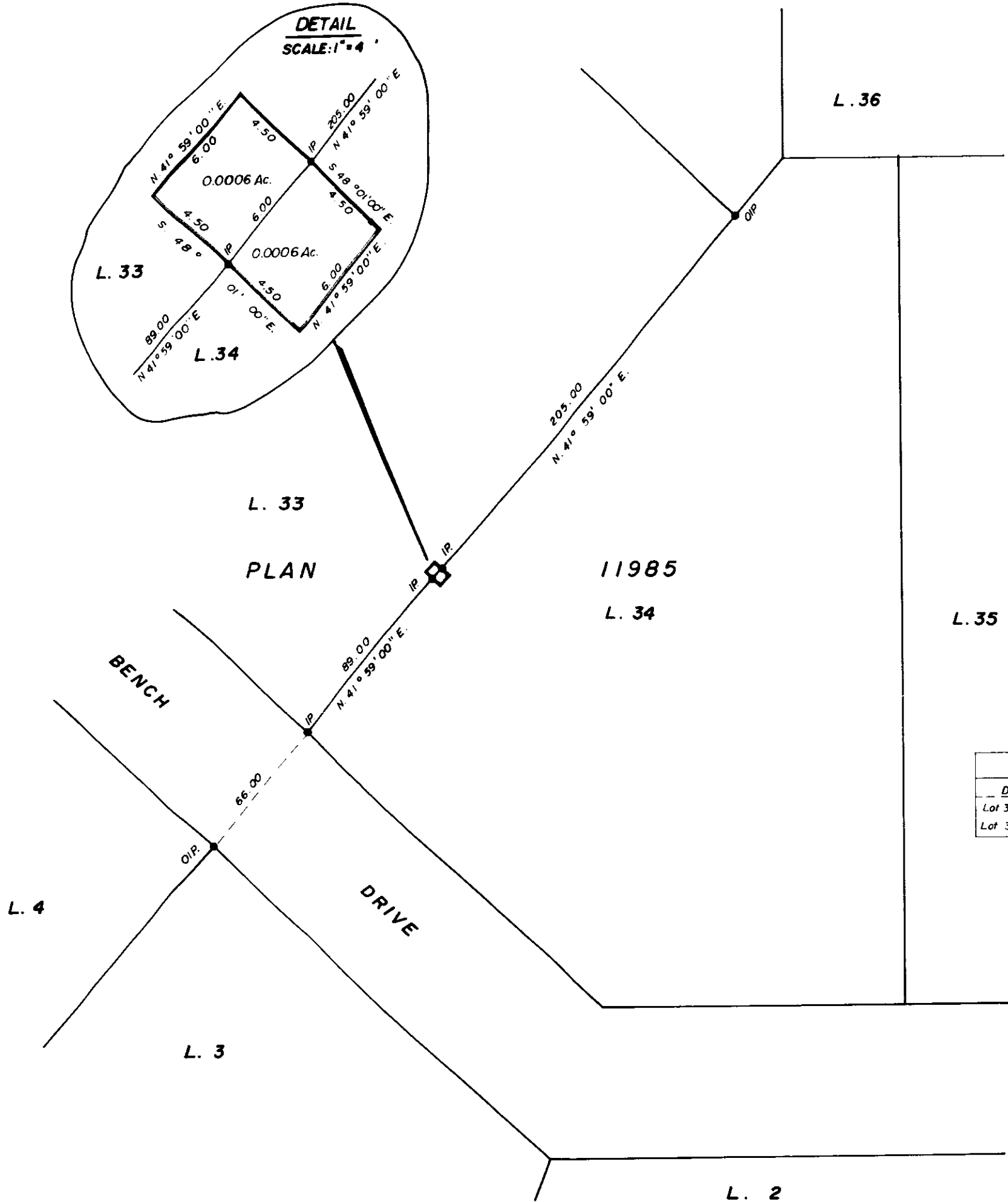


PLAN NO: 20228

DEPOSITED IN THE LAND REGISTRY OFFICE AT PRINCE GEORGE THIS 17 DAY OF JULY 1972

*E.J. Schmalz*  
REGISTRAR

**PLAN OF RIGHT-OF-WAY (EASEMENT)  
ON LOTS 33 and 34, PLAN 11985,  
D.L. 2101, CARIBOO DISTRICT.  
SCALE: 1" = 40'**



BOOK OF REFERENCE	
DESCRIPTION	AREA
Lot 33, Plan 11985	0.0006 Ac.
Lot 34, Plan 11985	0.0006 Ac.

I, V. Barrell, of the City of Prince George, British Columbia Land Surveyor make oath and say that I was present at and did personally superintend the survey represented by this plan, and that the survey and plan are correct the said survey was completed on the 2 day of June 1972.

*Victor Barrell*  
B.C.L.S.

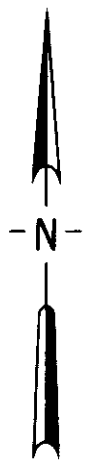
SWORN BEFORE ME AT Prince George, B.C. THIS 6 DAY OF June 1972

*L. Wilson*  
A COMMISSIONER FOR TAKING AFFIDAVITS FOR BRITISH COLUMBIA

BEARINGS ARE ASTRONOMIC AND ARE DERIVED FROM EASTERLY BOUNDARY LOT 33 SHOWN AS N 41° 59' 00" E. ON PLAN 11985.

- P Con ... STANDARD CONCRETE POST
- PP ... STANDARD PIPE POST
- CIP ... STANDARD CAPPED IRON POST
- IP ... STANDARD IRON POST
- BT ... BEARING TREE
- O ... DENOTING 'OLD'

THIS PLAN LIES WITHIN THE FRASER FORT - GEORGE REGIONAL DISTRICT.



McWILLIAM - WHYTE - GOBLE & ASSOCIATES  
B.C. LAND SURVEYORS  
KAMLOOPS - SMITHERS - PRINCE GEORGE  
REF. NO.: 72136