

PLAN OF RIGHT-OF-WAY THROUGH
LOTS 15 & 16, PLAN 20218
N.E. 1/4 DISTRICT LOT 4047
CARIBOO DISTRICT, BRITISH COLUMBIA

SCALE: 1" = 100'

NOTE: Bearings are astronomic, derived from the
boundary between lots 15 & 16 as shown on
Plan 20218

LEGEND: • OIP denotes an old iron pin found.

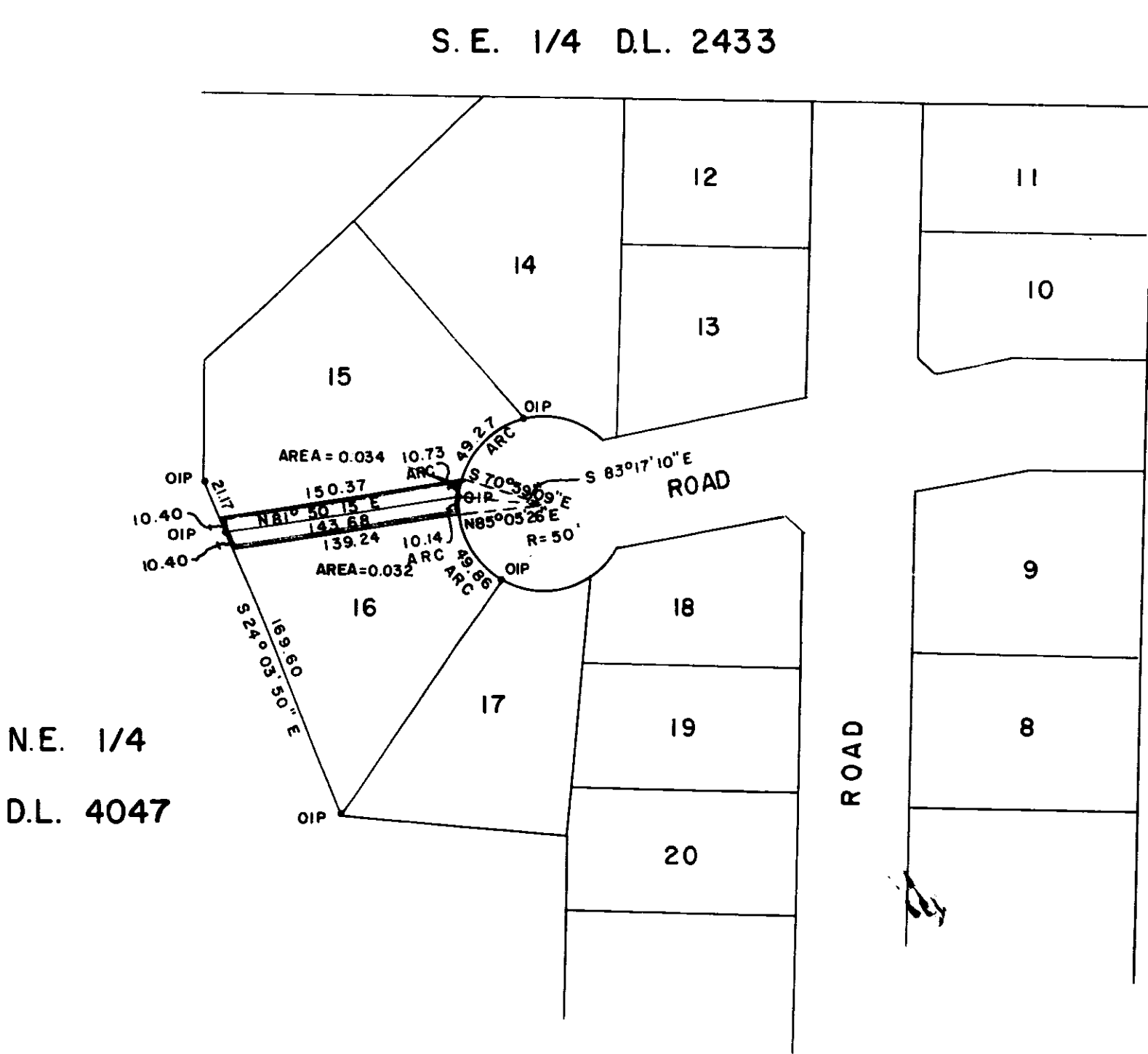
PLAN N^o 20227

Deposited in the Land Registry
Office at Prince George, B.C. this
13th day of July, 1972

Deputy W. Hardy
registrar



S. E. 1/4 D.L. 2433



N.E. 1/4
D.L. 4047

I, DONALD A. DUFFY of the City of Prince George,
a British Columbia Land Surveyor, make oath and say
that I was present at and did personally superintend
the survey represented by this plan and that the survey
and plan are correct. The said survey was completed
on the 23 day of June, 1972

Donald A. Duffy
B.C.L.S.

Sworn before me this 27
day of June, 1972

Heid
A Commissioner for taking Affidavits
for British Columbia.

Approved under the Land Registry Act
this 27 day of JUNE, 1972

W. Hardy
Approving Officer, Dept. of Highways

This plan lies within the Fraser-Fort George
Regional District.