

PLAN OF SUBDIVISION OF PART OF  
N.E. 1/4 DISTRICT LOT 4047  
CARIBOO DISTRICT, BRITISH COLUMBIA

SCALE: 1" = 100'

NOTE: Bearings are astronomic, derived from the  
North boundary of Lot 21, Plan 19871.

LEGEND: • OIP denotes an old iron pin found.  
• IP denotes an iron pin set.

PLAN N<sup>o</sup> 20218

Deposited in the Land Registry  
Office at Prince George, B.C. this  
6<sup>TH</sup> day of JULY, 1972

"E.T. SCHOOLEY"  
Registrar

PER: (SURVEYOR L.R.O.)

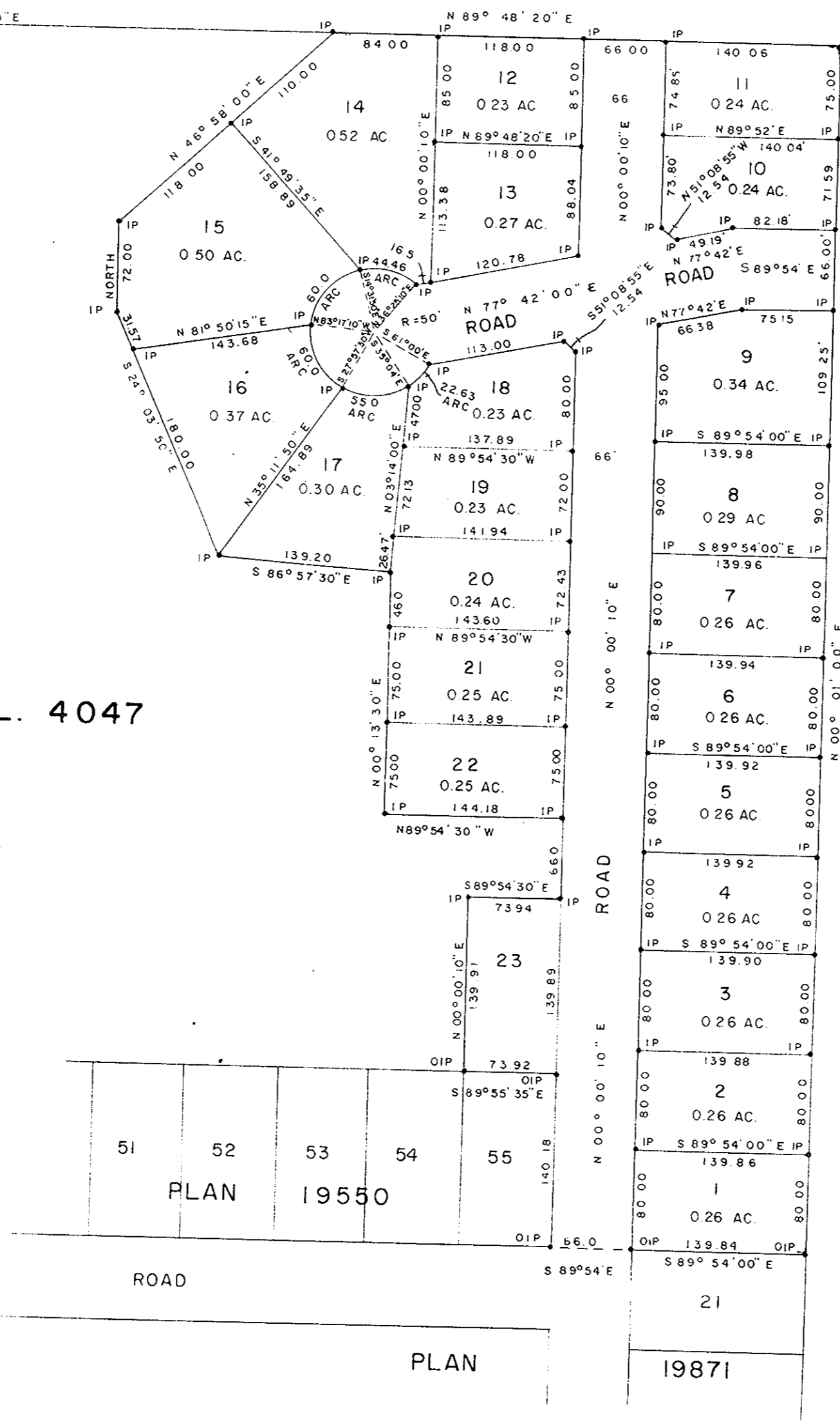
S.E. 1/4 D.L. 2433

S.W. 1/4 D.L. 4027

40  
PLAN 18801

N.E. 1/4 D.L. 4047

N.W. 1/4 D.L. 4028



GLENVIEW ESTATES LTD.

*Robert George*  
President

MORTGAGEE  
CENTRAL WHOLESALE  
IMPORTING CO. LTD.

*H.E. Helmer*  
President

Approved under the Land Registry Act  
this 4<sup>TH</sup> day of JULY, 1972

*John Swales*  
Approving Officer, Dept. of Highways.

This plan lies within the Fraser-Fort George  
Regional District.

Sworn before me this 5<sup>TH</sup>  
day of JULY, 1972

B.C.L.S.

*C. J. Manton*  
A Commissioner for taking Affidavits  
for British Columbia.