

RECEIVED

OCT 23 1972

CITY ASSESSOR
PRINCE GEORGE

PLAN OF SUBDIVISION OF
LOTS 1 TO 35 INCLUSIVE AND
CLOSED LANE, AS SHOWN ON PLAN 19934
BLOCK 1, PLAN 796 -
DISTRICT LOT 932
CARIBOO DISTRICT, BRITISH COLUMBIA

PLAN No 20192

Deposited in the Land Registry
Office at Prince George, B.C. this
21st day of JUNE, 1972

E. J. Schooley
Registrar

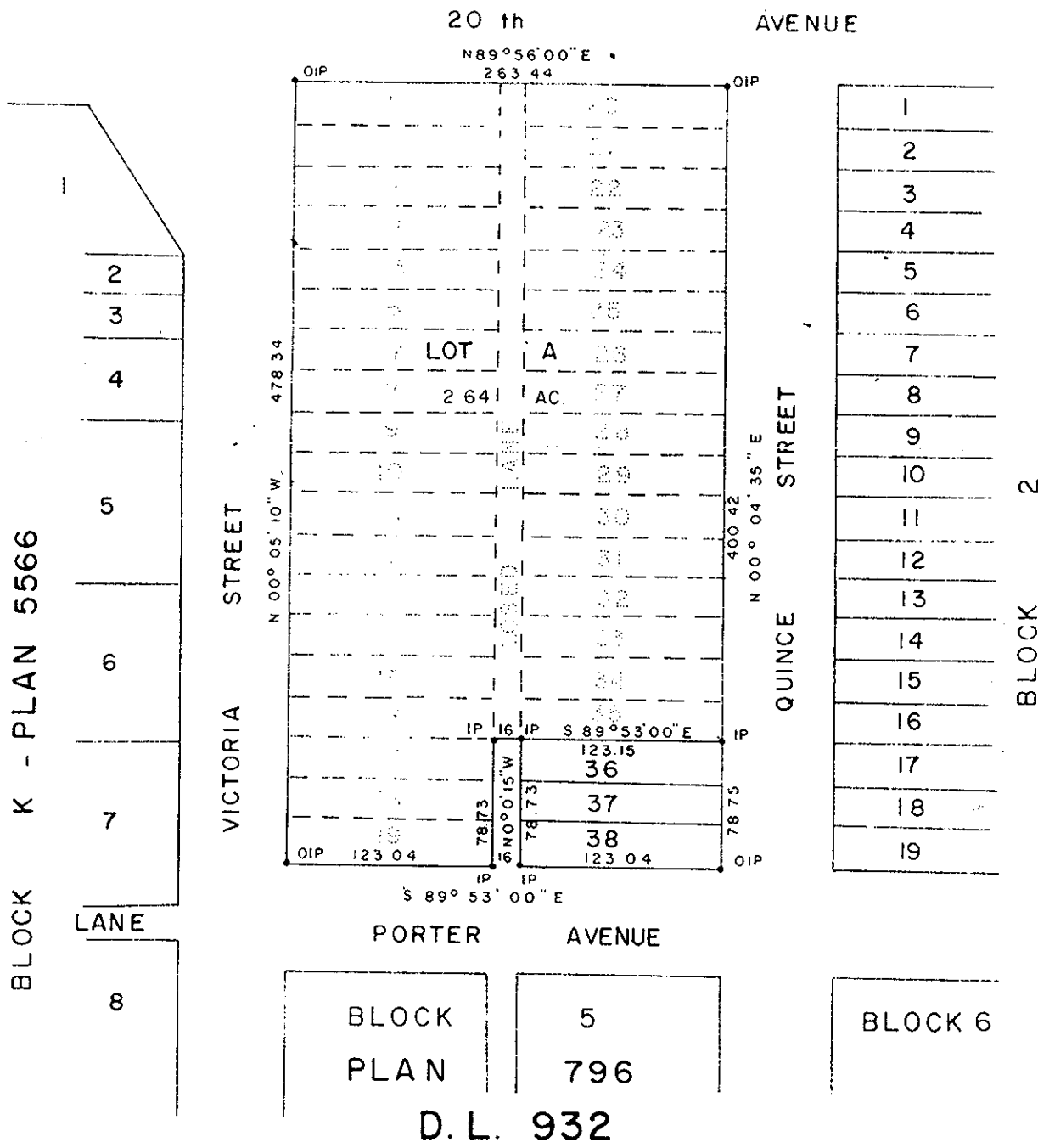
SCALE: 1" = 100'

NOTE: Bearings are astronomic, derived
from the West boundary of Block
1, as shown on Plan 19928

LEGEND: •OIP denotes an old iron pin found.
•IP denotes an iron pin set.

N

D. L. 343
LOT A - PLAN 11923



RICE CHEVROLET OLDSMOBILE LTD

I, DONALD A. DUFFY of the City of Prince George,
a British Columbia Land Surveyor, make oath and say
that I was present at and did personally superintend
the survey represented by this plan and that the survey
and plan are correct. The said survey was completed
on the 2nd day of MAY, 1972

Approved under the Land Registry Act
this 29th day of MAY, 1972

C. E. Olat
Approving Officer, City of Prince George

Sworn before me this
day of MAY, 1972

B.C.S.

This plan lies within the Fraser-Fort George
Regional District

A Commissioner for taking Affidavits
for British Columbia

W. S. OSHER & ASSOCIATES
LAND SURVEYORS
PRINCE GEORGE - B.C.
B.W. 4229