

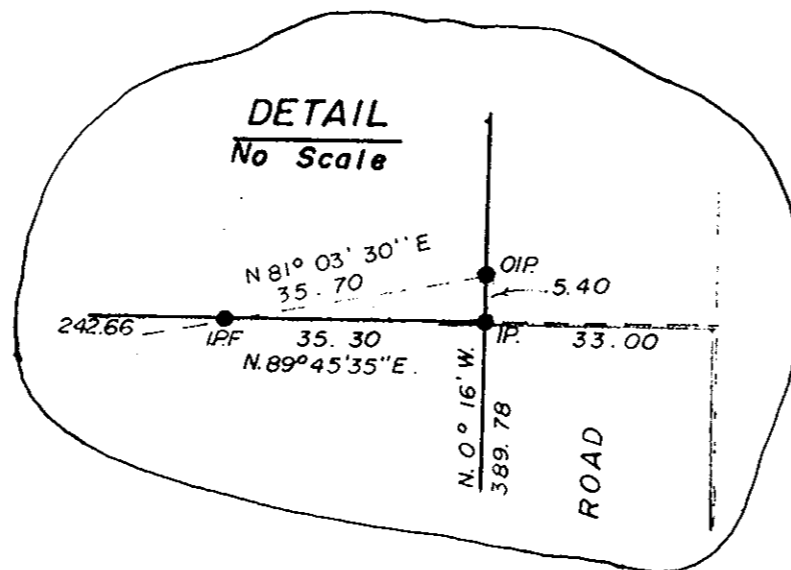
PLAN NO. 20168

DEPOSITED IN THE LAND REGISTRY OFFICE AT PRINCE GEORGE THIS 15th DAY OF JUNE 1972

PLAN OF SUBDIVISION OF PART OF S.E. 1/4 D.L. 954 (PLAN B 1643) CARIBOO DISTRICT.

W. Sandy
DEPUTY REGISTRAR

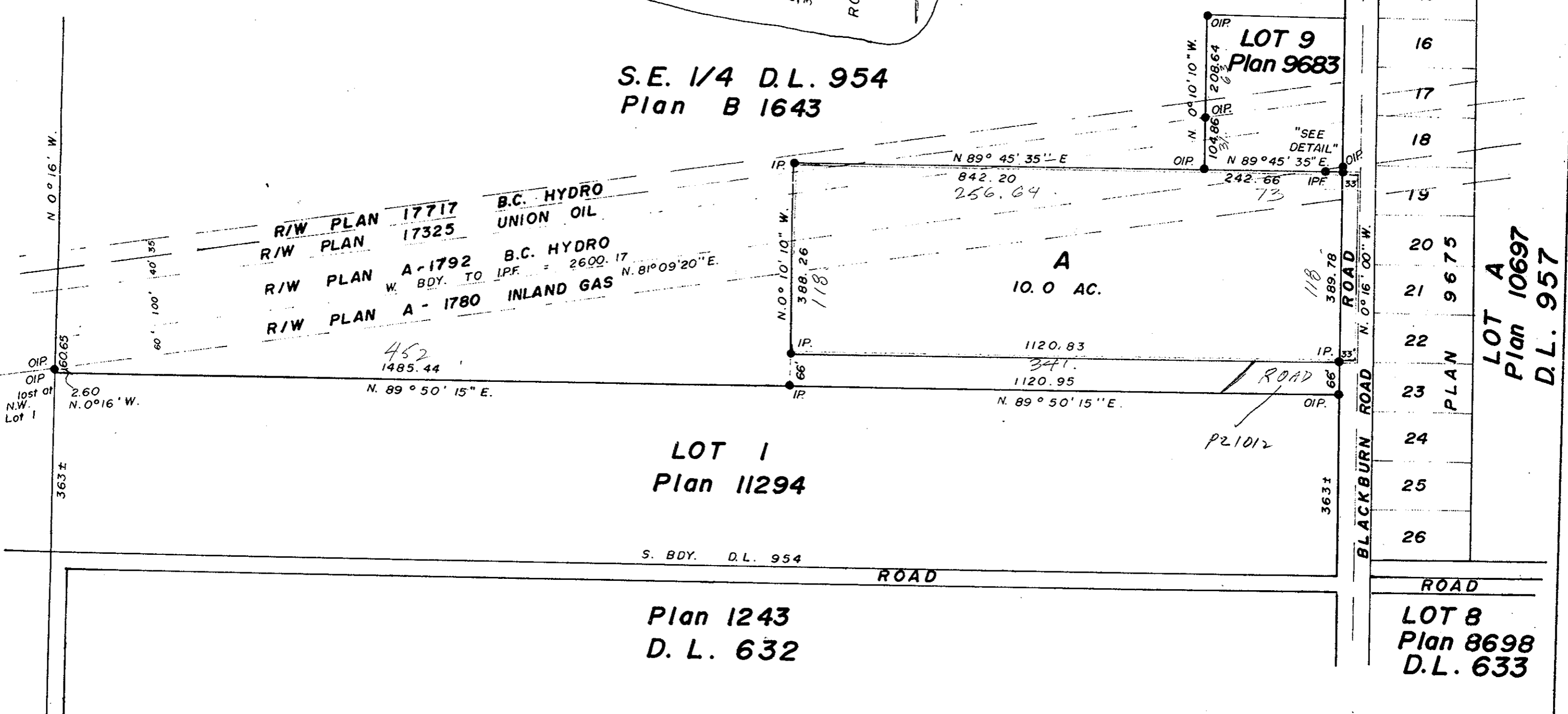
Scale : 1" = 200'



S.E. 1/4 D.L. 954 Plan B 1643

LOT A Plan 14964

LOT 9 Plan 9683



LOT 1 Plan 11294

Plan 1243 D.L. 632

LOT 8 Plan 8698 D.L. 633

I, V. BARTELL OF THE CITY OF PRINCE GEORGE, BRITISH COLUMBIA LAND SURVEYOR MAKE OATH AND SAY THAT I WAS PRESENT AT AND DID PERSONALLY SUPERINTEND THE SURVEY REPRESENTED BY THIS PLAN, AND THAT THE SURVEY AND PLAN ARE CORRECT. THE SAID SURVEY WAS COMPLETED ON THE 21 DAY OF MARCH 1972.

Victor Bartell
B.C.L.S.

SWORN BEFORE ME AT PRINCE GEORGE, B.C., THIS 23 DAY OF March 1972.

William
A COMMISSIONER FOR TAKING AFFIDAVITS FOR BRITISH COLUMBIA

BEARINGS ARE ASTROGNOMIC AND ARE DERIVED FROM O.I.P.s. ALONG W. BDY. BLACKBURN RD. SHOWN AS N. 0° 16' W. ON PLAN A-1780 & 11294.

- P Con STANDARD CONCRETE POST
- PP STANDARD PIPE POST
- C.I.P. STANDARD CAPPED IRON POST
- I.P. STANDARD IRON POST
- BT BEARING TREE
- O DENOTING 'OLD'
- I.P.F. STANDARD IRON POST FOUND.

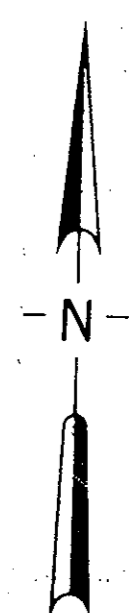
THIS PLAN LIES WITHIN THE FRASER FORT GEORGE REGIONAL DISTRICT.

APPROVED UNDER THE LAND REGISTRY ACT THIS 3 DAY OF MAY 1972

W. Sandy
APPROVING OFFICER

OWNER

WITNESS



MCWILLIAM - WHYTE - GOBLE & ASSOCIATES
B.C. LAND SURVEYORS
KAMLOOPS - SMITHERS - PRINCE GEORGE
REF. NO.: 70177