

# PLAN OF SUBDIVISION OF PART OF THE NORTH 1/2 OF THE NORTH 1/2 OF THE SOUTH WEST 1/4, D.L. 633 CARIBOO DISTRICT

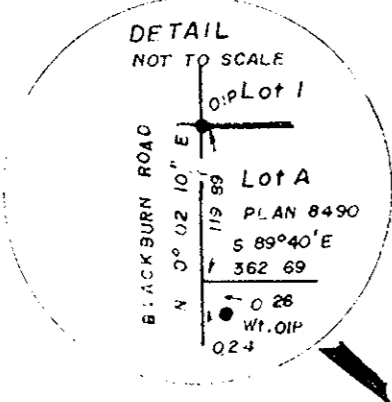
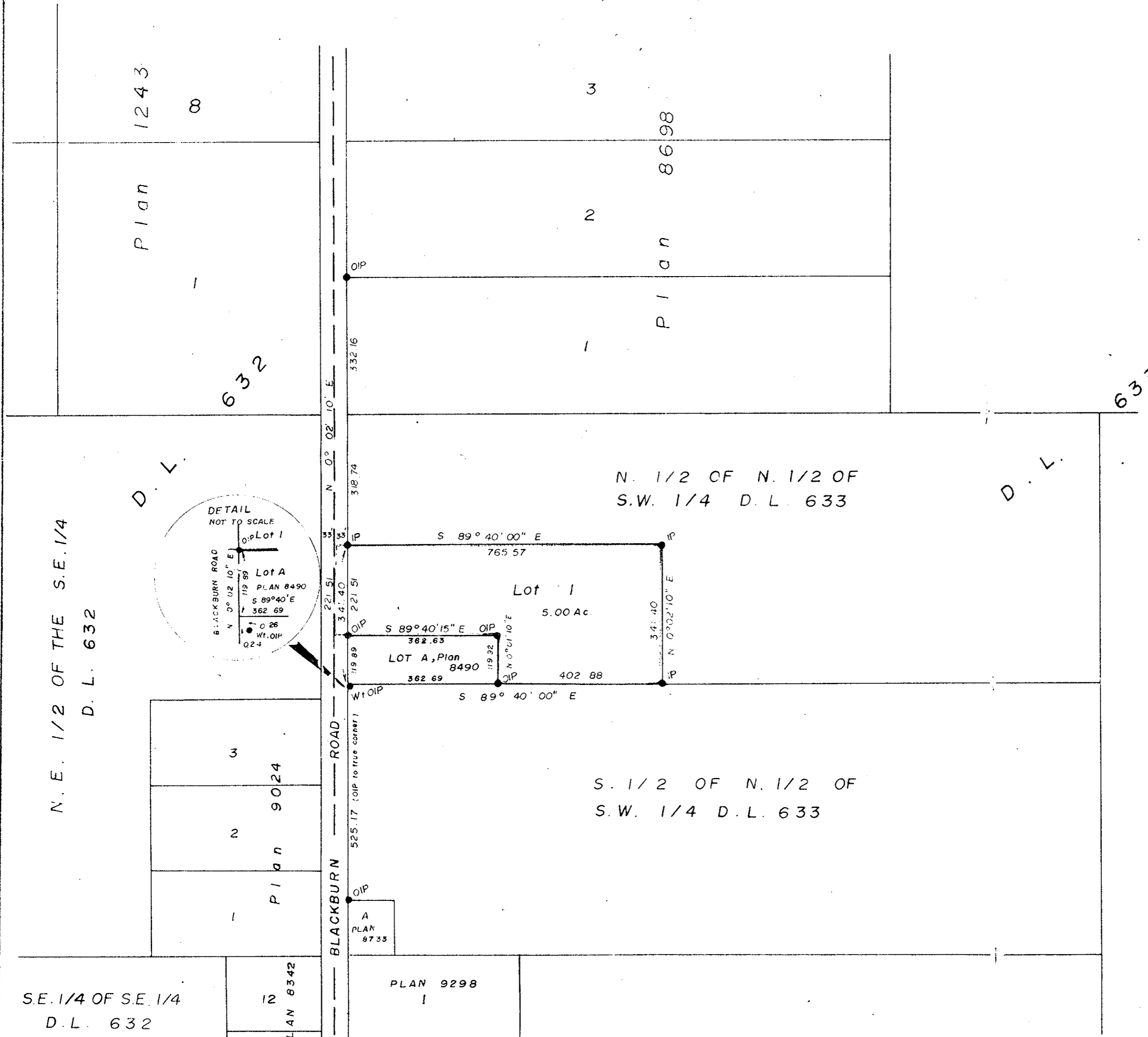
PLAN NO: 20123

PRINCE GEORGE 31st MAY 1972

"E. T. McHODDY"

REG: [Signature]  
SURVEYOR L.R.O.

Scale: 1" = 200'



I, V. BARTELL, OF THE CITY OF PRINCE GEORGE  
BRITISH COLUMBIA, DO HEREBY MAKE OATH AND SAY  
THAT I WAS PRESENT AT AND DID PERSONALLY SUPERINTEND  
THE SURVEY REPRESENTED BY THIS PLAN, AND THAT THE  
SURVEY AND PLAN ARE CORRECT, THE SAID SURVEY WAS  
COMPLETED ON THE 30 DAY OF August 1971

[Signature]  
WITNESSED BEFORE ME AT Prince George  
this 31st day of September 1971

BEARING AND DISTANCE, AND ARE THE SAME AS  
OIP ON NW CORN. LOT A, PLAN 8733 AND  
OIP ON NW CORN. LOT 1, PLAN 8698  
SHOWN AS N 0° 02' 10" E ON PLAN 8698

- [Symbol] [Text]
- [Symbol] [Text]
- [Symbol] [Text]
- [Symbol] [Text]
- [Symbol] [Text]

THIS PLAN LIES WITHIN THE FRASER  
FORT GEORGE REGIONAL DISTRICT

9 May 72  
[Signature]

[Signature]

16/11/72

