

PLAN OF SUBDIVISION OF
 LOTS 63 AND 64, PLAN 1329
 DISTRICT LOT 4377
 CARIBOO DISTRICT, BRITISH COLUMBIA

SCALE: 1" = 100'

NOTE: Bearings are astronomic, derived from the east boundary of Lots 1 to 6, Block E, Plan 15401.

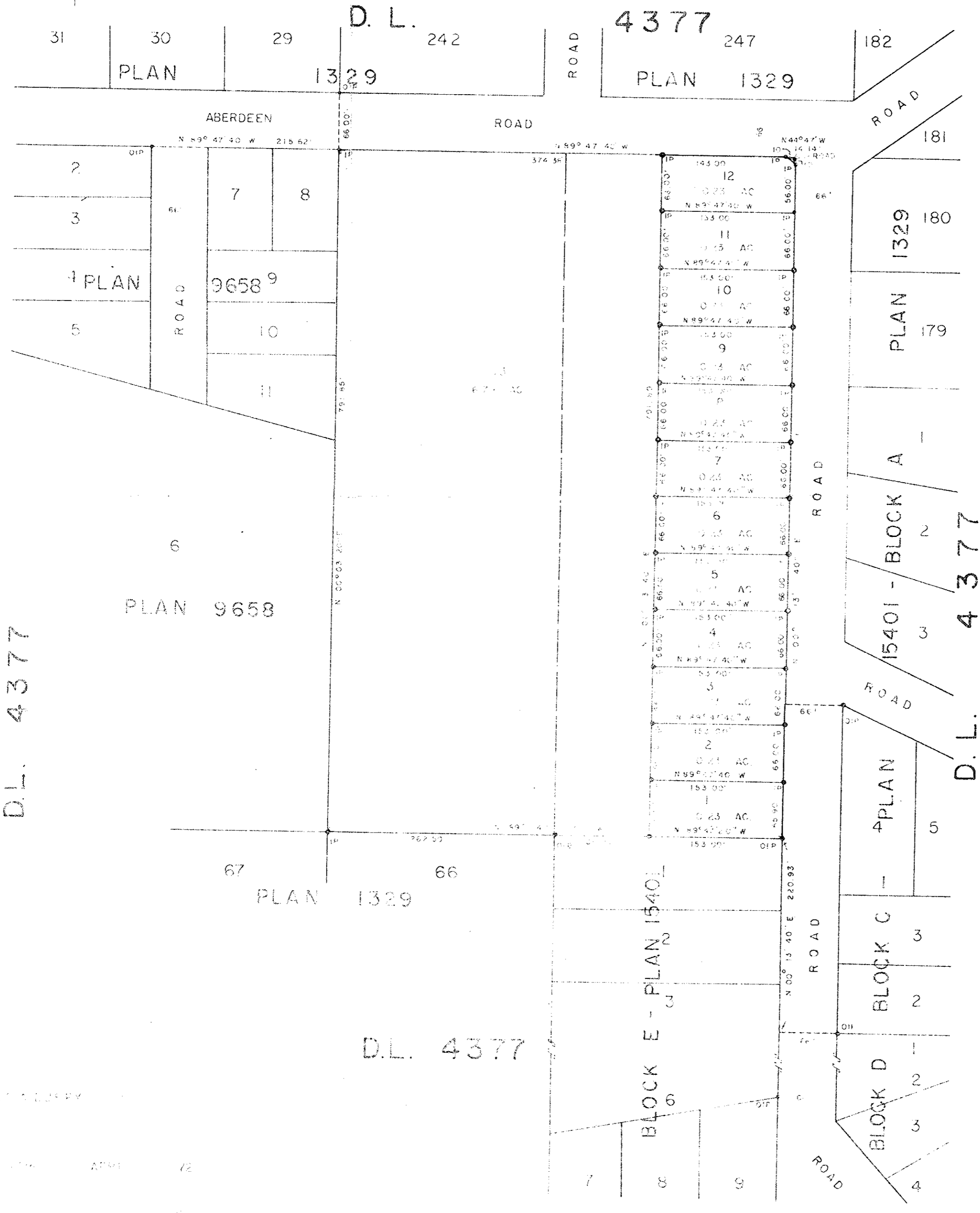
LEGEND: • OIP denotes an old iron pin found.
 • IP denotes an iron pin set on this survey.

PLAN No 20086

Deposited in the Land Registry Office at Prince George, B.C. this 17th day of MAY, 1972

"E. T. SHOOLEY"
 Registrar

PER: [Signature]
 (SURVEYOR L.R.O.)



D.L. 4377

D.L. 4377

1945 MATURE

4 MAY 1972