

PLAN OF SUBDIVISION OF PART OF
 FRAC. S.E. 1/4 AND EAST 1/2 OF S.W. 1/4 OF
 DISTRICT LOT 753
 CARIBOO DISTRICT, BRITISH COLUMBIA

SCALE: 1" = 100'

NOTE: Bearings are astronomic, derived from the West boundary of Simon Fraser Avenue as shown on Plan 16269.

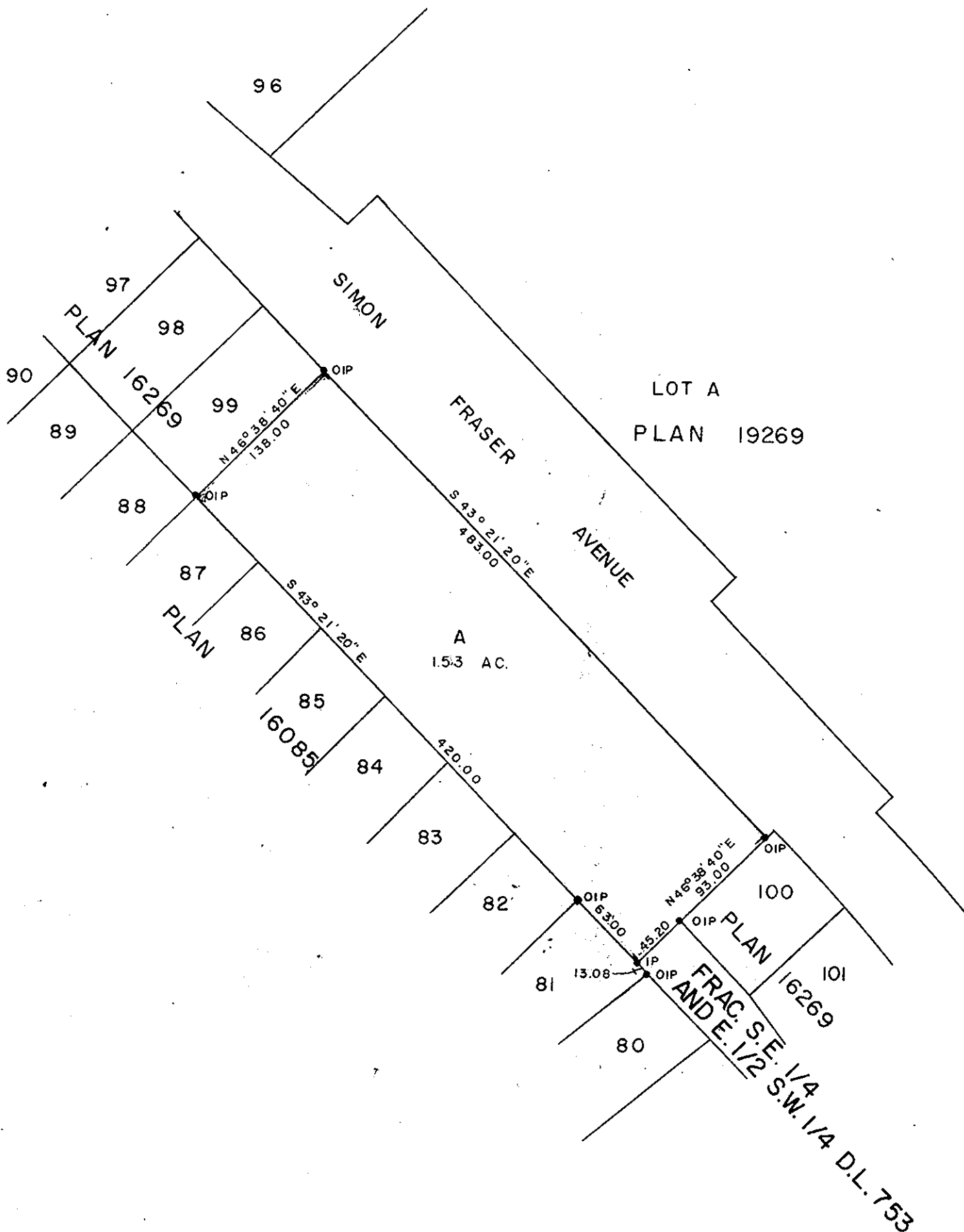
LEGEND: •OIP denotes an old iron pin found.
 •IP denotes an iron pin set.

PLAN N^o **20078**

Deposited in the Land Registry Office at Prince George, B.C. this 15TH day of MAY, 1972

"E. T. SCHOOLEY"
 Registrar

PER: A. Spindler
 (SURVEYOR L.R.O.)



I, DONALD A. DUFFY of the City of Prince George, a British Columbia Land Surveyor, make oath and say that I was present at and did personally superintend the survey represented by this plan and that the survey and plan are correct. The said survey was completed on the 22nd day of October, 1971.

[Signature]
 B.C.L.S.

Sworn before me this 8TH day of FEB, 1972

[Signature]
 A Commissioner for taking Affidavits for British Columbia.

ROMAN CATHOLIC EPISCOPAL CORPORATION OF PRINCE RUPERT

Fergus O'Grady

Reapproved. This 21 day of APRIL, 1972

[Signature]
 Approving Officer, Dept. of Highways

Approved under the Land Registry Act this 3 day of FEBRUARY, 1972

[Signature]
 Approving Officer, Dept. of Highways

This plan lies within the Fraser-Fort George Regional District.

W. D. USHER & ASSOCIATES
 LAND SURVEYORS
 PRINCE GEORGE - B.C.

3507B