

RECEIVED

MAY 29 1972

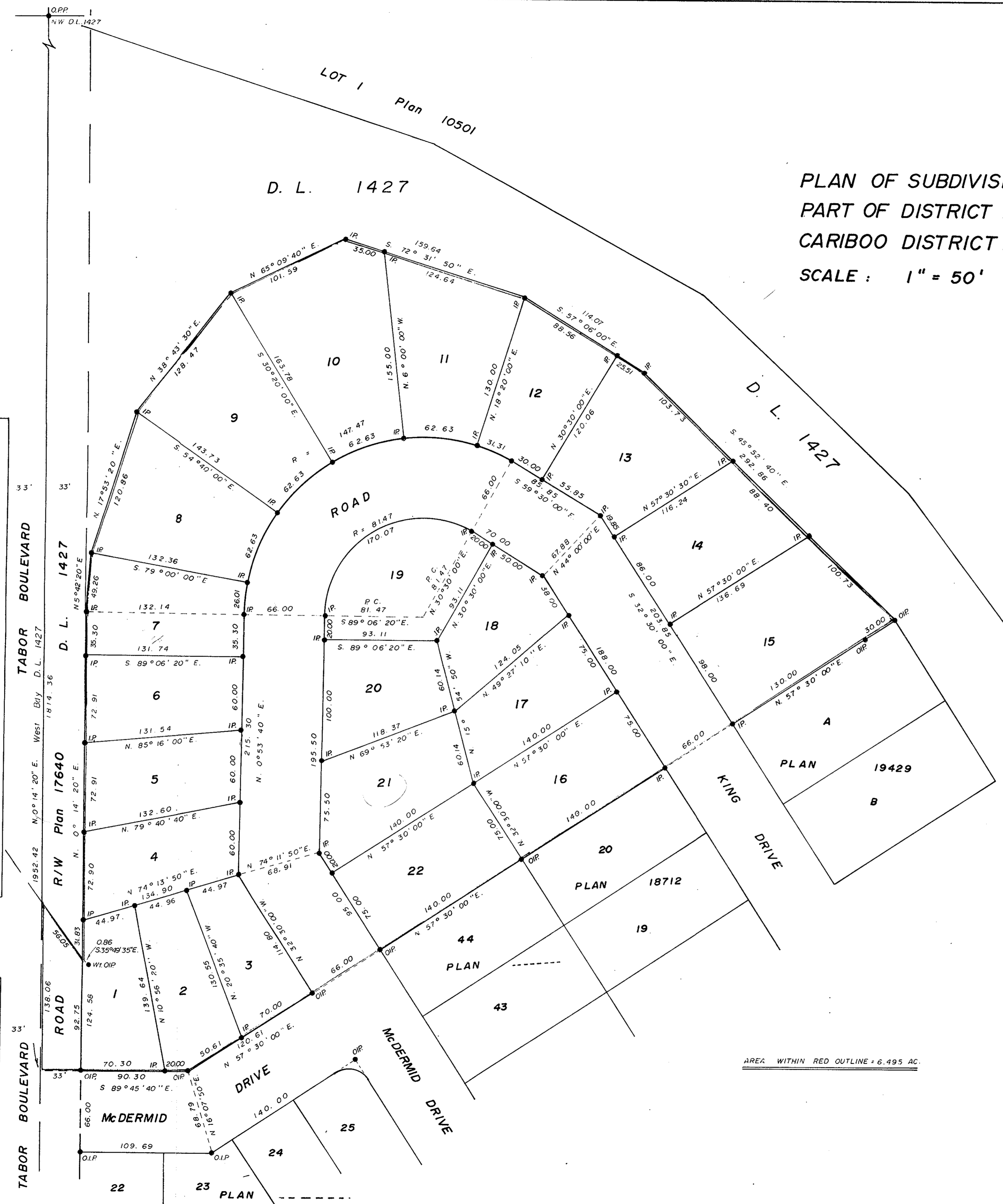
CITY ASSESSOR
PRINCE GEORGE

PLAN NO. 20031
Deposited in the Land Registry Office at
Prince George this 14th day of April, 1972.

PLAN OF SUBDIVISION OF
PART OF DISTRICT LOT 1427,
CARIBOO DISTRICT.

SCALE: 1" = 50'

Registrar
Per: J. Schaeley
(Surveyor L.R.O.)



Bearings are astronomic derived from N. Adys. Plans
18712 & 19429 shown as N. 57° 30' E.

- P. Con. Standard Concrete Post.
- P.P. Standard Pipe Post.
- I.P. Standard Iron Post.
- C.I.P. Standard Iron Post Capped.
- Denoting "Old"
- Wt. Denoting "Witness"

I V. Bartell of the City of Prince George,
British Columbia Land Surveyor make oath and
say that I was present at and did personally
superintend the survey represented by this plan
and that the survey and plan are correct.
The said survey was completed on the
15th day of March, 1972

V. Bartell
V. Bartell, B.C.L.S.

Approved under the Land Registry Act
this 11th day of April, 1972.

C.E. Olat
Approving Officer

Sworn before me at Prince George B.C.
this 22nd day of March, 1972.

[Signature]
Commissioner for taking affidavits for
British Columbia.

This plan lies within the Fraser Fort - George
Regional District.

Owner *[Signature]*

Witness *[Signature]*

McWILLIAM, WHYTE, GOBLE, & ASSOCIATES,
B.C. LAND SURVEYORS,
PRINCE GEORGE — KAMLOOPS — SMITHERS.

REF. NO. 71017-C.