

Map No. 2002.

Deposited August 18th 1925.

G. A. Stokel
Registrar.

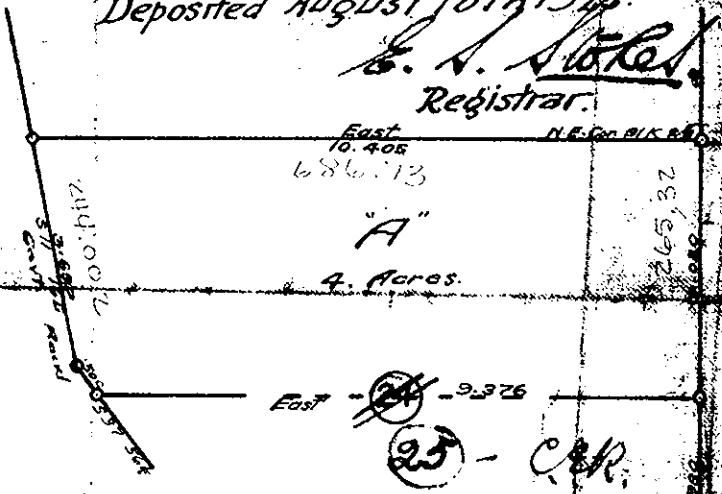
Approved by the Land
Registry Act.

G. P. Chapman

Dist. Public Works L. 191100

Victoria, B.C. 11th June 1925

Witness *Prof. Mayhew*



SUBDIVISION PLAN.

PART OF BLOCK 25, REGISTERED PLAN NO 1454.

(LOT 3050)

CARIBOO DIST.

B.C.

SCALE: 3 CHAINS TO 1 INCH.

I, F. C. Burden, a British Columbia Land Surveyor, make oath and say that I was present at and did personally superintend the survey represented by this plan, and that the survey and plan are correct. The said survey was completed on the 5th day of [illegible]

F. C. Burden
B.C.L.S.

J. S. Heaver
Notary Public

Note: Bearings derived from the West Boundary L. 3050.
All angles marked on ground by durable wood posts.

Inspected May 29th 1925

F. C. Burden
B.C.L.S.

John L. McAuley

Witness

Charles E. Rediker