

PLAN No 20009  
Deposited in the Land Registry  
Office at Prince George, B.C. this  
29 day of March, 1972.

PLAN OF SUBDIVISION OF  
LOTS 24, 25, 26, 27 & 28 & CLOSED LANE, PLAN 1268 &  
PARCELS A AND B - PLAN 6295  
**BLOCK 30 - DISTRICT LOT 343**  
CARIBOO DISTRICT - BRITISH COLUMBIA

SCALE: 1" = 50'

NOTE: Bearings are astronomic, derived from the  
South Boundary of First Avenue, Plan 1268.

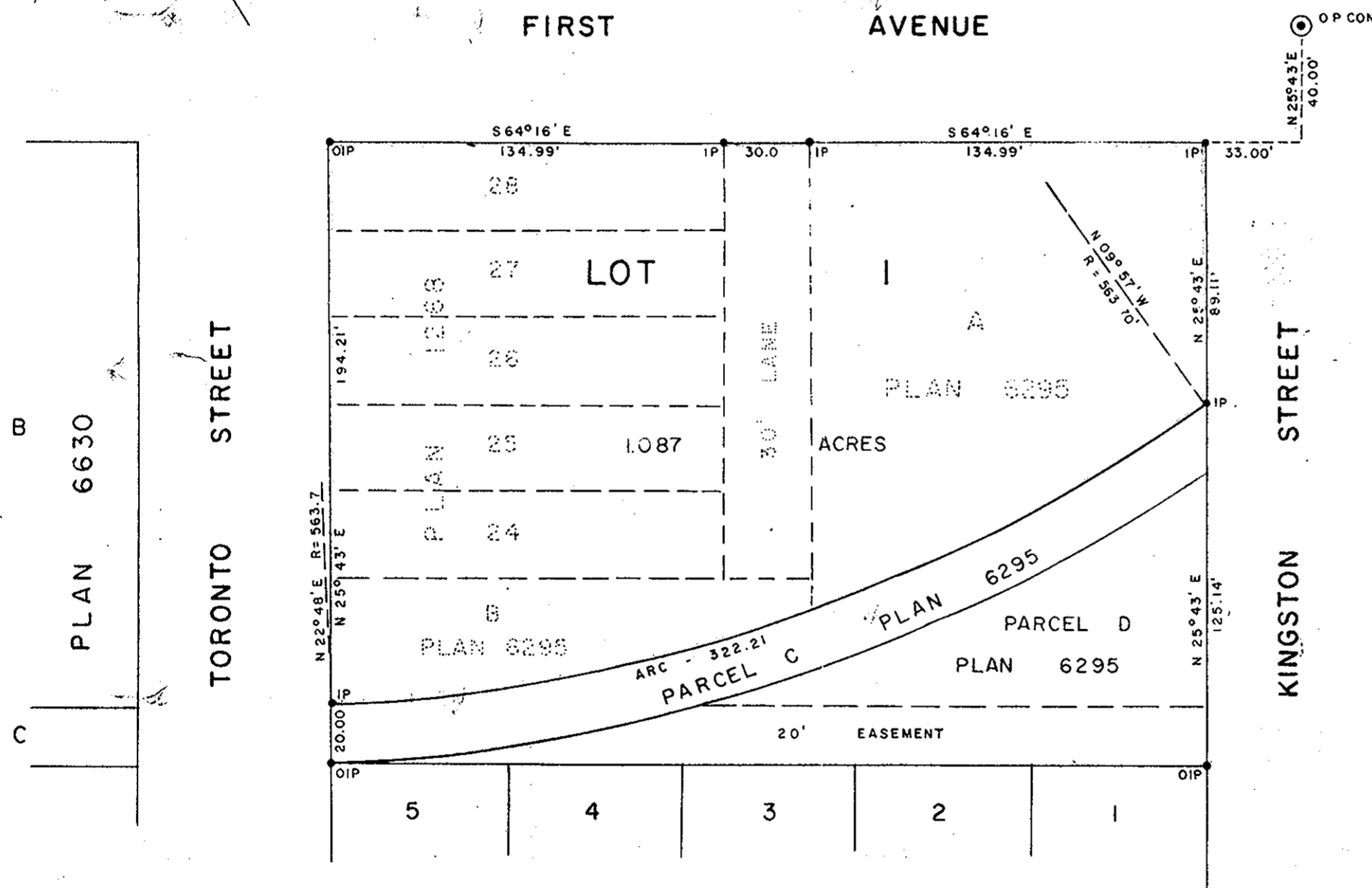
LEGEND: • OIP denotes an old iron pin found.  
• IP denotes an iron pin placed on this survey.  
⊙ OP CON denotes an old concrete monument found.

E. T. SCHODLEY  
Registrar  
PER: J. Finlayson  
(SURVEYOR L.R.O.)

**RECEIVED**

JUN 6 1972

CITY ASSESSOR  
PRINCE GEORGE



I, DONALD A. DUFFY, of the City of Prince George,  
a British Columbia Land Surveyor, make oath and say  
that I was present at and did personally superintend  
the survey represented by this plan and that the  
survey and plan are correct. The said survey was  
completed on the 21st day of May, 1965.

Sworn before me this 4  
day of JUNE, 1965.

A Commissioner for taking Affidavits  
within the Province of British Columbia

Owner  
Prince George Brewing Co.  
PRINCE GEORGE BREWING CO. LTD.  
Witness

Approved under the Land Registry Act  
this 13th day of MARCH, 1972.

Approving Officer, City of Prince George.

W.D. USHER & ASSOCIATES  
LAND SURVEYORS  
PRINCE GEORGE, B.C.  
K 69 & 72 1590