

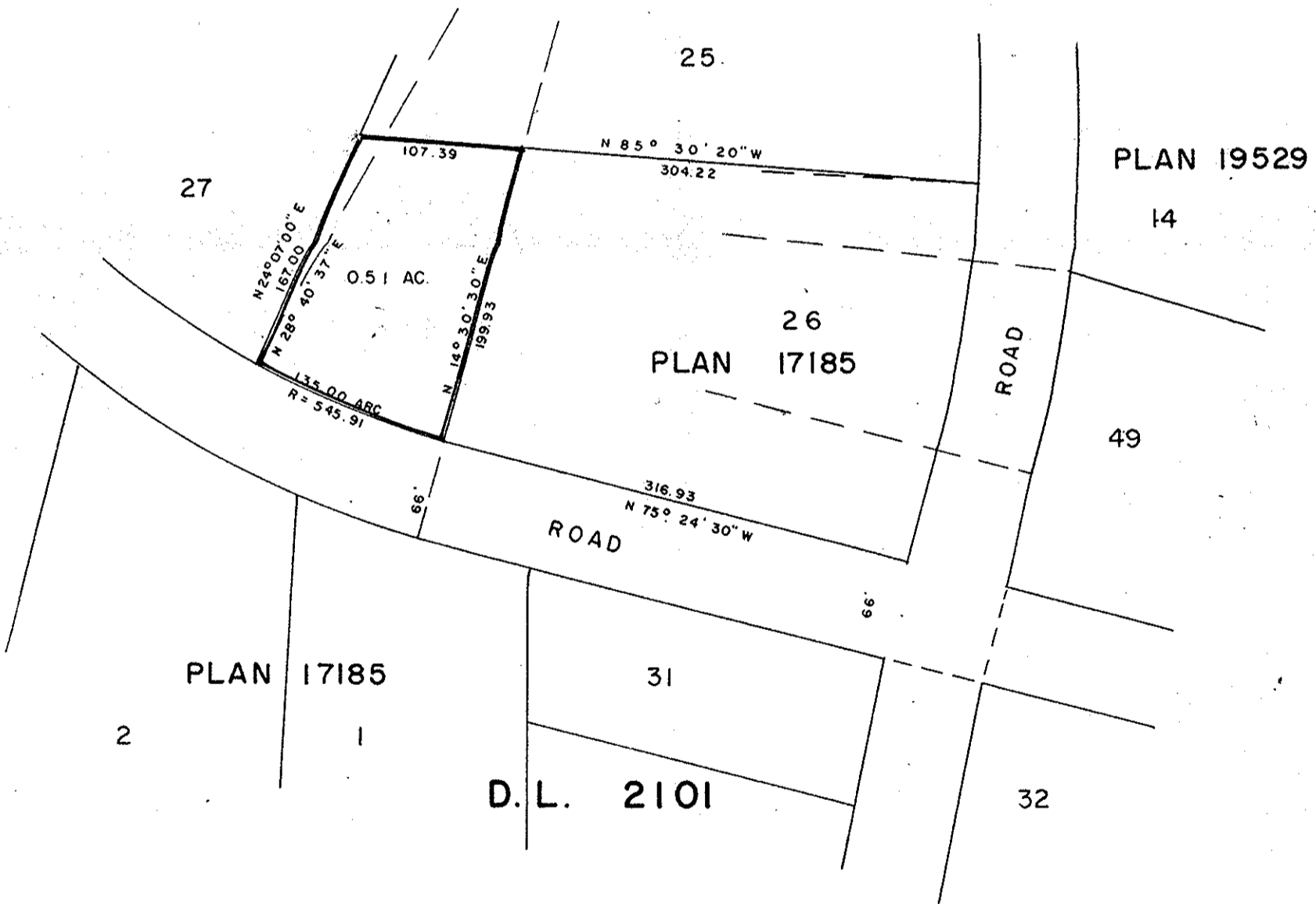
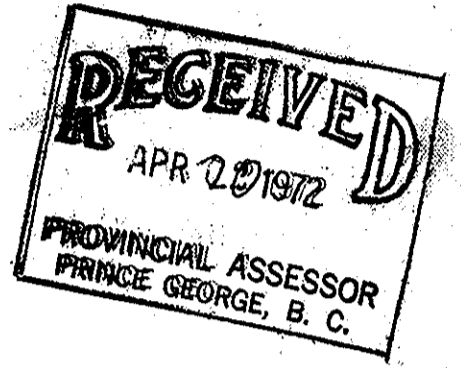
EXPLANATORY PLAN OF PART OF
 LOT 26, PLAN 17185
 DISTRICT LOT 2101
 CARIBOO DISTRICT

SCALE: 1" = 100'

PLAN N^o 19999

Deposited in the Land Registry
 Office at Prince George, B.C. this
 24 day of MARCH, 1972

F. J. SCHOLEY
 Registrar



CERTIFIED CORRECT

This 26th day of January, 1972.
 According to information shown on plans of
 record in the Prince George Land Registry
 Office

[Signature]
 D.A. DUFFY, B.C.L.S.

Approved under the Land Registry Act
 this 8 day of MARCH, 1972.

[Signature]
 Approving Officer, Dept. of Highways

This plan lies within the Fraser-Fort
 George Regional District.

W. D. USHER & ASSOCIATES
 LAND SURVEYORS
 PRINCE GEORGE — B.C.