

20185.301 - 307

PLAN OF SUBDIVISION OF PART OF  
E. 1/2 DISTRICT LOT 2101  
CARIBOO DISTRICT, BRITISH COLUMBIA

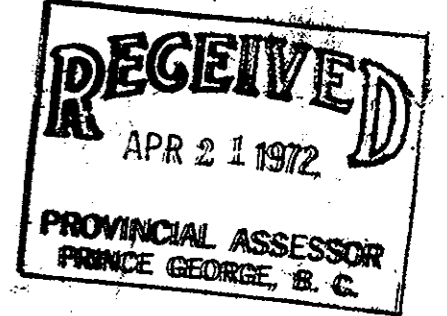
SCALE: 1" = 200'

NOTE: Bearings are astronomic, derived from the West boundary  
of the E. 1/2 of D.L. 2101 as shown on Plan 19954

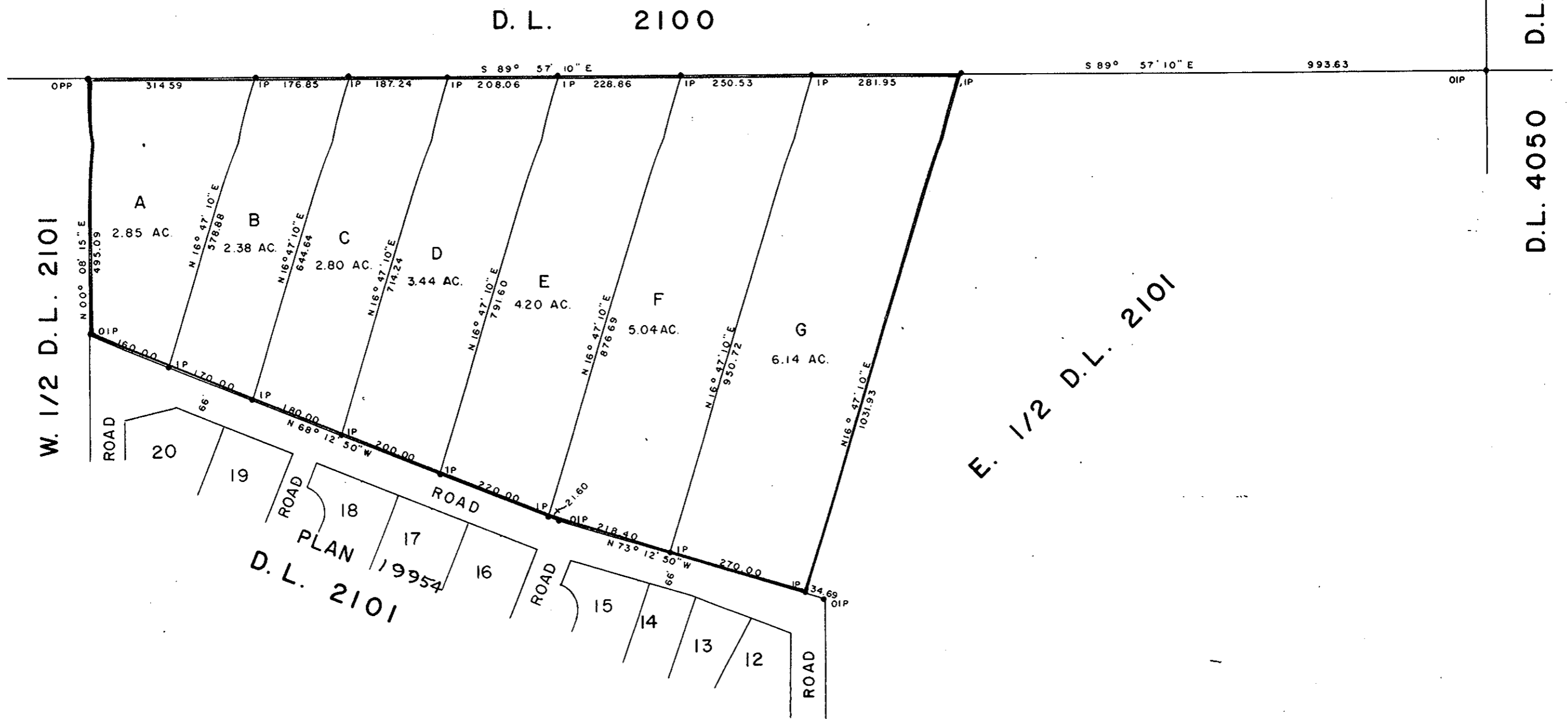
LEGEND: ● OIP denotes an old iron pin found.  
● OPP denotes an old pipe post found.  
● IP denotes an iron pin set.

PLAN N<sup>o</sup> 19954  
Deposited in the Land Registry  
Office at Prince George, B.C. this  
16 day of MARCH, 1972

E. J. SCHOOLEY  
Registrar



Total Acreage 28.85  
RS 4/24/72



COMET INVESTMENTS LTD.

JERGIN ENTERPRISES LTD.

I, DONALD A. DUFFY of the City of Prince George,  
a British Columbia Land Surveyor, make oath and say  
that I was present at and did personally superintend  
the survey represented by this plan and that the survey  
and plan are correct. The said survey was completed  
on the 11TH day of SEPT. 1971

Approved under the Land Registry Act  
this 7 day of MARCH, 1972

PG REALTY & INSURANCE AGENCY LTD.

FORT ENTERPRISES LTD.

*[Signature]*  
Approving Officer, Dept. of Highways.

Sworn before me this 26  
day of JAN, 1972

This plan lies within the Fraser-Fort George  
Regional District.

*[Signature]*  
A Commissioner for taking Affidavits  
for British Columbia.