

PLAN No 19978

Deposited in the Land Registry Office  
at Prince George on the 16 day of MARCH 1972

# PLAN OF SUBDIVISION OF PART OF DISTRICT LOT 1427 CARIBOO DISTRICT

RECEIVED

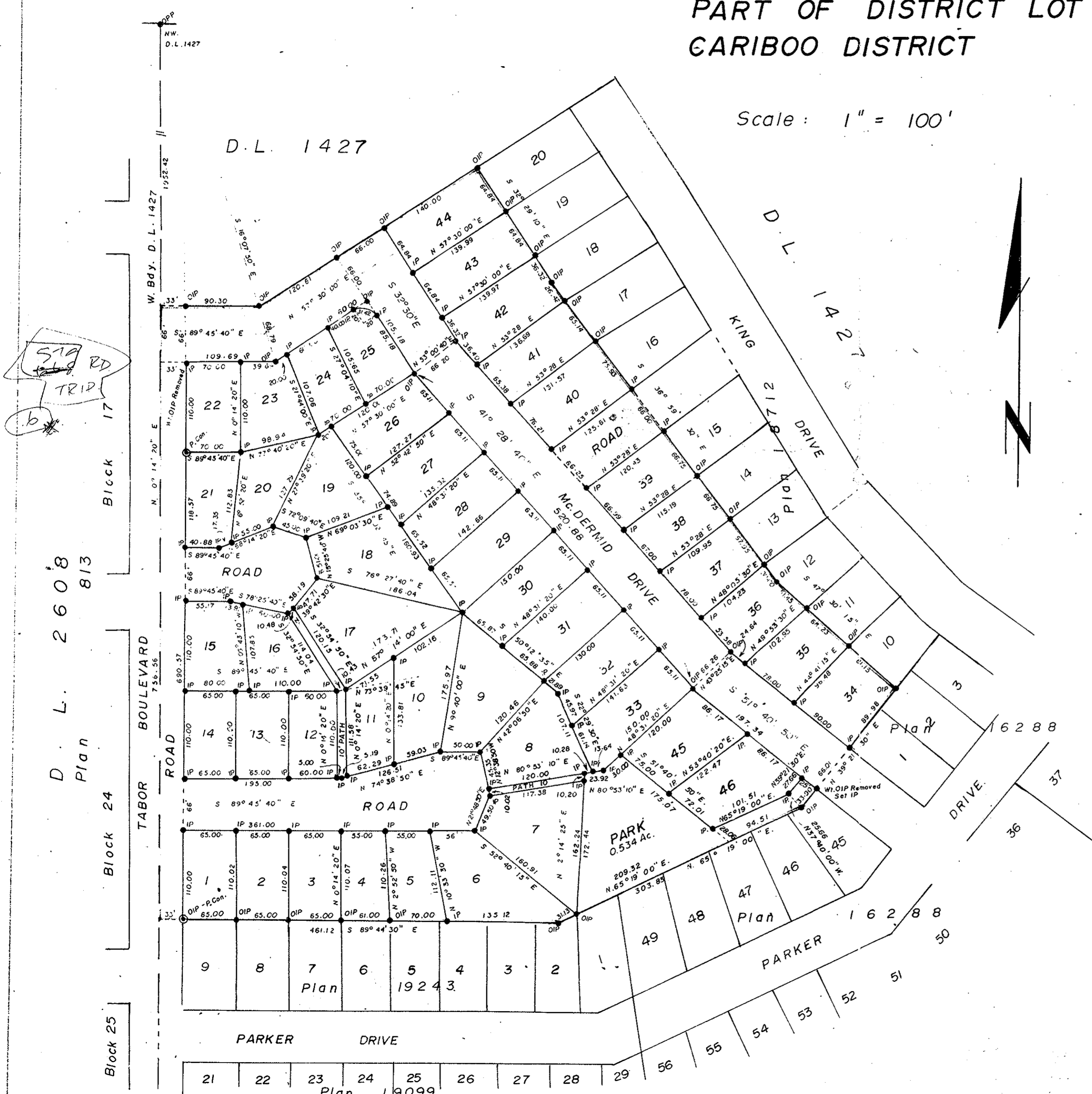
MAY 19 1972

CITY ASSESSOR  
PRINCE GEORGE

E. T. SCHOOLEY  
Registrar

PER: *[Signature]*  
(SURVEYOR L.R.O.)

Scale: 1" = 100'



Area within red outline - 13.312 Ac.

Bearings are astronomic and are derived from  
West Boundary of D.L. 1427 - shown as  
N 0° 14' 20" E on Plan 19243.

- P.con Standard Concrete Post
- P.Rock Standard Rock Post
- P.P Standard Pipe Post
- I.P Standard Iron Post
- P Wooden Post
- L.P Lead Plug
- Denoting "Old"
- WT Denoting "Witness"
- CIP Capped Iron Post

I, V. BARTELL of the City of Prince George  
Public Works and Land Surveyor, make oath and  
swear that I am present at and did personally  
conduct the survey represented by this  
plan and that the survey and plan are correct.  
The said survey was completed on  
the 15 day of February, 1972.

*Victor Bartell*

Sworn before me at Prince George  
this 15 day of February 1972.

*[Signature]*  
A Commissioner for taking affidavits  
for British Columbia.

Approved under the Land Registry Act  
on the 21<sup>st</sup> day of FEB 1972

*C. E. Olat*  
Approving Officer

Owner McHARRIS RESOURCES LTD

THIS PLAN LIES WITHIN THE  
FRASER FORT GEORGE  
REGIONAL DISTRICT

Ventures Sawmills Limited

McWilliam-Whyte-Goble & Associates  
B.C. LAND SURVEYORS  
PRINCE GEORGE/SMITHERS/KAMLOOPS  
REF No: 71017-B