

SUBDIVISION PLAN

PLAN No: 19932

Deposited in the Land Registry Office
at Prince George on the ... Day of ... 1971

PREPARED PURSUANT TO RE-PLOTTING
PROVISIONS OF THE MUNICIPAL ACT OF
PARCEL SHOWN OUTLINED IN RED ON
REFERENCE PLAN.

Registrar

Lots 1, 2, 3, Remainder of Lots 4 & 5
and Parcel "A" (D.D.B - 11082)

PLAN 7787.

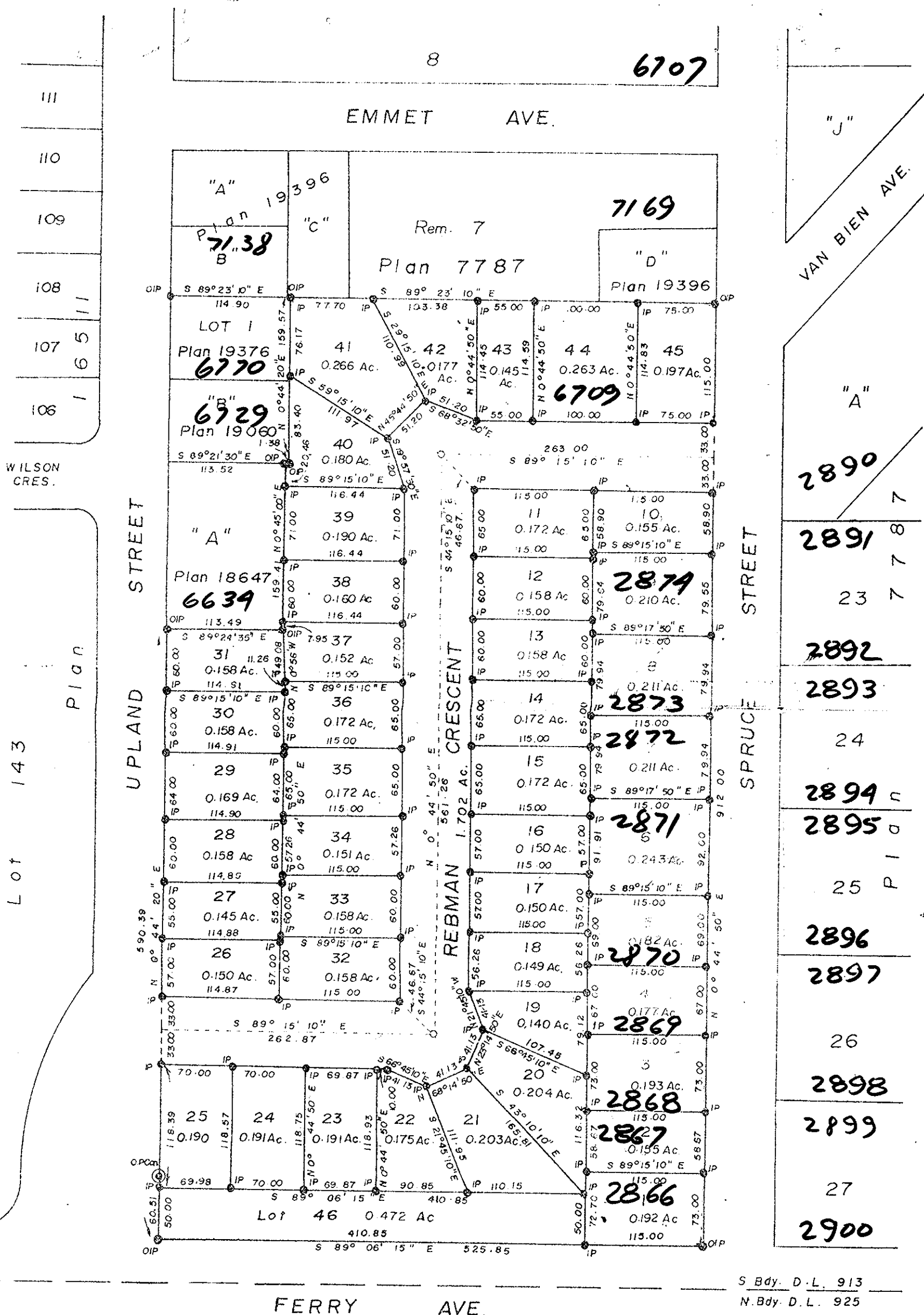
Lot 2, PLAN 19376

and Part of Van Bien Avenue contained therein

ALL IN D.L. 913

CARIBOO DISTRICT

Scale: 1" = 100'



Bearings are astronomic and are derived from OIP's on N.W. Corner
of Lot 1, Plan 19376 and S.W. Corner Lot 1, Plan 7787.

- I.P. Standard Iron Post.
- P.Con. Standard Concrete Post.
- Denoting "Old"

Approved under the Land Registry Act
on the 12th day of JAN. 1972

E. E. Stout
Approving Officer
City of Prince George

I, A. DANILUCK of the City of Prince George, British Columbia
Land Surveyor, make oath and say that I was present at and did
personally superintend the survey represented by this plan
and that the survey and plan are correct.

The said survey was completed on the 7th day of January, 1972.

A. Daniluck
A. DANILUCK, B.C.L.S.

Sworn before me at Prince George
this 11 day of January 1972

J. L. Wilson
A commissioner for taking affidavits
for British Columbia

The Seal of the City of Prince George
was affixed here to in Presence of

Mayor *H. Moffat*
City Clerk *C. Russell*

S. Bdy. D.L. 913
N. Bdy. D.L. 925

THE PLAN LIES WITHIN
THE FRASER FORT GEORGE
REGIONAL DISTRICT

Mc. WILLIAM, WHYTE, GOBLE & ASSOCIATES
B.C. LAND SURVEYORS
PRINCE GEORGE, KAMLOOPS, SMITHERS.

REF. No.: 71100 - 21C

Lot 2	Plan	16674
D.L.		925

Lot 1
