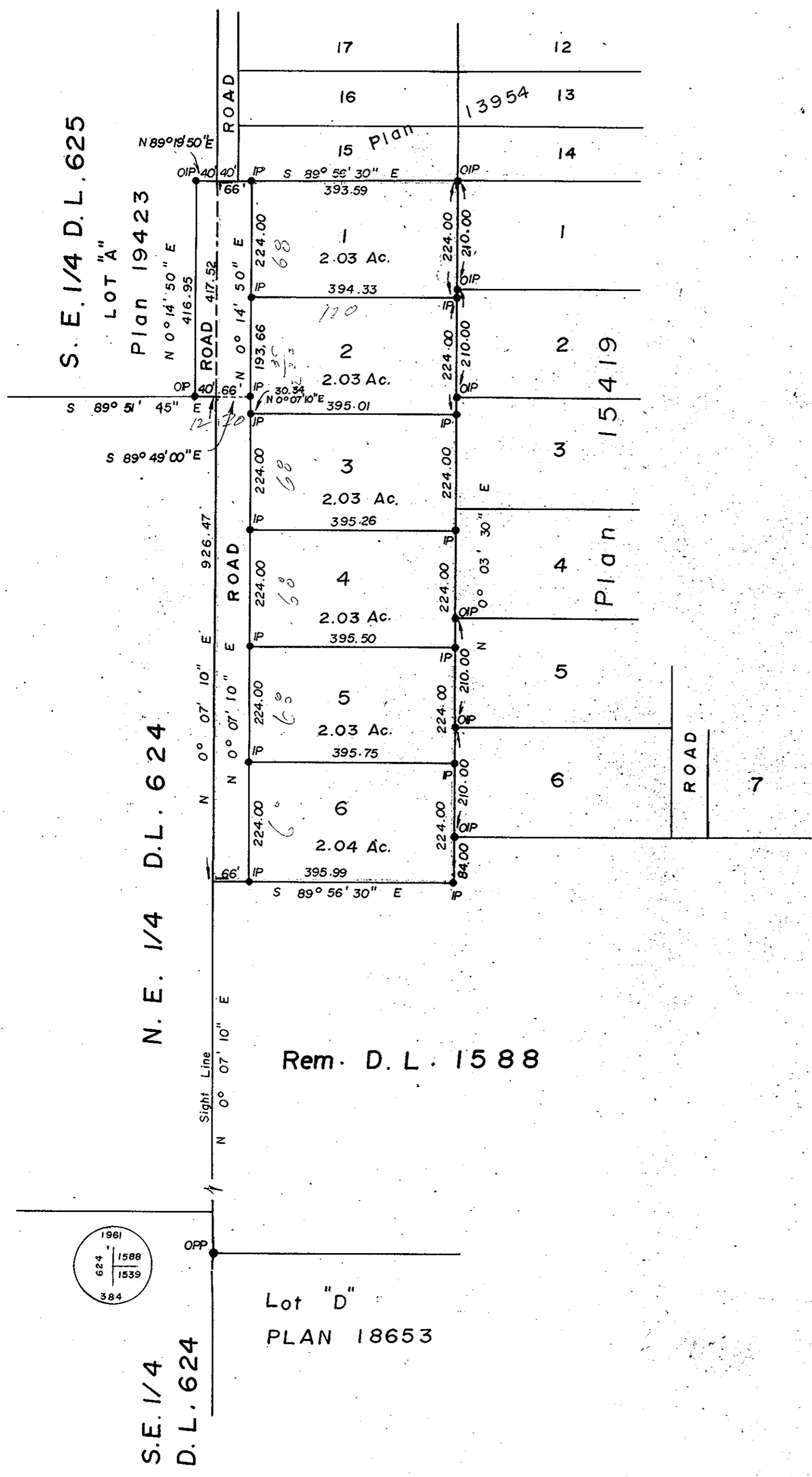


PLOTTED (DA)(EA) 500's

PLAN NO: 19883
DEPOSITED IN THE LAND REGISTRY OFFICE AT
PRINCE GEORGE THIS 18th DAY OF JANUARY 1972

[Signature]
DEPUTY REGISTRAR



SUBDIVISION PLAN OF
PART OF DISTRICT LOT 1588
EXCEPT PLAN 13954, PLAN 15419,
AND R/W PLAN H-705
CARIBOO DISTRICT

Scale: 1" = 200'

THIS PLAN LIES WITHIN THE FRASER
FORT GEORGE REGIONAL DISTRICT.

APPROVED UNDER THE LAND REGISTRY ACT
THIS 11th DAY OF January 1972

[Signature]
APPROVING OFFICER

[Signature]
OWNER *[Signature]*

WITNESS *[Signature]*

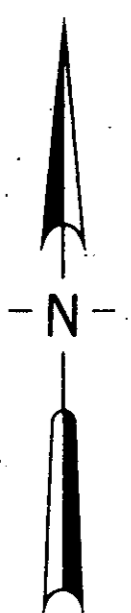
I, A. DANILUCK OF THE CITY OF PRINCE GEORGE, BRITISH COLUMBIA LAND SURVEYOR MAKE OATH AND SAY THAT I WAS PRESENT AT AND DID PERSONALLY SUPERINTEND THE SURVEY REPRESENTED BY THIS PLAN, AND THAT THE SURVEY AND PLAN ARE CORRECT. THE SAID SURVEY WAS COMPLETED ON THE 24th DAY OF November 1971.

[Signature]
A. DANILUCK B.C.L.S.

SWORN BEFORE ME AT PRINCE GEORGE
THIS 7th DAY OF December 1971

[Signature]
A COMMISSIONER FOR TAKING AFFIDAVITS
FOR BRITISH COLUMBIA

- P Con ... STANDARD CONCRETE POST
- PP ... STANDARD PIPE POST
- C.I.P. ... STANDARD CAPPED IRON POST
- I.P. ... STANDARD IRON POST
- B.T. ... BEARING TREE
- O. ... DENOTING 'OLD'



McWILLIAM - WHYTE - GOBLE & ASSOCIATES
B.C. LAND SURVEYORS
KAMLOOPS - SMITHERS - PRINCE GEORGE
REF. NO.: 71109