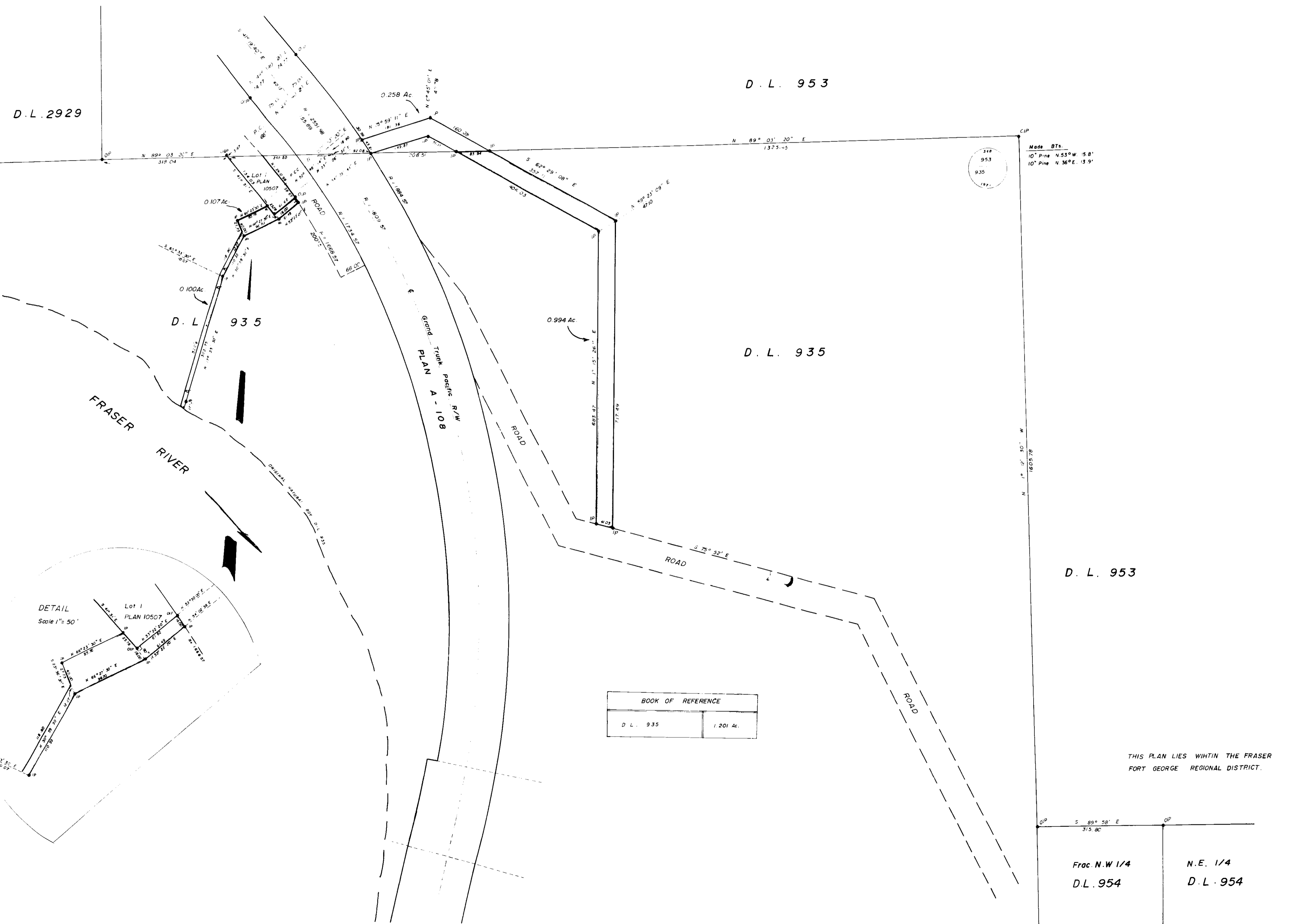


PLAN No. 19881
 Deposited in the Land Registry Office
 at Prince George on the 15th day of January 1972

[Signature]
 Deputy Registrar



BLACKBURN IMPROVEMENT DISTRICT

**PLAN OF RIGHT OF WAY
 IN D.L. 935
 CARIBOO DISTRICT**

SCALE : 1" = 100'

LEGEND

BEARINGS ARE ASTRONOMIC, DERIVED FROM NORTH BOUNDARY OF D.L. 954 SHOWN AS $S 89^{\circ} 58' E$, PLAN 15474.

- CIP Standard Iron Post Found
- IP Standard Iron Post Set
- CIP Capped Iron Post Set

I, V. BARTELL of the City of Prince George British Columbia Land Surveyor, make oath and say that I was present and did personally superintend the survey represented by this plan and that the survey and plan are correct.

The said survey was completed on the 4th day of JUNE 1971.

[Signature]
 V. Bartell B.C.L.S.

Sworn before me at Prince George this 17th day of January 1972.

[Signature]
 A Commissioner for taking affidavits for British Columbia

THIS PLAN LIES WITHIN THE FRASER FORT GEORGE REGIONAL DISTRICT.

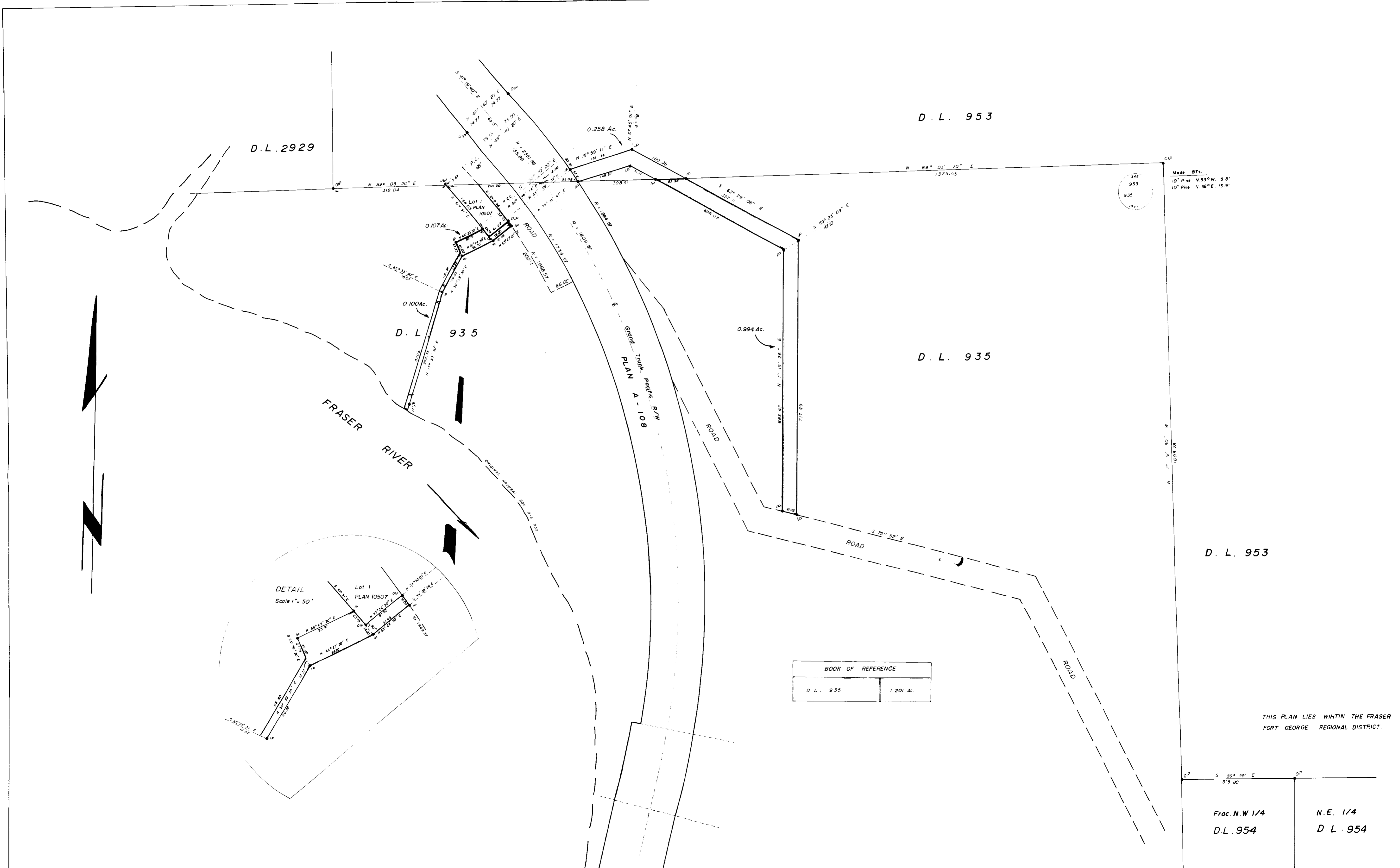
318.04
 $S 89^{\circ} 58' E$

Frac. N.W 1/4
 D.L. 954

N.E. 1/4
 D.L. 954

McWILLIAM -WHYTE -GOBLE & ASSOCIATES
 B.C. LAND SURVEYORS
 PRINCE GEORGE - SMITHERS - KAMLOOPS

Ref No: 71002



D.L. 2929

D.L. 953

D.L. 935

D.L. 935

D.L. 953

DETAIL
Scale 1" = 50'

Lot 1
PLAN 10507

BOOK OF REFERENCE	
D.L. 935	1 201 Ac.

THIS PLAN LIES WITHIN THE FRASER FORT GEORGE REGIONAL DISTRICT.

<p>01P 5 89° 03' 20" E 318.04</p> <p>Frac. N.W 1/4 D.L. 954</p>	<p>01P 5 89° 03' 20" E 1325.45</p> <p>N.E. 1/4 D.L. 954</p>
---	---

344
953
935
142

Made B.Ts.
10" Pine N. 53° W. 58'
10" Pine N. 36° E. 13.9'

N 1° 12' 30" W
1605.78

