

PLAN OF SUBDIVISION OF
PARCEL A, PLAN 18815

DISTRICT LOT 343
CARIBOO DISTRICT, BRITISH COLUMBIA

SCALE: 1" = 20'

NOTE: Bearings are astronomic, derived from the
East boundary of Parcel A, Plan 18815.

LEGEND: • OIP denotes an old iron pin found.
• IP denotes an iron pin set.

RECEIVED

FEB 16 1972

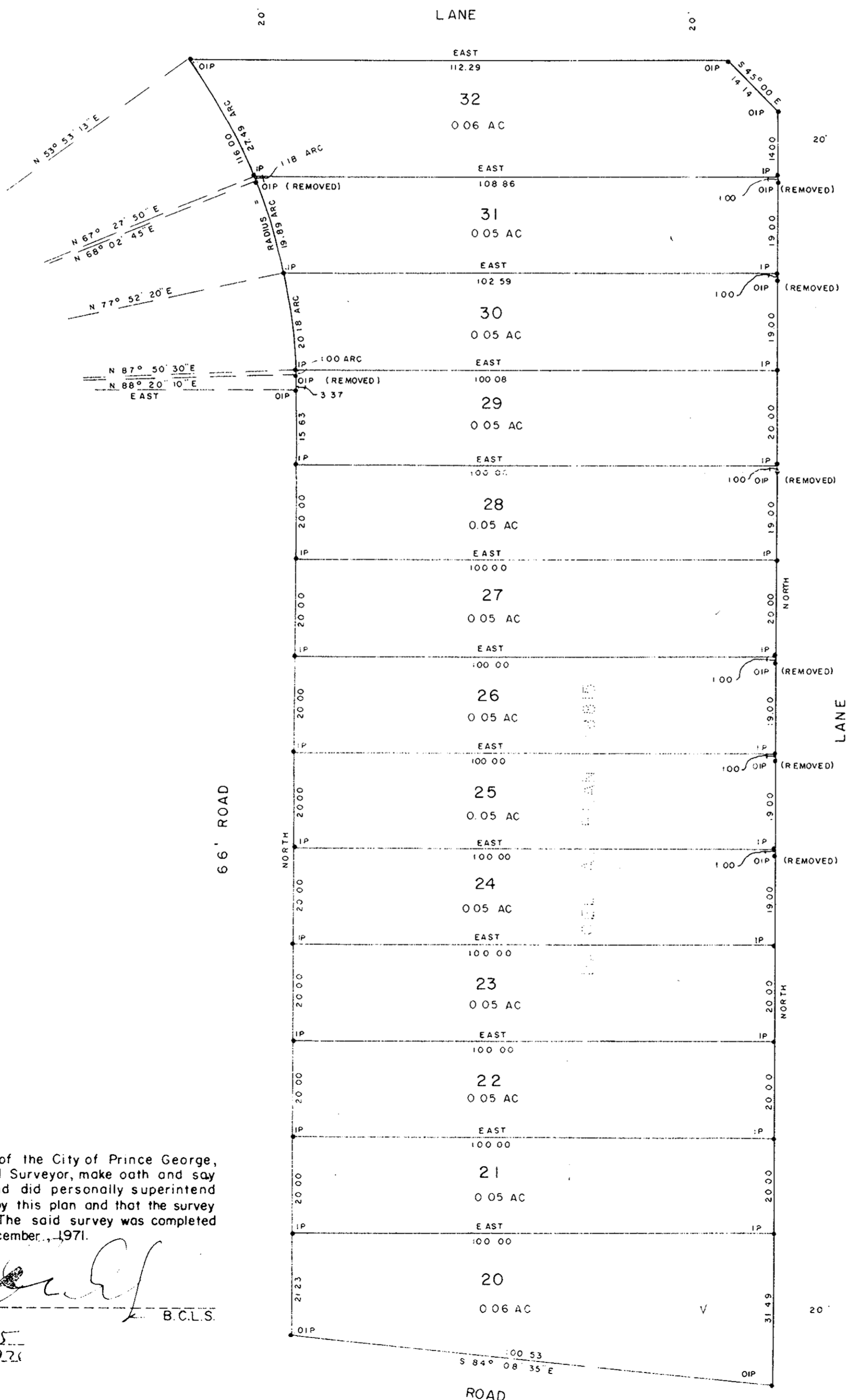
CITY ASSESSOR
PRINCE GEORGE

PLAN No 19876

Deposited in the Land Registry
Office at Prince George, B.C. this
10th day of JANUARY, 1972.

Deputy Registrar

19
PLAN 18815 D.L. 343



I, DONALD A. DUFFY of the City of Prince George,
a British Columbia Land Surveyor, make oath and say
that I was present at and did personally superintend
the survey represented by this plan and that the survey
and plan are correct. The said survey was completed
on the 7th day of December, 1971.

[Signature]
B.C.L.S.

Sworn before me this 15th
day of DEC, 1971

[Signature]
A Commissioner for taking Affidavits
for British Columbia.

LOT 6, PLAN 18815 - D.L. 343

City of Prince George
[Signature]
Deputy Registrar

MULTI BUILDERS LTD

Approved under the Land Registry Act
this 15th day of DEC, 1971.

[Signature]
Approving Officer, City of Prince George

This plan lies within the Fraser-Fort George
Regional District.