

PLAN OF SUBDIVISION OF PART OF
N.E. 1/4 DISTRICT LOT 4047
CARIBOO DISTRICT, BRITISH COLUMBIA

PLOTTED (HU)

SCALE: 1" = 100'

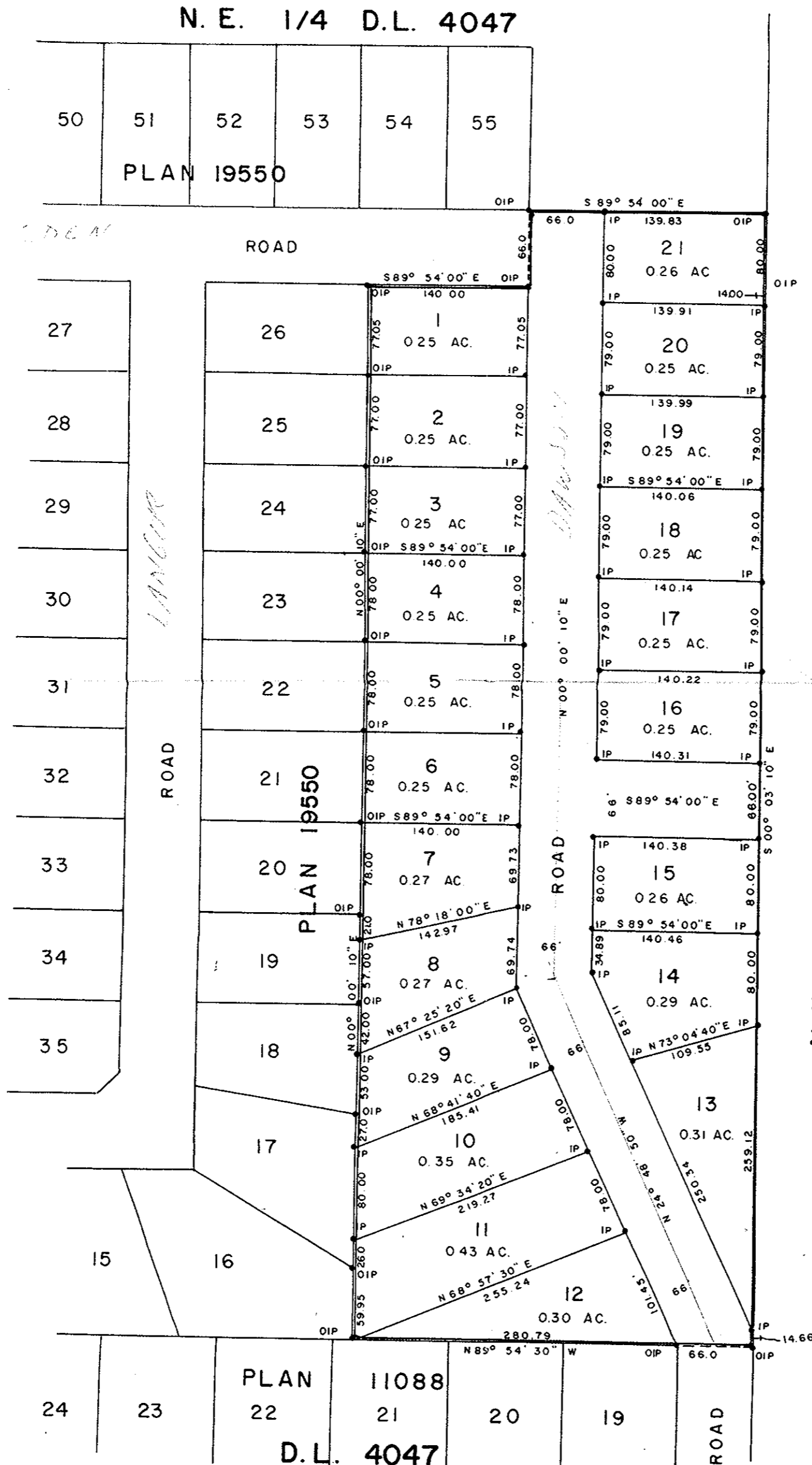
PLAN No 19871

NOTE: Bearings are astronomic, derived from the East boundary of Lots 16 to 26, Plan 19550.

Deposited in the Land Registry Office at Prince George, B.C. this 23rd day of DECEMBER, 1971.

LEGEND: • OIP denotes an old iron pin found.
• IP denotes an iron pin set.

DEPUTY REGISTRAR E. J. RAVEN



N.W. 1/4 D.L. 4028

MORTGAGEE
CENTRAL WHOLESALE
IMPORTING CO. LTD.

H. E. Hellner
President

RECEIVED

JAN 21 1972

REGISTRY IMPROVEMENT DISTRICT

I, DONALD A. DUFFY of the City of Prince George, a British Columbia Land Surveyor, make oath and say that I was present at and did personally superintend the survey represented by this plan and that the survey and plan are correct. The said survey was completed on the 17th day of SEPT. 1971.

Donald A. Duffy
B.C.L.S.

Sworn before me this 15th day of DECEMBER, 1971

[Signature]
A Commissioner for taking Affidavits for British Columbia.

GLENVIEW ESTATES LTD.

[Signature]
President

Approved under the Land Registry Act this 23rd day of DECEMBER, 1971

[Signature]
Approving Officer, Dept. of Highways.

This plan lies within the Fraser-Fort George Regional District.

W. D. USHER & ASSOCIATES
LAND SURVEYORS
PRINCE GEORGE - B.C.
DZ 66 3069C