

PLAN NO: 19870

DEPOSITED IN THE LAND REGISTRY OFFICE AT PRINCE GEORGE THIS 23RD DAY OF DECEMBER 1971

PLAN OF SUBDIVISION OF LOTS 20 - 24 INCLUSIVE, BLOCK 5, PLAN 646; AND N. 1/2 CLOSED 11th AVENUE ADJOINING LOT 24, BLOCK 5, PLAN 646, D.L. 1429 CARIBOO DISTRICT

DEPUTY REGISTRAR

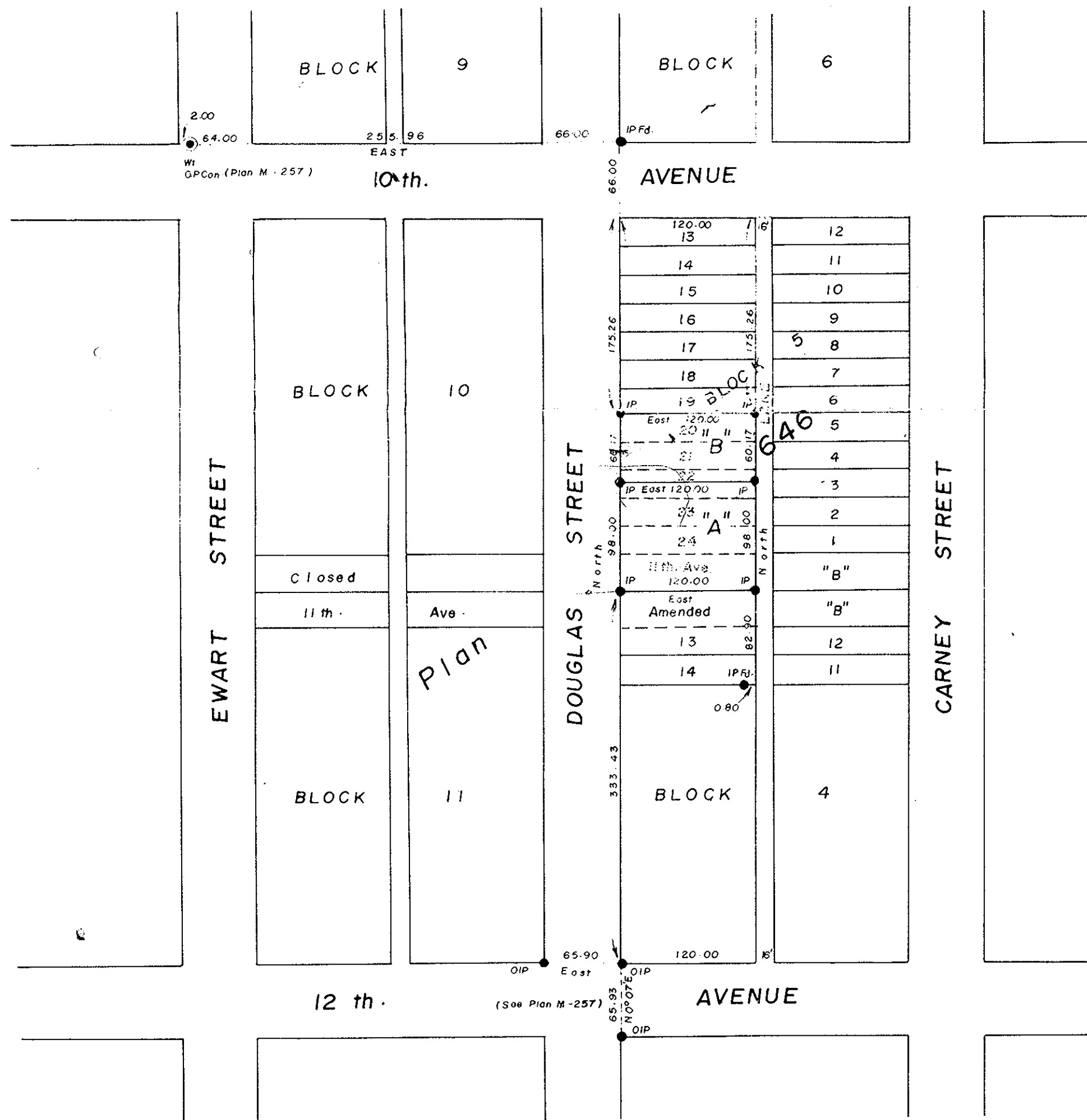
RECEIVED

MAR 20 1972

CITY ASSESSOR PRINCE GEORGE

Copy & Records Over 20/22 N.J.

Scale: 1" = 100'



I, V. BARTELL, OF THE CITY OF PRINCE GEORGE BRITISH COLUMBIA LAND SURVEYOR MAKE OATH AND SAY THAT I WAS PRESENT AT AND DID PERSONALLY SUPERINTEND THE SURVEY REPRESENTED BY THIS PLAN, AND THAT THE SURVEY AND PLAN ARE CORRECT. THE SAID SURVEY WAS COMPLETED ON THE 11th DAY OF October, 1971

BEARINGS ARE ASTRONOMIC AND ARE DERIVED FROM OIP'S FOUND ALONG EAST BOUNDARY OF DOUGLAS STREET SHOWN AS NORTH ON PLAN M-257.

APPROVED UNDER THE LAND REGISTRY ACT THIS 25th DAY OF OCT. 1971

V. BARTELL B.C.L.S.

APPROVING OFFICER

- IP Co. STANDARD CONCRETE POST
● IP STANDARD IRON POST
● IP STANDARD CAPPED IRON POST
● IP STANDARD IRON POST
● BT BEARING TREE
● T TENDING TREE

SWORN BEFORE ME AT PRINCE GEORGE THIS 18th DAY OF October, 1971.

OWNER Aldman

THIS PLAN LIES WITHIN THE FRASER FORT GEORGE REGIONAL DISTRICT.

WITNESS

A COMMISSIONER FOR TAKING AFFIDAVITS FOR BRITISH COLUMBIA

McWILLIAM - WHYTE - GOBLE & ASSOCIATES B.C. LAND SURVEYORS KAMLOOPS - SMITHERS - PRINCE GEORGE

REF. NO.: 71148 - B

