

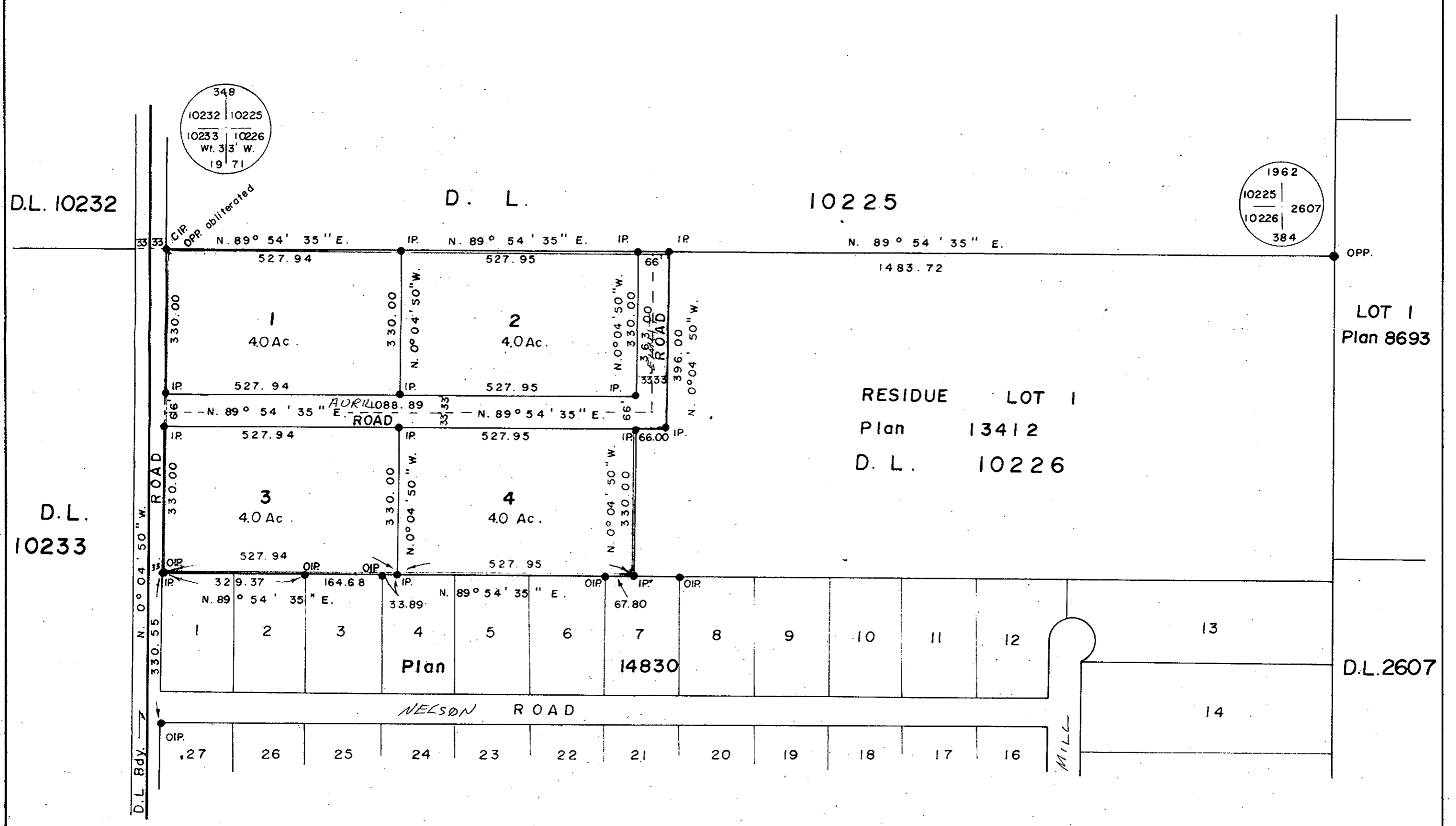
Plotted (FL)

PLAN NO: 19838  
DEPOSITED IN THE LAND REGISTRY OFFICE AT  
PRINCE GEORGE THIS 20th DAY OF DECEMBER 1971

Deputy Registrar *[Signature]*

PLAN OF SUBDIVISION  
OF PART OF LOT 1, PLAN 13412,  
D.L. 10226, CARIBOO DISTRICT.

Scale : 1" = 200'



348  
10232 | 10225  
10233 | 10226  
Wt. 3' 3\"/>

1962  
10225 | 2607  
10226 |  
384

D.L. 10232

D. L.

10225

D.L.

10233

LOT 1  
Plan 8693

RESIDUE LOT 1  
Plan 13412  
D. L. 10226

D.L. 2607

This plan lies within the Fraser  
Fort-George Regional District.

I, V. Bartell, of the City of Prince George  
BRITISH COLUMBIA LAND SURVEYOR MAKE OATH AND SAY  
THAT I WAS PRESENT AT AND DID PERSONALLY SUPERINTEND  
THE SURVEY REPRESENTED BY THIS PLAN, AND THAT THE  
SURVEY AND PLAN ARE CORRECT THE SAID SURVEY WAS  
COMPLETED ON THE 11th DAY OF May 1971

BEARINGS ARE ASTROGNOMIC AND ARE DERIVED FROM  
OIP on NW Corner Lot 27, and OIP NW Corner  
Lot 1, Plan 14830, shown as N. 0° 04' 50\"/>

APPROVED UNDER THE LAND REGISTRY ACT  
THIS 17 DAY OF NOVEMBER 1971

*[Signature]*  
APPROVING OFFICER

*[Signature]*  
N

*[Signature]*  
B.C.L.S.

SWORN BEFORE ME AT Prince George B. C.  
THIS 17 DAY OF May 1971.

*[Signature]*  
A COMMISSIONER FOR TAKING AFFIDAVITS  
FOR BRITISH COLUMBIA

- STANDARD CONCRETE POST
- STANDARD IRON POST
- STANDARD WOODEN POST
- STANDARD BURNED POST
- HEARING TREE
- BENTONITE SEAL

*[Signature]*  
Lawrence Keith Jenden

*[Signature]*

MCWILLIAM - WHYTE - GOBLE & ASSOCIATES  
BC LAND SURVEYORS  
KAMLOOPS - SMITHERS - PRINCE GEORGE  
REF NO: 71036