

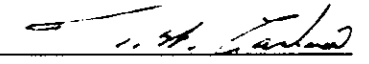
RECEIVED

PLAN 19833

JAN 28 1972

CITY ASSESSOR  
PRINCE GEORGE

Deposited in the Land Registry  
Office at Prince George B.C.  
this 17th day of December 1971.



Registrar

Plan of Subdivision of  
Part of Lot 2 Plan 19210 D.L. 2508  
Cariboo District

Scale: 1 inch ~ 100 Feet

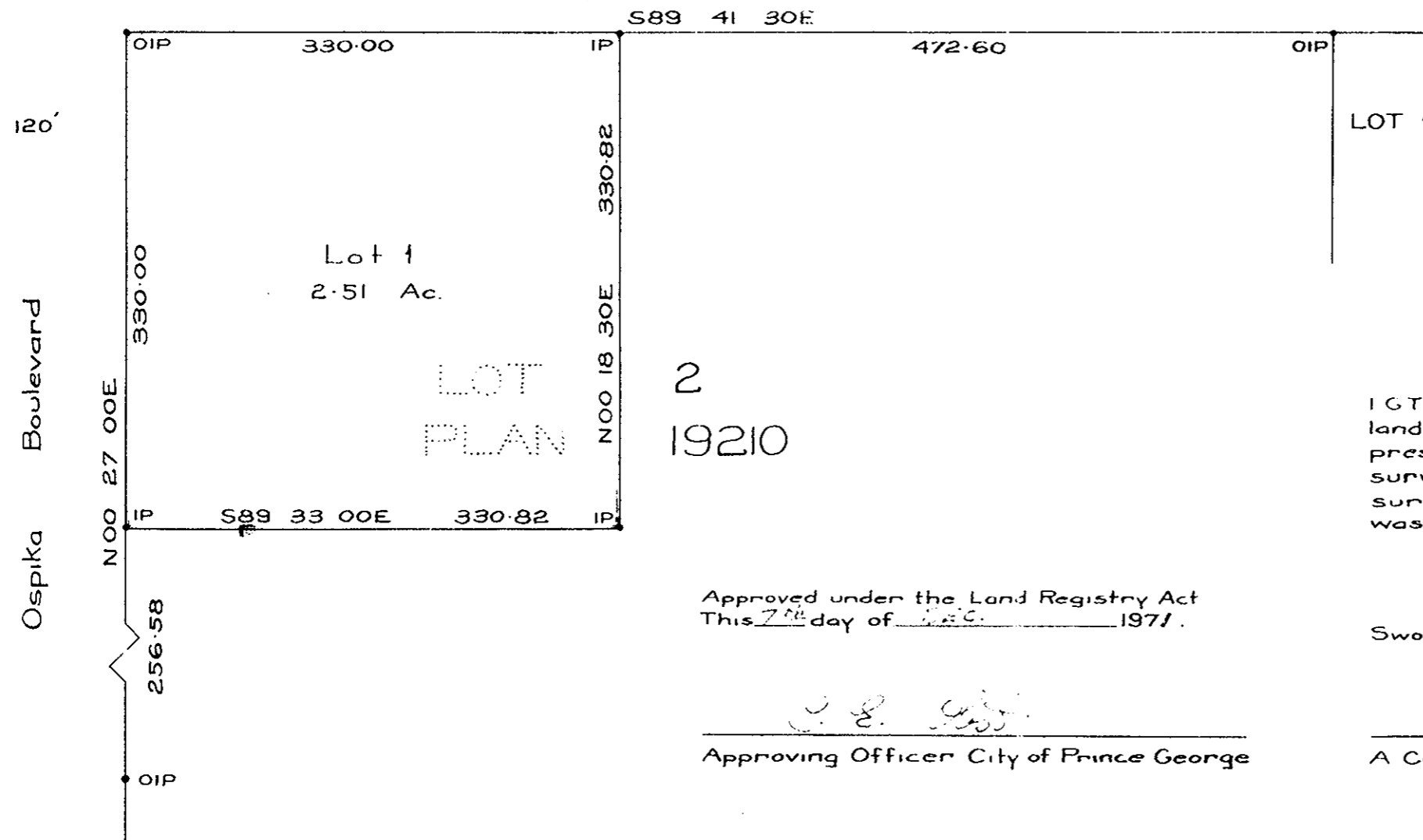
LEGEND

Bearings are astronomic, derived from Plan 19210

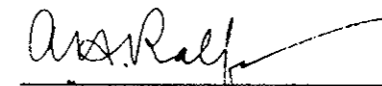
- OIP Denotes standard iron pin found
- IP Denotes standard iron pin set



15th Avenue



I hereby certify that this is a true copy of the  
Official Plan on deposit in the Department of  
Lands, Forests and Water Resources and  
numbered Plan 57 Tube 1022.



Surveyor General, Victoria, B.C.  
Dec. 2, 1971.

I G T Mullin of the city of Victoria, British Columbia  
land surveyor make oath and say that I was  
present at and did personally superintend the  
survey represented by this plan and that the  
survey and plan are correct. The said survey  
was completed on the 22nd day of October, 1971.

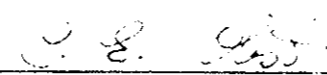


Sworn before me this 17th day of November, 1971.



A Commissioner for taking affidavits for British Columbia

Approved under the Land Registry Act  
This 7th day of Dec. 1971.



Approving Officer City of Prince George