

PLAN OF SUBDIVISION OF PART OF
 LOT II, PLAN 15557
DISTRICT LOT 936
 CARIBOO DISTRICT, BRITISH COLUMBIA

SCALE: 1" = 100'

NOTE: Bearings are astronomic, derived from the South boundary of Lot II.

LEGEND: •OIP denotes an old iron pin found.
 •IP denotes an iron pin set.

RECEIVED

JAN 28 1972

CITY ASSESSOR
 PRINCE GEORGE

PLAN N^o **19765**

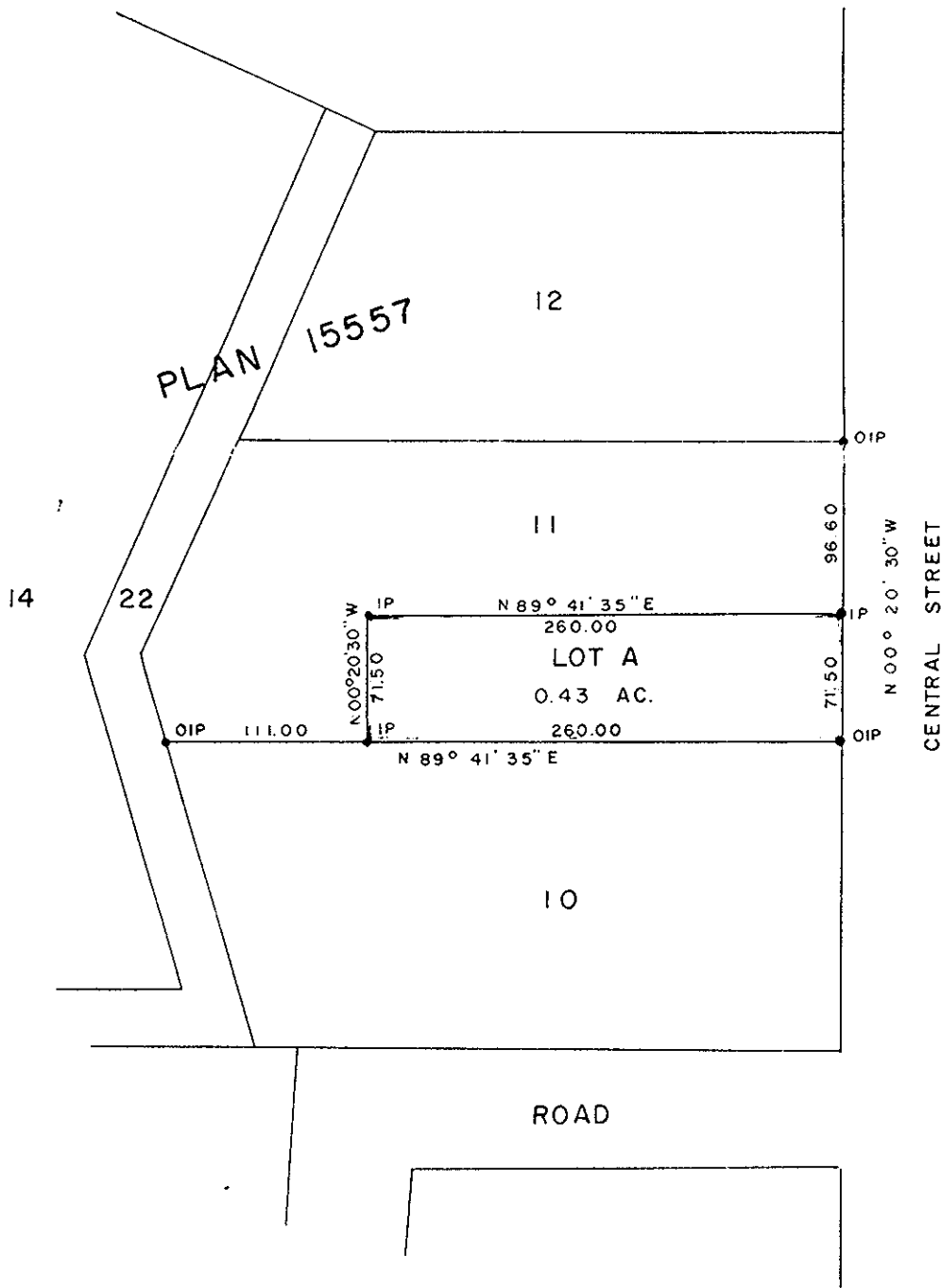
Deposited in the Land Registry
 Office at Prince George, B.C. this
 30th day of **NOVEMBER, 1971**

[Signature]
 Registrar

INDUSTRIAL DEVELOPMENT BANK

[Signature]
 ADMINISTRATIVE ASSISTANT

[Signature]
 DEPUTY SECRETARY



I, DONALD A. DUFFY of the City of Prince George, a British Columbia Land Surveyor, make oath and say that I was present at and did personally superintend the survey represented by this plan and that the survey and plan are correct. The said survey was completed on the 5th day of **OCTOBER, 1971**.

[Signature]
 B.C.L.S.

Sworn before me this 6th
 day of OCTOBER, 1971.

[Signature]
 A Commissioner for taking Affidavits
 for British Columbia

GRAMA'S INN LTD.

[Signature]

Approved under the Land Registry Act
 this 16th day of NOV, 1971.

[Signature]
 Approving Officer, City of Prince George

This plan lies within the Fraser-Fort George
 Regional District.