

PLAN OF SUBDIVISION OF
 LOT A, PLAN 15725
 EXCEPT PLANS 15861, 16456,
 17033 AND 17915
 AND PART OF
S.E. 1/4 DISTRICT LOT 4047
 CARIBOO DISTRICT, BRITISH COLUMBIA

SCALE: 1" = 100'

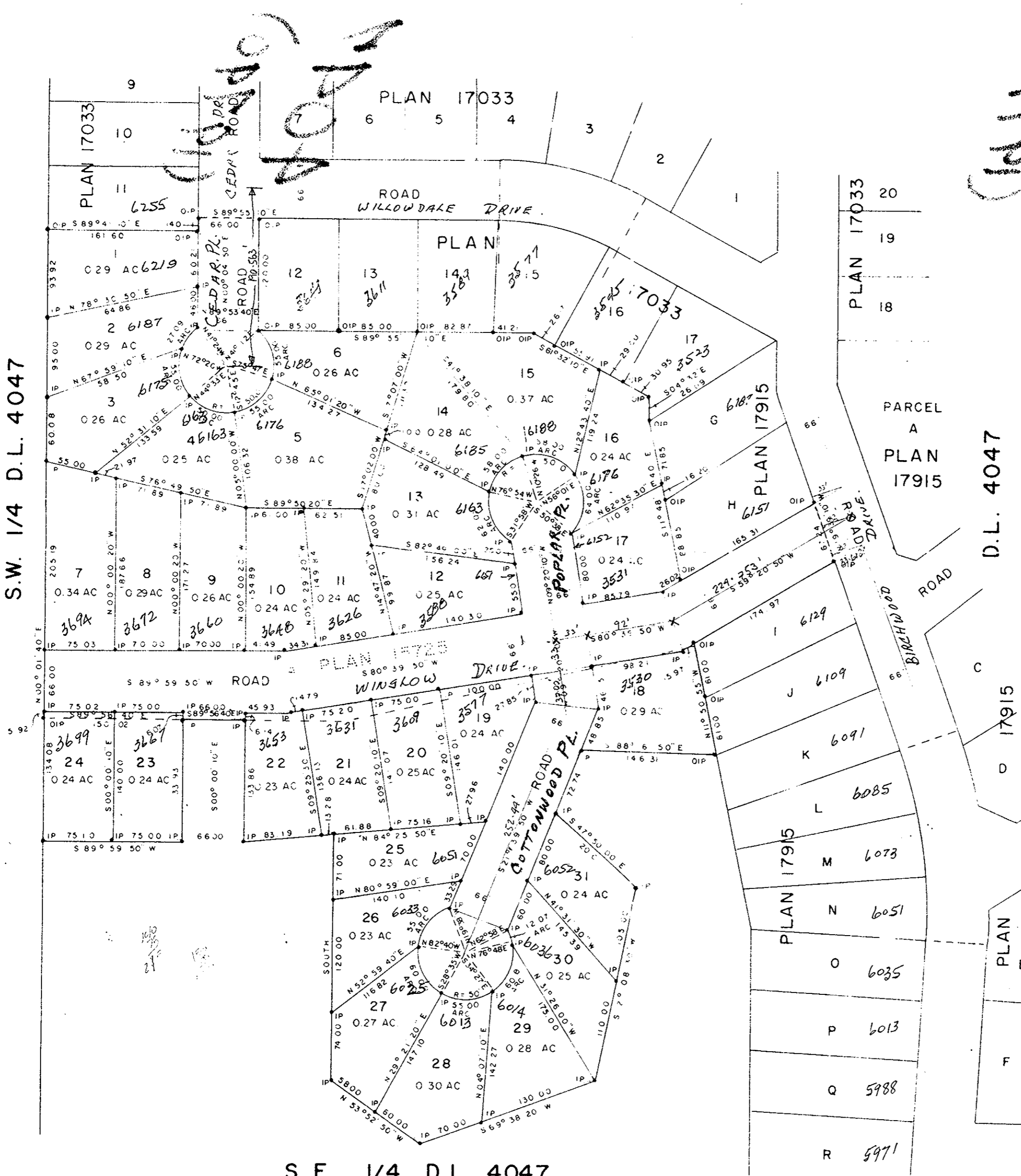
NOTE: Bearings are astronomic, derived from the
 South boundary of Lot H, Plan 17915.

LEGEND: • OIP denotes an old iron pin found.
 • IP denotes an iron pin set.

PLAN No **19740**

Deposited in the Land Registry
 Office at Prince George, B.C. this
23RD day of **NOVEMBER, 1971.**

[Signature]
 DEPUTY Registrar



S. E. 1/4 D.L. 4047

I, DONALD A. DUFFY of the City of Prince George,
 a British Columbia Land Surveyor, make oath and say
 that I was present at and did personally superintend
 the survey represented by this plan and that the survey
 and plan are correct. The said survey was completed
 on the 17 day of September, 1971.

BIRCHWOOD HOLDINGS LTD

Approved under the Land Registry Act
 this 22 day of OCTOBER, 1971.

[Signature]
 Approving Officer, Dept. of Highways.

Sworn before me this 26
 day of OCTOBER, 1971

[Signature]
 A Commissioner for taking Affidavits
 for British Columbia.

This plan lies within the Fraser-Fort George
 Regional District.