

PLAN OF SUBDIVISION OF PART OF
N.W. 1/4 DISTRICT LOT 2425
CARIBOO DISTRICT, BRITISH COLUMBIA

SCALE: 1" = 200'

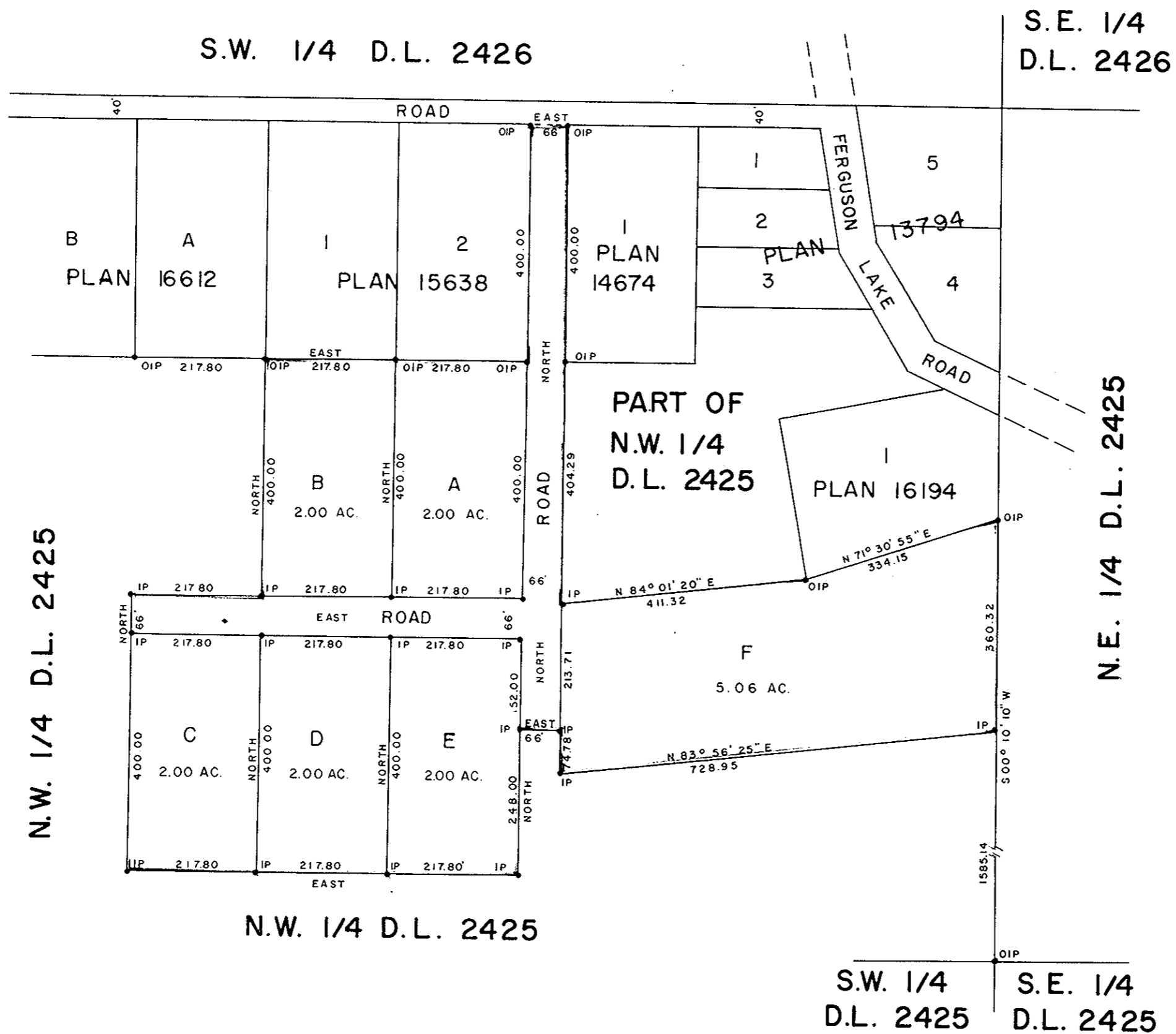
NOTE: Bearings are astronomic, derived from the
East boundary of Lot 2, Plan 15638.

LEGEND: • OIP denotes an old iron pin found.
• IP denotes an iron pin set.

PLAN N^o 19734

Deposited in the Land Registry
Office at Prince George, B.C. this
22nd day of NOVEMBER, 1971.

Registrar



I, DONALD A. DUFFY of the City of Prince George, a British Columbia Land Surveyor, make oath and say that I was present at and did personally superintend the survey represented by this plan and that the survey and plan are correct. The said survey was completed on the 30th day of August, 1971.

[Signature]
B.C.L.S.

Sworn before me this 22 day of NOV, 1971

[Signature]
A Commissioner for taking Affidavits for British Columbia.

Owner *[Signature]* *Erna Anderson*

Witness *[Signature]* *John Coltrane*

Approved under the Land Registry Act this 18 day of NOVEMBER, 1971.

[Signature]
Approving Officer, Dept. of Highways.

This plan lies within the Fraser-Fort George Regional District.