

PLAN OF SUBDIVISION OF PART OF  
EAST 1/2 OF DISTRICT LOT 2101  
CARIBOO DISTRICT, BRITISH COLUMBIA

SCALE: 1" = 100'

NOTE: Bearings are astronomic, derived from the East boundary of Lots 4 to 12, Plan 19529.

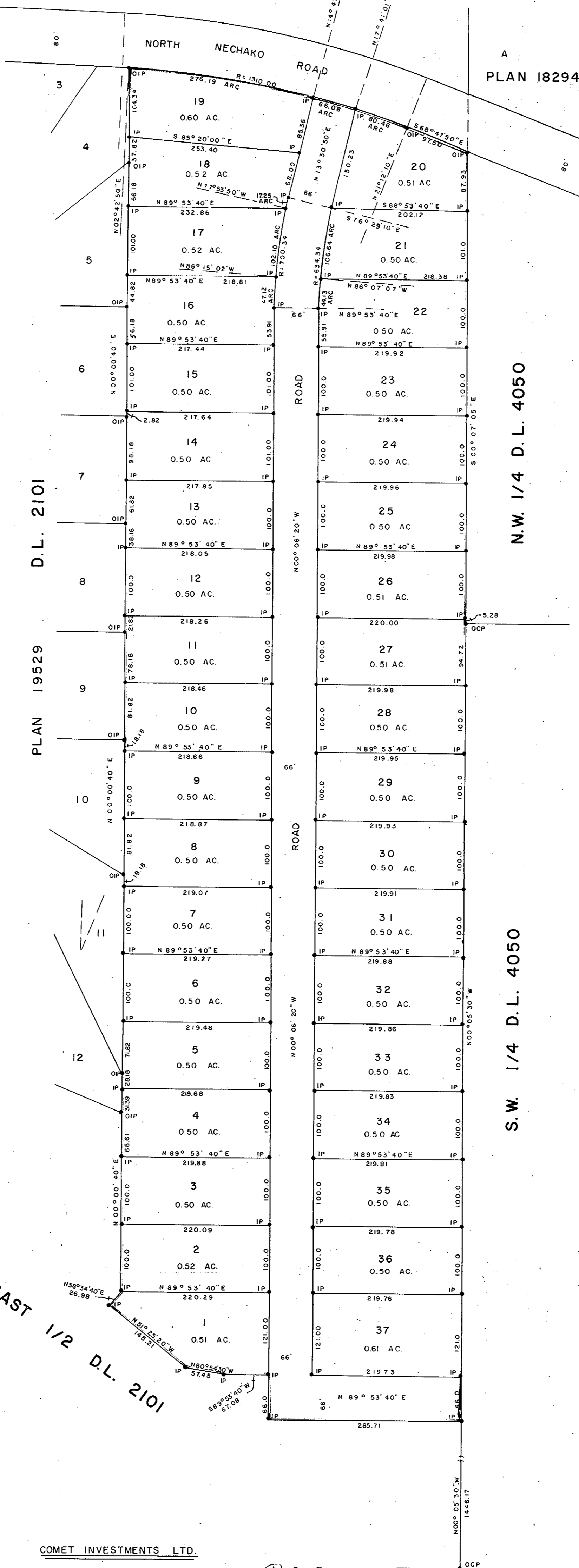
LEGEND: •OCP denotes an old capped iron pin found.  
•OIP denotes an old iron pin found.  
•IP denotes an iron pin set.

PLAN N<sup>o</sup> 19733

Deposited in the Land Registry Office at Prince George, B.C. this 22<sup>nd</sup> day of NOVEMBER, 1971.

Registrar

EAST 1/2 D.L. 2101



I, DONALD A. DUFFY, of the City of Prince George, a British Columbia Land Surveyor make oath and say that I was present at and did personally superintend the survey represented by this plan and that the survey and plan are correct. The said survey was completed on the 24th day of September, 1971.

*[Signature]*  
B.C.L.S.

Sworn before me this 1<sup>st</sup> day of NOVEMBER, 1971.

*[Signature]*  
A Commissioner for taking Affidavits for British Columbia.

COMET INVESTMENTS LTD.

*[Signature]*

P.G. Realty + Insurance Agency Ltd. D.L. 4052

*[Signature]*

Jergin Enterprises Ltd.

*[Signature]*

Approved under the Land Registry Act this 29<sup>th</sup> day of OCTOBER, 1971.

Fort Enterprises Ltd.  
*[Signature]*  
Approving Officer, Dept. of Highways

This plan lies within the Fraser-Fort George Regional District.

W.D. USHER & ASSOCIATES  
LAND SURVEYORS  
PRINCE GEORGE — B.C.  
DV 41 3456 D  
EX 35