

PLAN NO: 19690

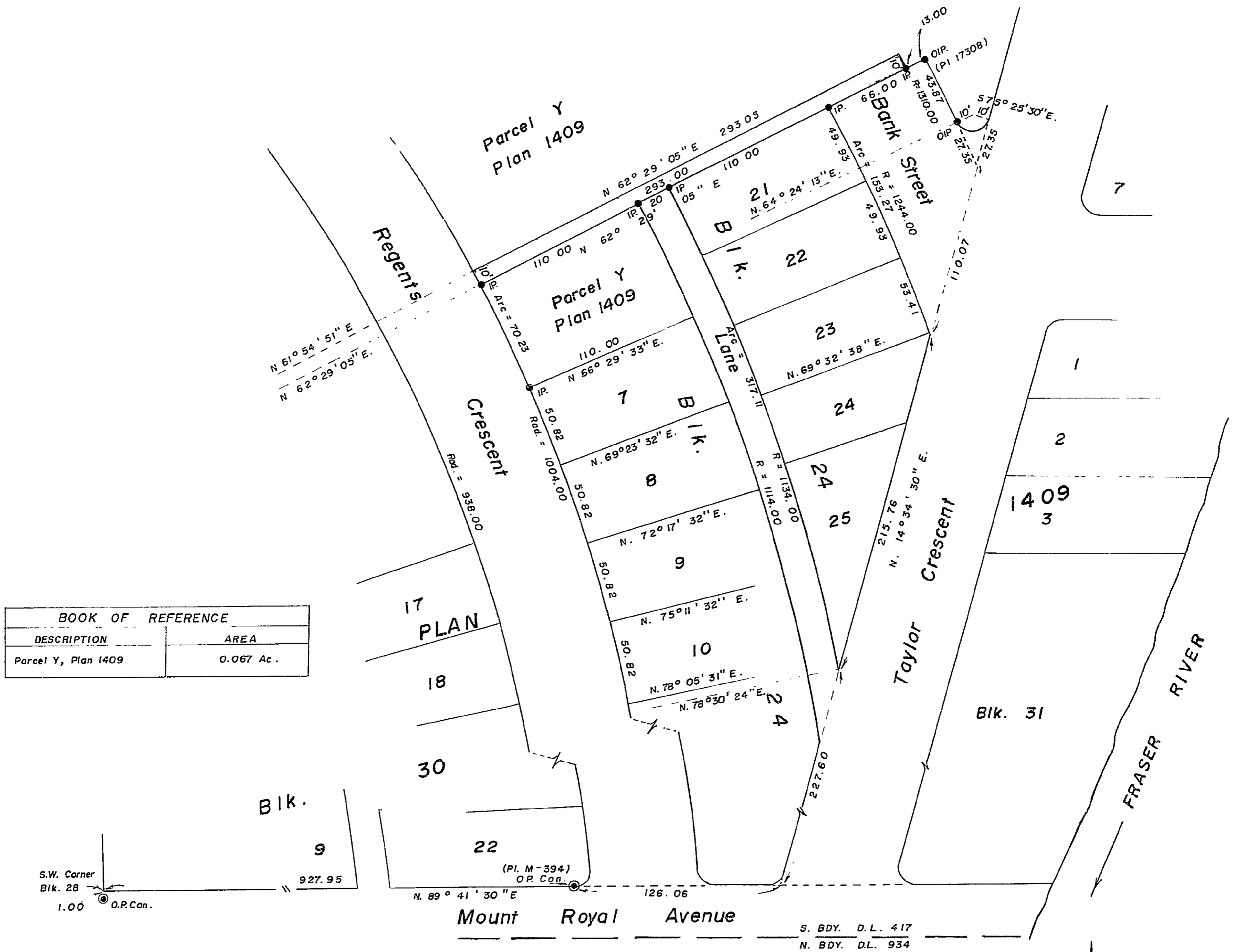
DEPOSITED IN THE LAND REGISTRY OFFICE AT PRINCE RUPERT THIS 10th DAY OF Nov. 1971

VILLAGE of SOUTH FORT GEORGE, B. C.

PLAN OF RIGHT- OF-WAY IN PARCEL Y, PLAN 1409, D.L. 417, CARIBOO DISTRICT.

SCALE: 1" = 50'

[Signature]
DEPUTY REGISTRAR



G. V. BARTELL, OF THE CITY OF PRINCE GEORGE BRITISH COLUMBIA LAND SURVEYOR MAKE OATH AND SAY THAT I WAS PRESENT AT AND DID PERSONALLY SUPERINTEND THE SURVEY REPRESENTED BY THIS PLAN, AND THAT THE SURVEY AND PLAN ARE CORRECT THE SAID SURVEY WAS COMPLETED ON THE 25 DAY OF October 1971

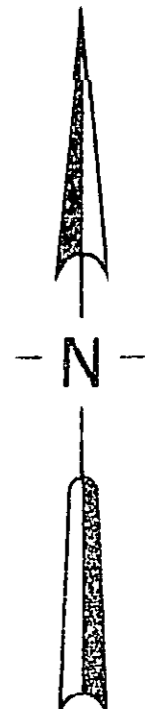
[Signature]
B.C.L.S.
SWORN BEFORE ME AT PRINCE GEORGE, B.C. THIS 8 DAY OF November 1971

[Signature]
A COMMISSIONER FOR TAKING AFFIDAVITS FOR BRITISH COLUMBIA

BEARINGS ARE AT TRINOMIAL AND DISTANCES IN FEET N. Bdy. D.L. 417 (at 20th Ave.) shown as S. 89° 58' E on Plan 1409.

- ⊙ I.P. STANDARD CONCRETE PILE
- ⊙ I.P. STANDARD PIPE POST
- ⊙ I.P. STANDARD PAPER PIN
- ⊙ I.P. STANDARD BOUNDARY MARK
- ⊙ B.T. BEARING TREE
- ⊙ F.N. FENCE LINE

THIS PLAN LIES WITHIN THE FRASER FORT GEORGE REGIONAL DISTRICT



MCCLELLAN, WHITE & GORIE ASSOCIATES
B.C. LAND SURVEYORS
KAMLOOPS & PRINCE GEORGE
REF NO 71108-A