

PLAN OF SUBDIVISION OF  
 LOTS 1, 2, 23, 24, A & B OF BLOCK 24 AND  
 LOTS 1 TO 24 INCLUSIVE AND LOTS A & B OF BLOCK 25  
 AND CLOSED LANE IN BLOCKS 24 & 25  
 PLAN 646

DISTRICT LOT 1429  
 CARIBOO DISTRICT, BRITISH COLUMBIA

SCALE: 1" = 100'

NOTE: Bearings are astronomic, derived from the West  
 boundary of Block 25, as shown on Plan

LEGEND: • OIP denotes an old iron pin found.  
 • IP denotes an iron pin set.

PLAN N<sup>o</sup> 19663

Deposited in the Land Registry  
 Office at Prince George, B.C. this  
 26<sup>th</sup> day of OCT., 1971.

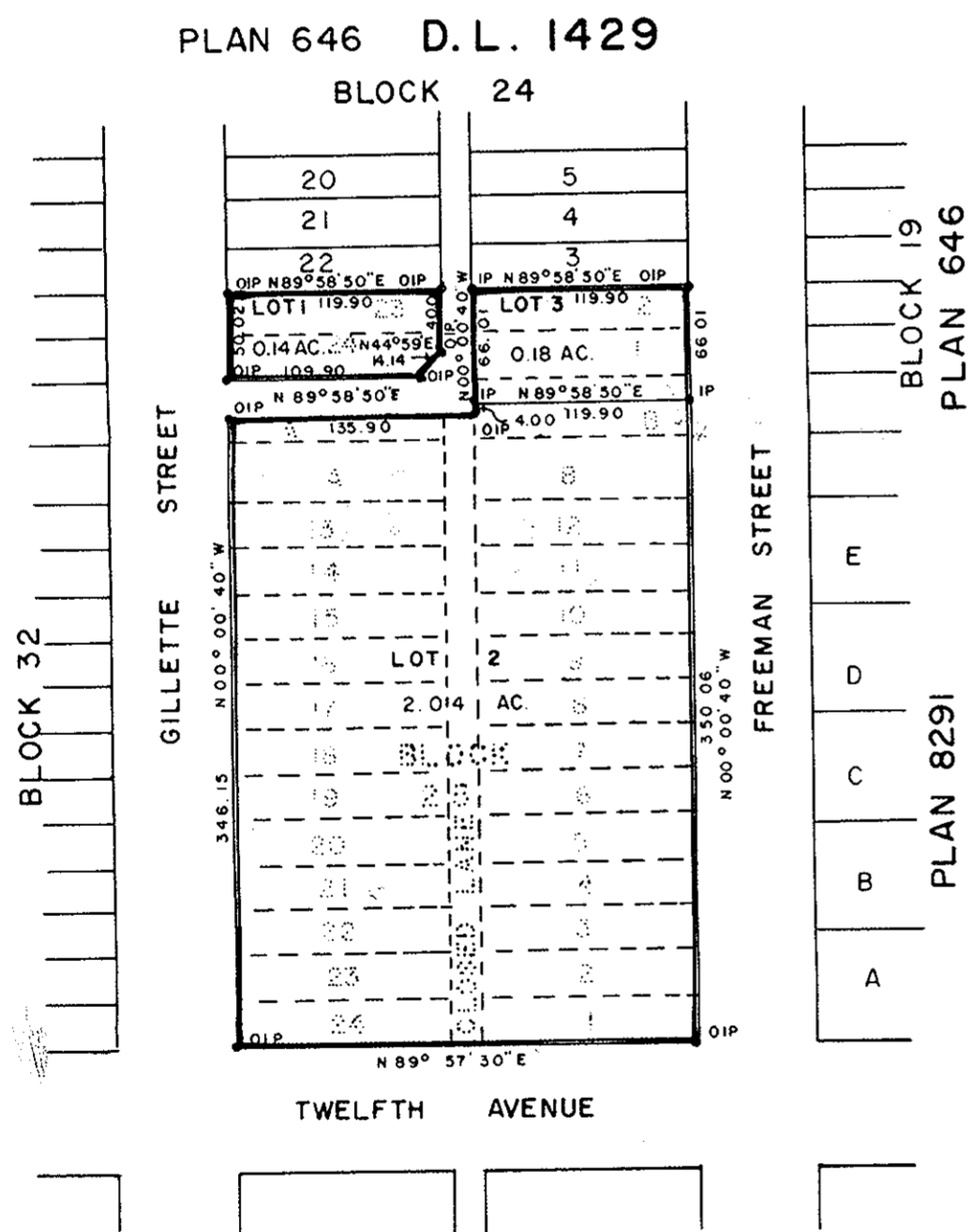
T. W. CARLONS  
 Registrar

RECEIVED

JAN 21 1972

CITY ASSESSOR  
 PRINCE GEORGE

COPY SENT TO  
 RECORDS 2/1/72  
 at



I, DONALD A. DUFFY of the City of Prince George,  
 a British Columbia Land Surveyor, make oath and say  
 that I was present at and did personally superintend  
 the survey represented by this plan and that the survey  
 and plan are correct. The said survey was completed  
 on the 8th day of JULY, 1971.

ROMAN CATHOLIC EPISCOPAL  
 CORPORATION OF PRINCE RUPERT

Fergus O'Grady

Approved under the Land Registry Act  
 this 12<sup>th</sup> day of OCT., 1971.

C. E. O'Grady  
 Approving Officer, City of Prince George

Sworn before me this 4<sup>th</sup>  
 day of OCTOBER, 1971.

A Commissioner for taking Affidavits  
 for British Columbia.

This plan lies within the Fraser-Fort George  
 Regional District.

W. D. USHER & ASSOCIATES  
 LAND SURVEYORS  
 PRINCE GEORGE - B.C.  
 E.L. 7-8 3730 A