

PLAN OF SUBDIVISION OF PART OF
S.E. 1/4 DISTRICT LOT 954
CARIBOO DISTRICT, BRITISH COLUMBIA

(3-1045)

SCALE: 1" = 200'

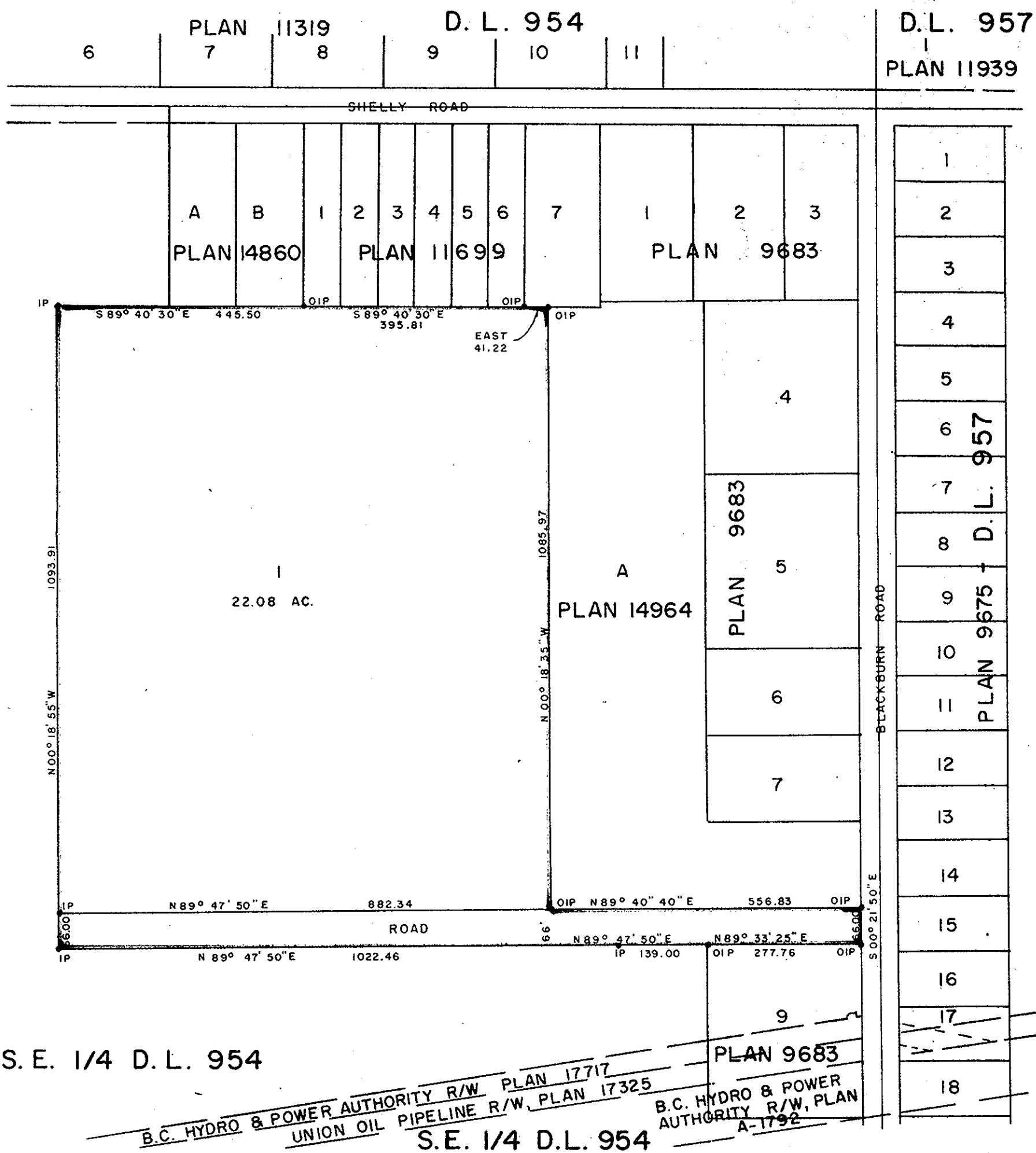
NOTE: Bearings are astronomic, derived from the South boundary of Lots 1 to 6, Plan 11699.

LEGEND: • OIP denotes an old iron pin found.
• IP denotes an iron pin set.

PLAN N^o 19645

Deposited in the Land Registry Office at Prince George, B.C. this 15th day of OCT., 1971.

[Signature]
Registrar



S.E. 1/4 D.L. 954

S.E. 1/4 D.L. 954

APPROVED BY INLAND NATURAL GAS CO. LTD.

[Signature]
Vice-President

[Signature]
Secretary

REAPPROVED

[Signature]

SEPT. 13 1971

Approved under the Land Registry Act this 16 day of April, 1971.

[Signature]
Approving Officer, Dept. of Highways.

I, DONALD A. DUFFY of the City of Prince George, a British Columbia Land Surveyor, make oath and say that I was present at and did personally superintend the survey represented by this plan and that the survey and plan are correct. The said survey was completed on the 3rd day of December, 1970.

[Signature]
B.C.L.S.

[Signature]
Owner

[Signature]
Witness

Sworn before me this 22 day of APRIL, 1971.

[Signature]
A Commissioner for taking Affidavits for British Columbia.

This plan lies within the Fraser-Fort George Regional District.

W. D. USHER & ASSOCIATES
LAND SURVEYORS
PRINCE GEORGE B.C.
D.P.
D.J.
1909.B