

PLAN OF SUBDIVISION OF PART OF  
N.W. 1/4 DISTRICT LOT 4031  
CARIBOO DISTRICT, BRITISH COLUMBIA

SCALE: 1" = 200'

NOTE: Bearings are astronomic, derived from the East boundary of N.W. 1/4 D.L. 4031, as shown on Plan 10973.

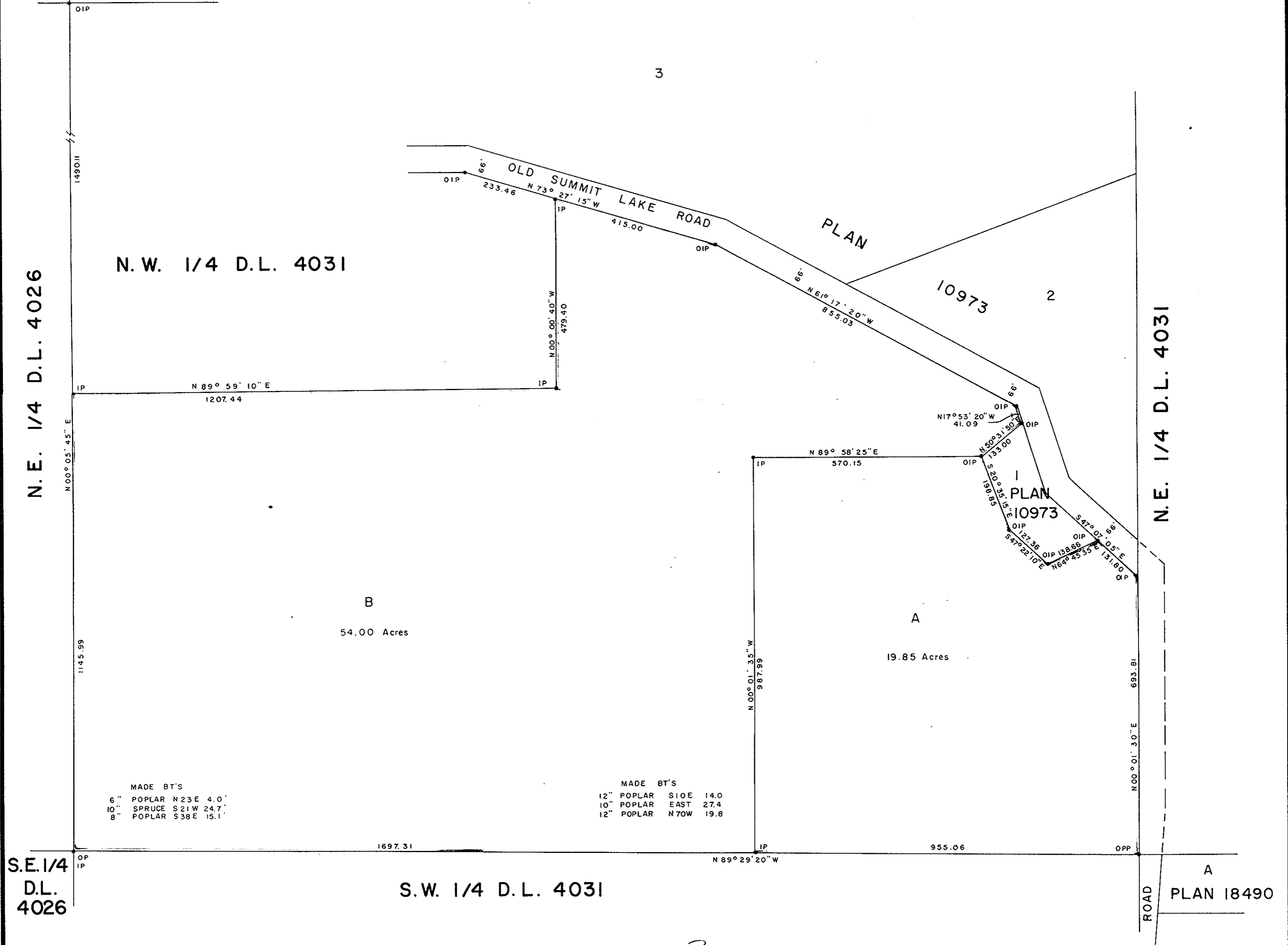
LEGEND: •OPP denotes an old pipe post found.  
•OIP denotes an old iron pin found.  
•OP denotes an old wooden post found.  
•IP denotes an iron pin set.

PLAN N<sup>o</sup> 19629

Deposited in the Land Registry Office at Prince George, B.C. this 8<sup>th</sup> day of OCT., 1971.

*[Signature]*  
Registrar

S.E. 1/4 D.L. 4025  
PLAN 10973 - S.W. 1/4 D.L. 4032



MADE BT'S  
6" POPLAR N 23 E 4.0'  
10" SPRUCE S 21 W 24.7'  
8" POPLAR S 38 E 15.1'

MADE BT'S  
12" POPLAR S 10 E 14.0'  
10" POPLAR EAST 27.4'  
12" POPLAR N 70 W 19.8'

S.E. 1/4 D.L. 4026  
S.W. 1/4 D.L. 4031  
ROAD PLAN 18490

I, DONALD A. DUFFY of the City of Prince George, a British Columbia Land Surveyor, make oath and say that I was present at and did personally superintend the survey represented by this plan and that the survey and plan are correct. The said survey was completed on the 8<sup>th</sup> day of September, 1971.

Owner Bilton Park  
Witness [Signature]

Approved under the Land Registry Act this 28<sup>th</sup> day of SEPTEMBER 1971.  
*[Signature]*  
Approving Officer, Dept. of Highways.

Sworn before me this 28 day of SEP, 1971

*[Signature]*  
A Commissioner for taking Affidavits for British Columbia.

This plan lies within the Fraser-Fort George Regional District.

W. D. USHER & ASSOCIATES  
LAND SURVEYORS  
PRINCE GEORGE - B.C.  
EM 25-27  
EH 30-32 3654 A