

PLAN No 19616

Deposited in the Land Registry Office at
Prince George on the ... day of ... 19...

[Signature]
Registrar.

PROVINCE of BRITISH COLUMBIA

**PLAN OF RIGHT-OF-WAY
IN LOTS A and B, PLAN 19614,
and RESIDUE LOT 10, PLAN 8921,
S.W. 1/4 D.L. 635, CARIBOO DISTRICT.
Scale: 1" = 100'**

Bearings are astronomic and are derived from
S. Bdy. Lot 10, Plan 8921, shown as
S. 89° 42' 30" E.

I, V. Bartell... of the City of Prince George
British Columbia Land Surveyor, make oath and
say that I was present at and did personally
superintend the survey represented by this
plan and that the survey and plan are correct.
The said survey was completed on
the 2nd day of July, 1971.

[Signature]

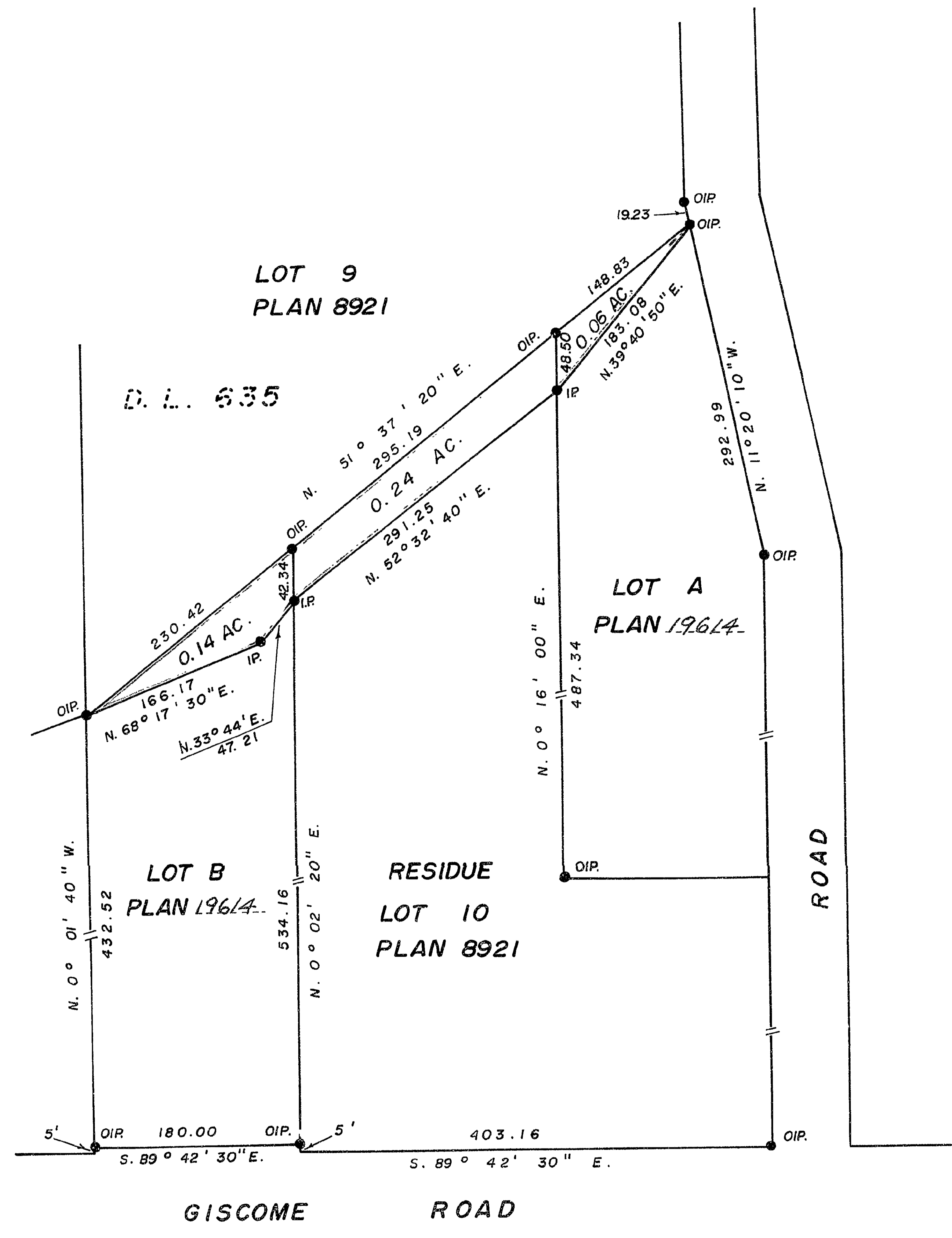
Sworn before me at Prince George...
this 2nd day of July, 1971.

[Signature]
A commissioner for taking affidavits
for British Columbia.

THIS PLAN LIES WITHIN THE
FRASER-FORT-GEORGE
REGIONAL DISTRICT

McWilliam—Whyte—Goble & Associates
B.C. LAND SURVEYORS
PRINCE GEORGE/SMITHERS/KAMLOOPS

REF NO: 71129 - A



BOOK OF REFERENCE	
S. W. 1/4 D. L. 635	
Description	Area
LOT A, PLAN 19614	0.06 AC
LOT B, PLAN 19614	0.14 AC
RESIDUE LOT 10, PLAN 8921	0.24 AC