

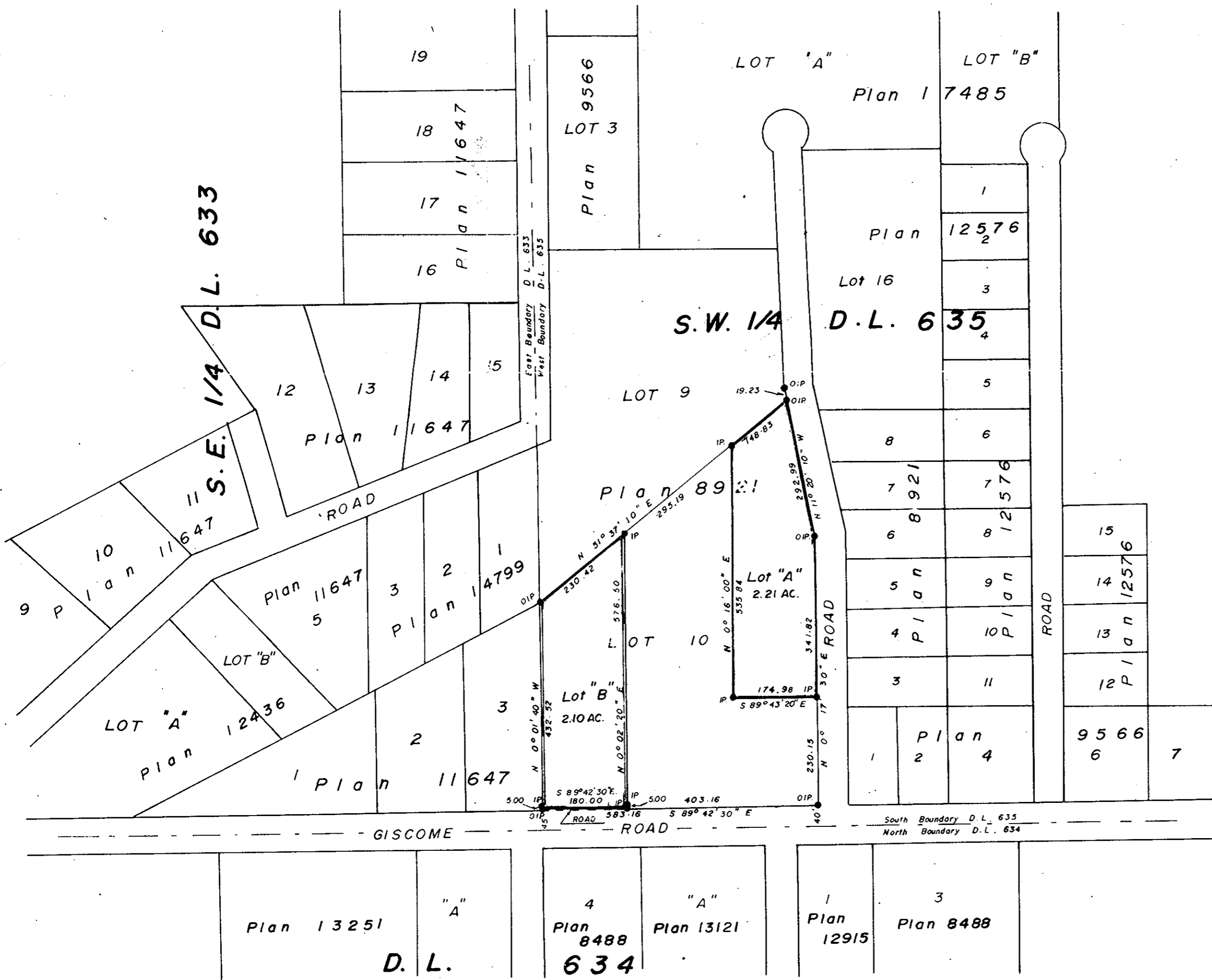
PLAN OF SUBDIVISION OF
PART OF LOT 10, PLAN 8921,
SOUTH WEST 1/4 OF DISTRICT LOT 635,
CARIBOO DISTRICT

PLAN NO. 19614

DEPOSITED IN THE LAND REGISTRY OFFICE AT
PRINCE GEORGE THIS 5th DAY OF OCT. 1971

[Signature]
REGISTRAR

SCALE: 1" = 200'

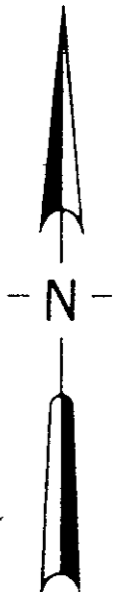


I, V. BARTELL, OF THE CITY OF PRINCE GEORGE
BRITISH COLUMBIA LAND SURVEYOR MAKE OATH AND SAY
THAT I WAS PRESENT AT AND DID PERSONALLY SUPERINTEND
THE SURVEY REPRESENTED BY THIS PLAN, AND THAT THE
SURVEY AND PLAN ARE CORRECT THE SAID SURVEY WAS
COMPLETED ON THE 2nd DAY OF July 1971

BEARINGS ARE AN IRON NAIL AND ARE DERIVED FROM
EAST BDY. LOT 10, SHOWN ON PLAN 8921 AS
N 0° 17' 30" E.

APPROVED UNDER THE LAND REGISTRY ACT
THIS 27th DAY OF August 1971.

[Signature]
REGISTERAR



[Signature]
B.C.L.S.

SWORN BEFORE ME AT Prince George
THIS 2nd DAY OF July 1971.

- 1/4" STANDARD CONCRETE TIE BARS
- 1/2" STANDARD CONCRETE TIE BARS
- 3/4" STANDARD CONCRETE TIE BARS
- 1" STANDARD CONCRETE TIE BARS
- 1 1/2" STANDARD CONCRETE TIE BARS
- 2" STANDARD CONCRETE TIE BARS
- 3" STANDARD CONCRETE TIE BARS
- 4" STANDARD CONCRETE TIE BARS
- 6" STANDARD CONCRETE TIE BARS
- 8" STANDARD CONCRETE TIE BARS
- 10" STANDARD CONCRETE TIE BARS
- 12" STANDARD CONCRETE TIE BARS
- 14" STANDARD CONCRETE TIE BARS
- 16" STANDARD CONCRETE TIE BARS
- 18" STANDARD CONCRETE TIE BARS
- 20" STANDARD CONCRETE TIE BARS
- 22" STANDARD CONCRETE TIE BARS
- 24" STANDARD CONCRETE TIE BARS
- 26" STANDARD CONCRETE TIE BARS
- 28" STANDARD CONCRETE TIE BARS
- 30" STANDARD CONCRETE TIE BARS
- 32" STANDARD CONCRETE TIE BARS
- 34" STANDARD CONCRETE TIE BARS
- 36" STANDARD CONCRETE TIE BARS
- 38" STANDARD CONCRETE TIE BARS
- 40" STANDARD CONCRETE TIE BARS
- 42" STANDARD CONCRETE TIE BARS
- 44" STANDARD CONCRETE TIE BARS
- 46" STANDARD CONCRETE TIE BARS
- 48" STANDARD CONCRETE TIE BARS
- 50" STANDARD CONCRETE TIE BARS
- 52" STANDARD CONCRETE TIE BARS
- 54" STANDARD CONCRETE TIE BARS
- 56" STANDARD CONCRETE TIE BARS
- 58" STANDARD CONCRETE TIE BARS
- 60" STANDARD CONCRETE TIE BARS
- 62" STANDARD CONCRETE TIE BARS
- 64" STANDARD CONCRETE TIE BARS
- 66" STANDARD CONCRETE TIE BARS
- 68" STANDARD CONCRETE TIE BARS
- 70" STANDARD CONCRETE TIE BARS
- 72" STANDARD CONCRETE TIE BARS
- 74" STANDARD CONCRETE TIE BARS
- 76" STANDARD CONCRETE TIE BARS
- 78" STANDARD CONCRETE TIE BARS
- 80" STANDARD CONCRETE TIE BARS
- 82" STANDARD CONCRETE TIE BARS
- 84" STANDARD CONCRETE TIE BARS
- 86" STANDARD CONCRETE TIE BARS
- 88" STANDARD CONCRETE TIE BARS
- 90" STANDARD CONCRETE TIE BARS
- 92" STANDARD CONCRETE TIE BARS
- 94" STANDARD CONCRETE TIE BARS
- 96" STANDARD CONCRETE TIE BARS
- 98" STANDARD CONCRETE TIE BARS
- 100" STANDARD CONCRETE TIE BARS

[Signature]
Hans J. Hallock
Melanie Hallock

[Signature]
A COMMISSIONER FOR TAKING AFFIDAVITS
FOR BRITISH COLUMBIA

McWILLIAM, WHYTE, GOBLE & ASSOCIATES
B.C. LAND SURVEYORS
PAMPLONAS, SMITHERS - PRINCE GEORGE
REF. NO.: 71129