

PLAN OF SUBDIVISION OF PART OF  
N.E. 1/4 DISTRICT LOT 4047  
CARIBOO DISTRICT, BRITISH COLUMBIA

SCALE: 1" = 100'

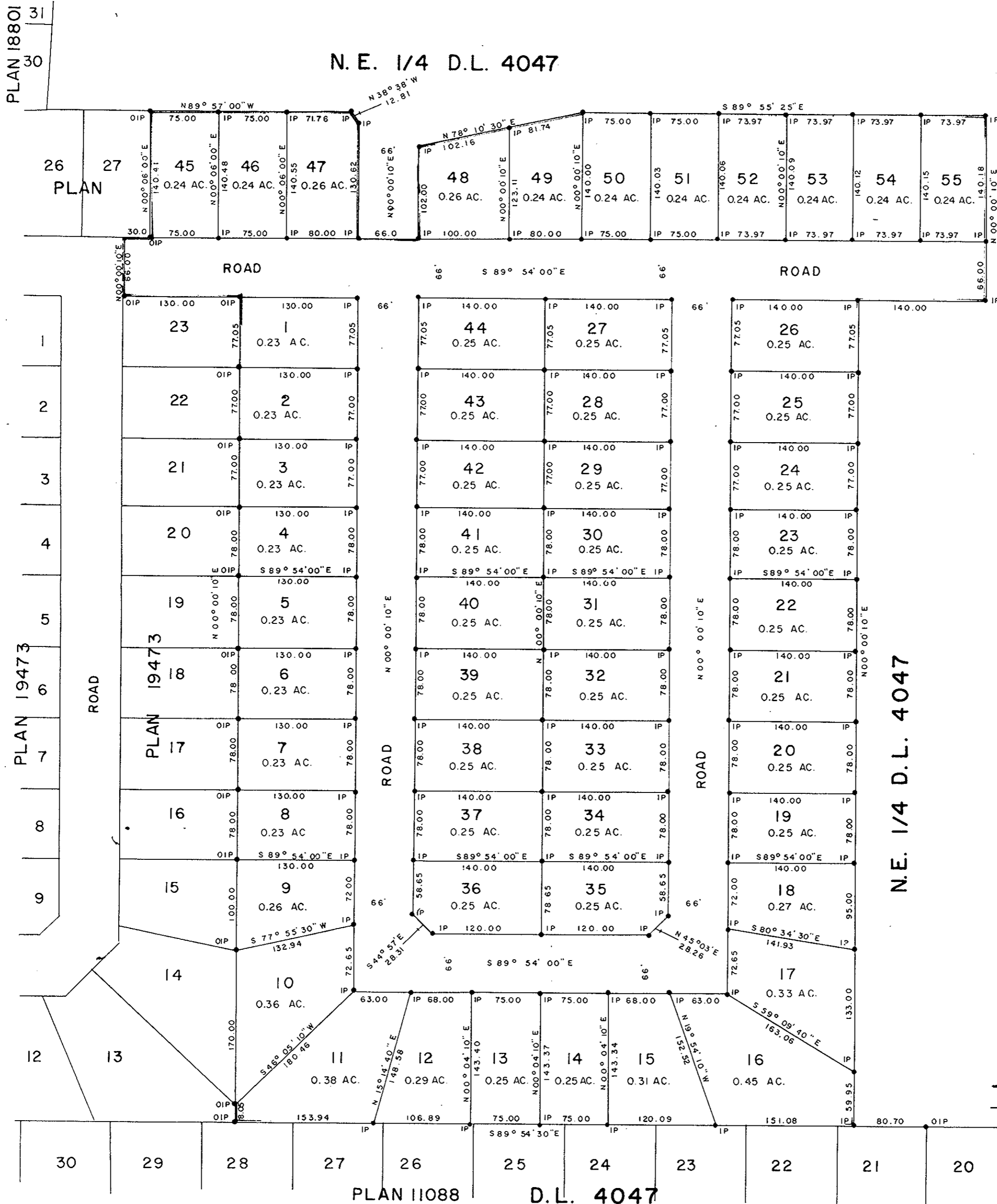
NOTE: Bearings are astronomic, derived from the East boundary of Lots 13 to 23, Plan 19473.

LEGEND: •OIP denotes an old iron pin found.  
•IP denotes an iron pin set.

PLAN N° 19550

Deposited in the Land Registry Office at Prince George, B.C. this 9th day of SEPT., 1971.

*[Signature]*  
Deputy Registrar



MORTGAGEE  
CENTRAL WHOLESALE  
IMPORTING CO. LTD.  
*[Signature]*  
PRESIDENT

I, DONALD A. DUFFY of the City of Prince George, a British Columbia Land Surveyor, make oath and say that I was present at and did personally superintend the survey represented by this plan and that the survey and plan are correct. The said survey was completed on the 21 day of JULY, 1971.

*[Signature]*  
B.C.L.S.

GLENVIEW ESTATES LTD.  
*[Signature]*  
President

Approved under the Land Registry Act this 8th day of SEPTEMBER, 1971.

*[Signature]*  
Approving Officer, Dept. of Highways.

Sworn before me this 9 day of SEPT., 1971.

*[Signature]*  
A Commissioner for taking Affidavits for British Columbia.

This plan lies within the Fraser-Fort George Regional District.