

PLAN OF SUBDIVISION OF PART OF
EAST HALF OF DISTRICT LOT 2101
CARIBOO DISTRICT, BRITISH COLUMBIA

SCALE: 1" = 100'

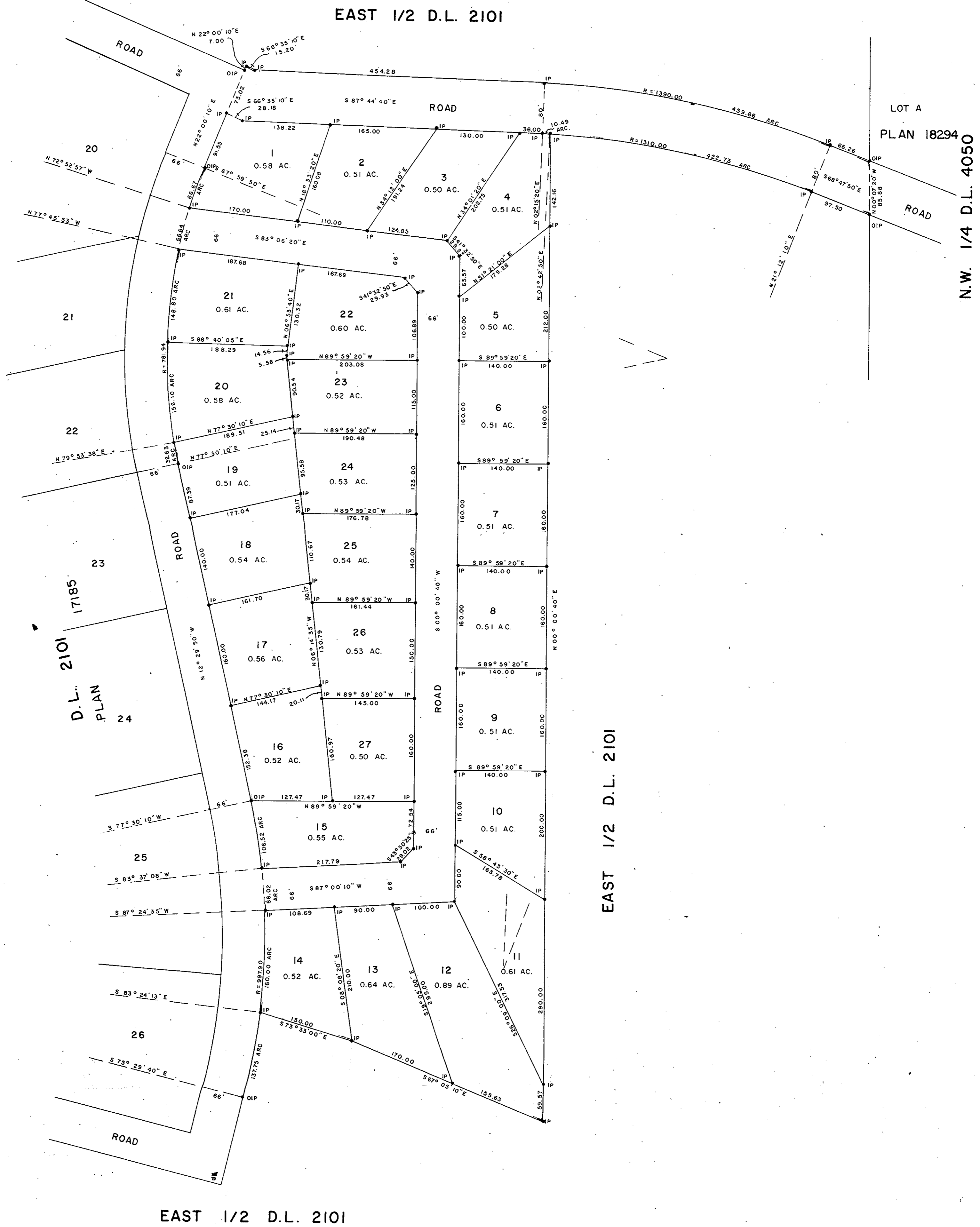
NOTE: Bearings are astronomic, derived from the East boundary of the Road adjacent to Lots 23, 24 & 25, Plan 17185.

LEGEND: •OIP denotes an old iron pin found.
•IP denotes an iron pin set.

PLAN No 19529

Deposited in the Land Registry Office at Prince George, B.C. this 27th day of August, 1971

Registrar



I, DONALD A. DUFFY of the City of Prince George, a British Columbia Land Surveyor, make oath and say that I was present at and did personally superintend the survey represented by this plan and that the survey and plan are correct. The said survey was completed on the 17th day of JUNE, 1971.

[Signature]
D. A. Duffy
B. C. L. S.

Sworn before me this 17th day of JUNE, 1971.

A Commissioner for Taking Affidavits for British Columbia.

P. REALTY + INSURANCE
AGENCY LTD.,
[Signature]

COMET INVESTMENTS LTD.

[Signature]
Ver: *[Signature]*
[Signature]

JERIN ENTERPRISES LTD.

P.P. J. Gorman Pres.

ART ENTERPRISES LTD.
P.P. J. Surgeon Pres.
D. Surgeon Sec.

Approved under the Land Registry Act this 9th day of August, 1971

[Signature]
Approving Officer, Dept. of Highways.

This plan lies within the Fraser-Fort George Regional District.

W.D. USHER & ASSOCIATES
LAND SURVEYORS
PRINCE GEORGE - B. C.
DT 64-67 3456 B
DE 37-51