

PLOTTED (JS)(KS)

PLAN OF SUBDIVISION OF PART OF
S.E. 1/4 OF DISTRICT LOT 4038
CARIBOO DISTRICT, BRITISH COLUMBIA

PLAN NO 19521

Deposited in the Land Registry
Office at Prince George, B.C. this
20TH day of AUGUST, 1971

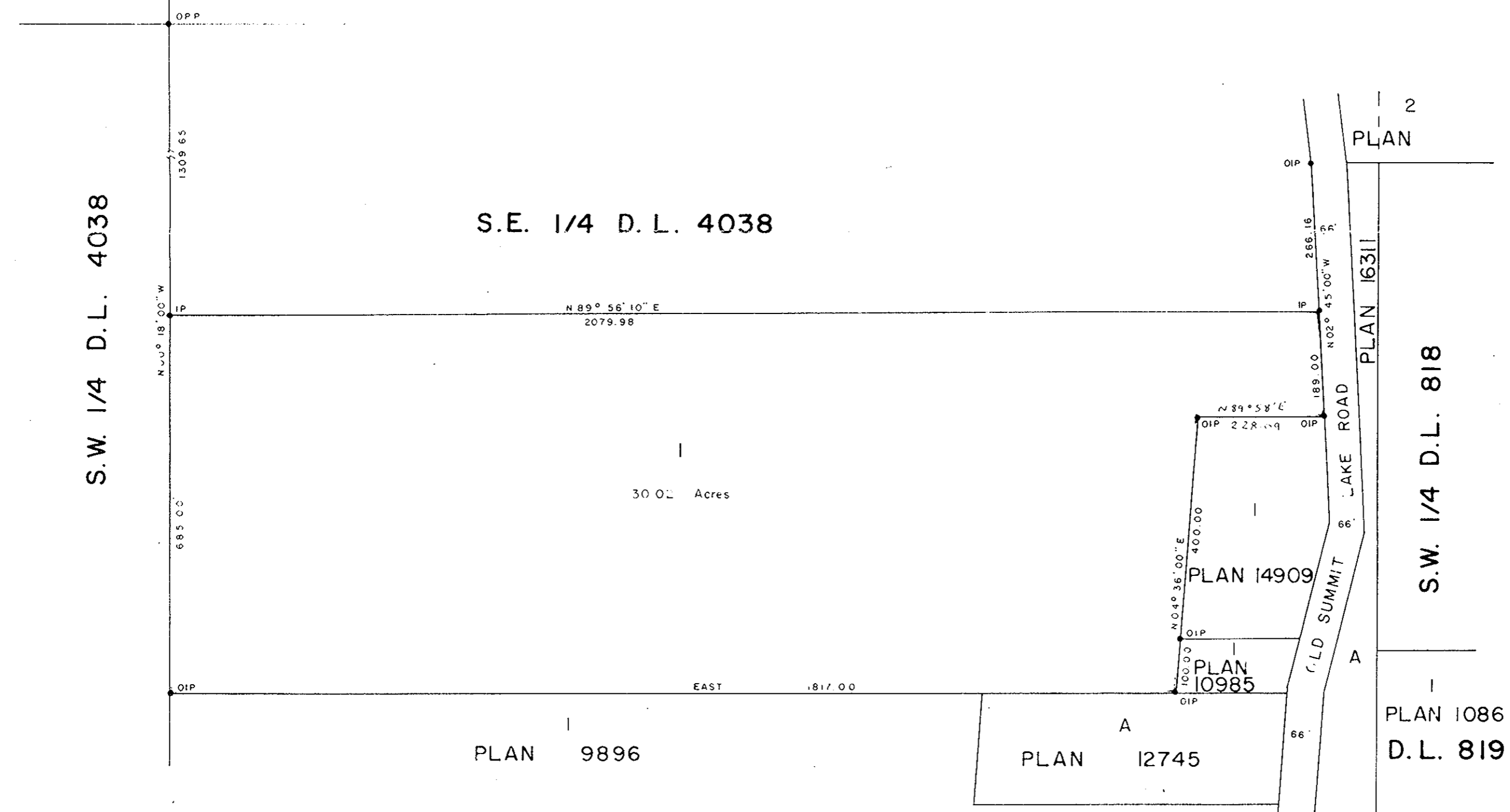
SCALE: 1" = 200'

NOTE: Bearings are astronomic, derived from the North
boundary of Lot 1, Plan 9896, D.L. 4038.

LEGEND:
•OPP denotes an old pipe post found.
•OIP denotes an old iron pin found.
•IP denotes an iron pin set.

[Signature]
Registrar

N.W. 1/4 D.L. 4038 N.E. 1/4 D.L. 4038



I, DONALD A. DUFFY of the City of Prince George, a British Columbia Land Surveyor, make oath and say that I was present at and did personally superintend the survey represented by this plan and that the survey and plan are correct. The said survey was completed on the 15th day of July, 1971.

Owner *[Signature]*
Witness *[Signature]*

Approved under the Land Registry Act
this 20th day of August, 1971.

[Signature]
Approving Officer, Dept. of Highways.

Sworn before me this 4TH day of August, 1971.

[Signature]
A Commissioner for taking Affidavits
for British Columbia.

This plan lies within the Fraser-Fort George
Regional District.