

RECEIVED
SEP 17 1971

PROVINCIAL ASSESSOR
PRINCE GEORGE, B. C.

PLAN OF SUBDIVISION OF PART OF
LOT A, PLAN 16132
DISTRICT LOT 2425
CARIBOO DISTRICT, BRITISH COLUMBIA

PLAN N^o 19491

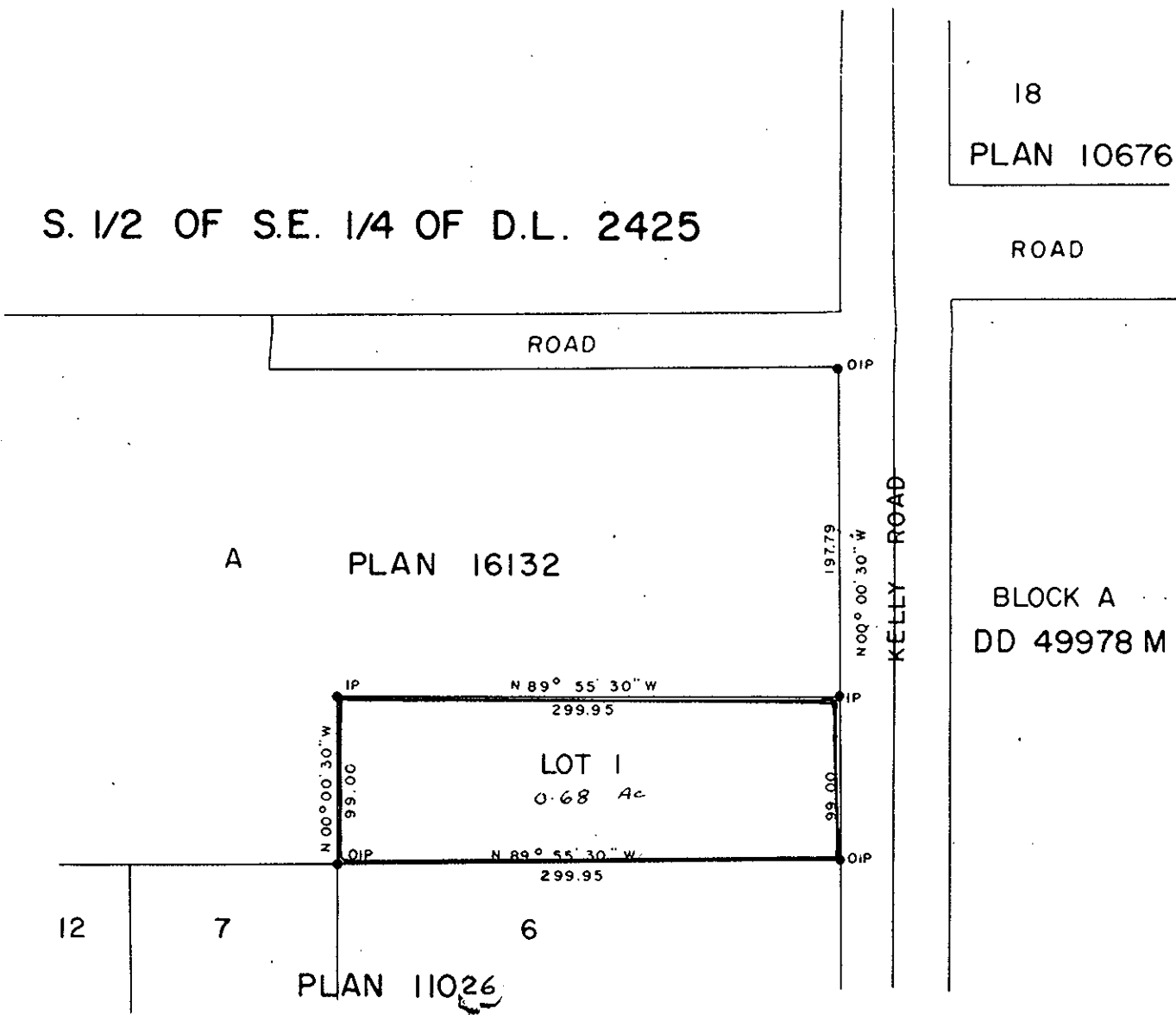
Deposited in the Land Registry
Office at Prince George, B. C. this
9th day of August, 1971

SCALE: 1" = 100'

NOTE: Bearings are astronomic, derived from the
East boundary of Lot A, Plan 16132.

T. W. Carlow
Registrar

LEGEND: • OIP denotes an old iron pin found.
• IP denotes an iron pin set.



Mortgagee -----

I, DONALD A. DUFFY of the City of Prince George,
a British Columbia Land Surveyor, make oath and say
that I was present at and did personally superintend
the survey represented by this plan and that the survey
and plan are correct. The said survey was completed
on the 3rd day of August, 1971.

[Signature]
BCLS

Sworn before me this 13th
day of May, 1971.

[Signature]
A Commissioner for taking Affidavits
for British Columbia

Owner Joley J. Gaeu

Approved under the Land Registry Act
this 6 day of August, 1971.

Witness Mike Lemay

[Signature]
Approving Officer, Dept. of Highways.

Owner E. Salda

This plan lies within the Fraser-Fort George
Regional District

Witness V. Kajins