

PLAN TO ACCOMPANY BY-LAW 2313
CITY OF PRINCE GEORGE
CLOSING PART OF 1st AVENUE
ADJOINING NORTH BOUNDARY BLOCK W, PLAN B 3783,
DISTRICT LOT 343, CARIBOO DISTRICT.

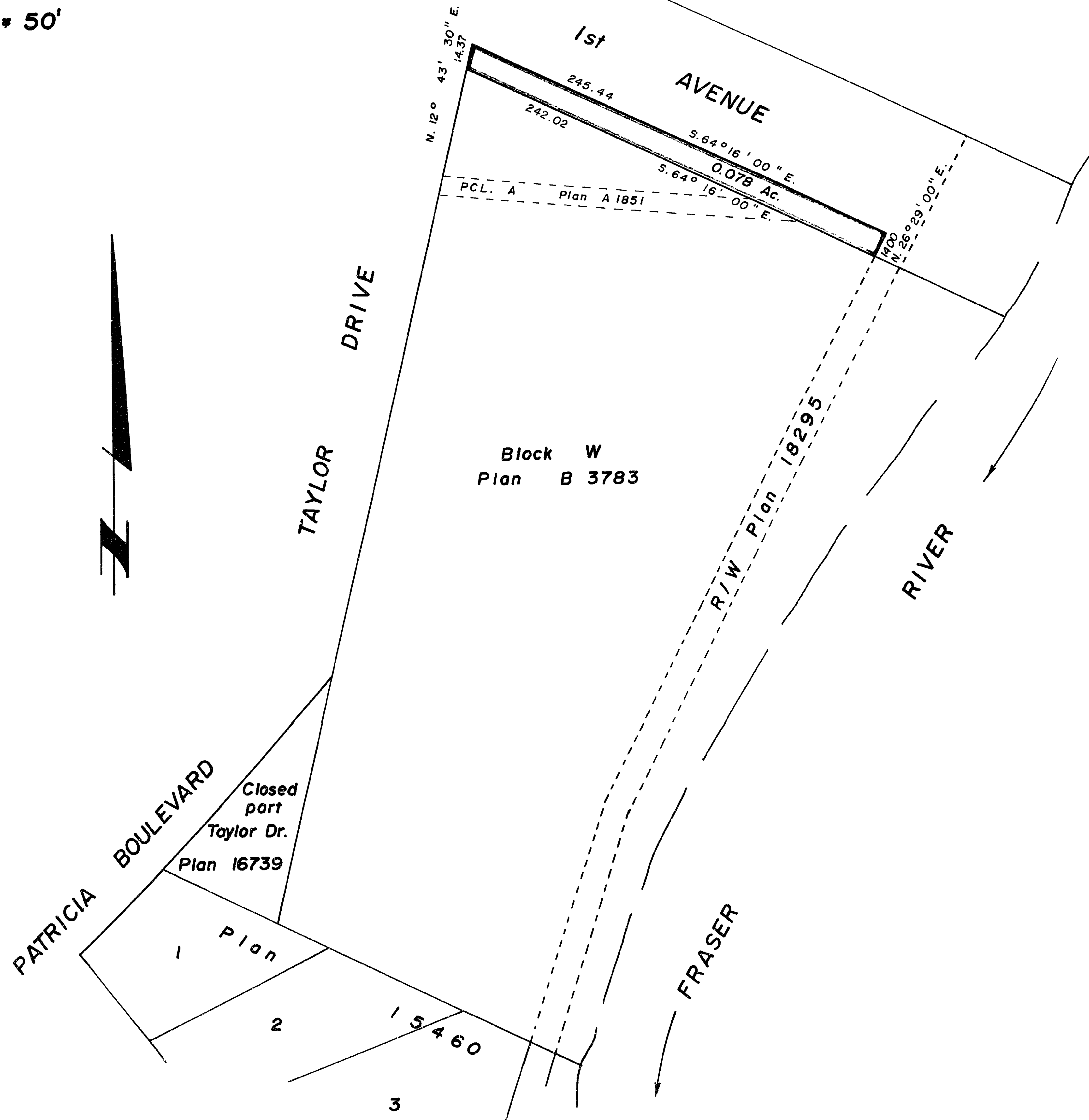
Scale 1" = 50'

Assigned Parcel Z
of Plan 1268

PLAN NO. 19486

Deposited in the Land Registry Office at
Prince George this 23 day of April 1971.

[Signature]
Registrar



Certified Correct
according to Land Registry Office Records
this 23 day of April 1971.

[Signature]
V. Bartell, B.C.L.S.

This plan lies within the Fraser Fort -
George Regional District.

McWilliam, Whyte, Goble, & Associates,
B. C. Land Surveyors,
Prince George - Kamloops - Smithers.

REF. NO. 71100-7B