

PLAN OF SUBDIVISION OF PART OF
N.E. 1/4 DISTRICT LOT 4047
CARIBOO DISTRICT, BRITISH COLUMBIA

SCALE: 1" = 100'

NOTE: Bearings are astronomic, derived from the East boundaries of Lots 3 to 11, Plan 17047.

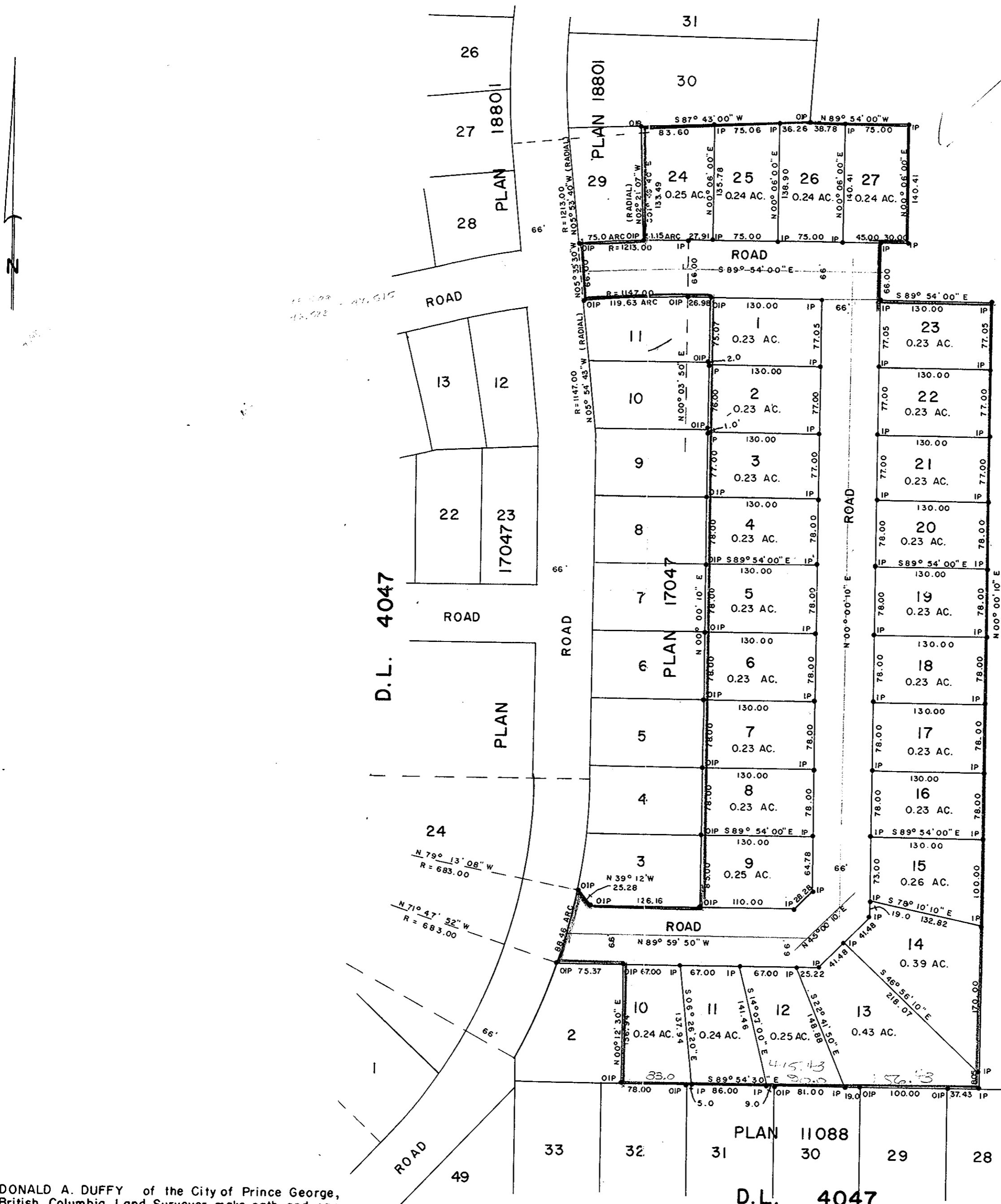
LEGEND: • OIP denotes an old iron pin found.
• IP denotes an iron pin set.

PLOTTED (GU)

PLAN N° 19473

Deposited in the Land Registry Office at Prince George, B.C. this 30th day of July, 1971.

Registrar T. W. Carlow



N.E. 1/4 D.L. 4047

67
67
134

H. E. Hillner
PRESIDENT

I, DONALD A. DUFFY of the City of Prince George, a British Columbia Land Surveyor, make oath and say that I was present at and did personally superintend the survey represented by this plan and that the survey and plan are correct. The said survey was completed on the 28th day of May, 1971.

[Signature]
B.C.L.S.

Sworn before me this 28th day of July, 1971

A Commissioner for taking Affidavits for British Columbia.

RECEIVED

SEP 1 1971

MECHANICAL IMPROVEMENT DISTRICT

GLENVIEW ESTATES

[Signature]
President

Approved under the Land Registry Act this 28th day of July, 1971.

[Signature]
Approving Officer, Dept. of Highways.

This plan lies within the Fraser-Fort George Regional District.

W. D. USHER & ASSOCIATES
LAND SURVEYORS
PRINCE GEORGE B.C.