

PLAN OF SUBDIVISION OF
 LOT 221, PLAN 16269 EXCEPT PLANS 19106 &
 19163 AND PART OF LOT A, PLAN 9004
 DISTRICT LOT 753
 CARIBOO DISTRICT, BRITISH COLUMBIA

SCALE: 1" = 100'

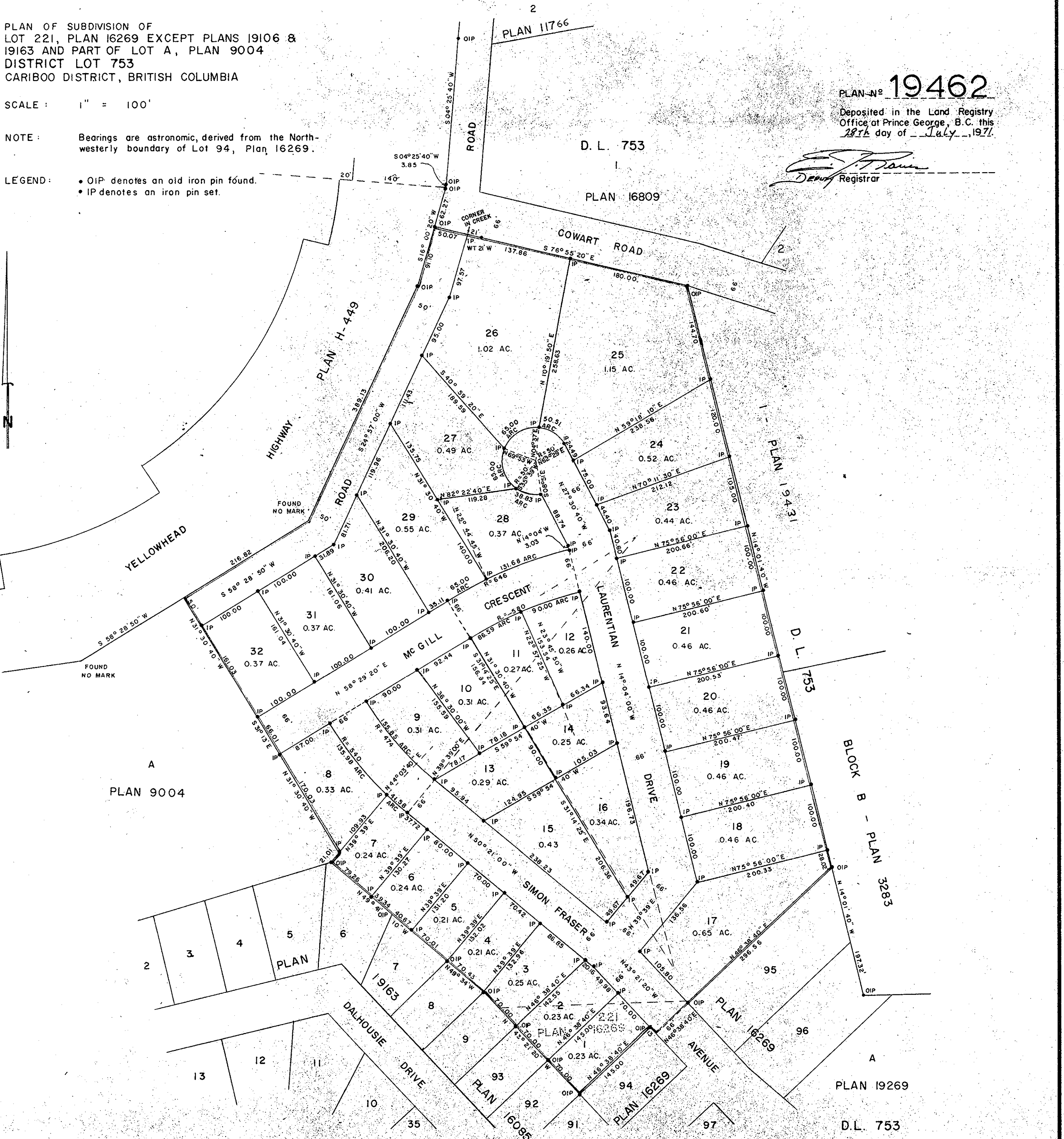
NOTE: Bearings are astronomic, derived from the North-westerly boundary of Lot 94, Plan 16269.

LEGEND:
 • OIP denotes an old iron pin found.
 • IP denotes an iron pin set.

PLAN-N^o 19462

Deposited in the Land Registry
 Office at Prince George, B.C. this
 28th day of July, 1971.

E. J. Brown
 Registrar



I, DONALD A. DUFFY of the City of Prince George, a British Columbia Land Surveyor, make oath and say that I was present at and did personally superintend the survey represented by this plan and that the survey and plan are correct. The said survey was completed on the 16th day of April, 1971.

Donald A. Duffy
 B.C.L.S.

Sworn before me this 19th day of July, 1971

A Commissioner for Taking Affidavits
 for British Columbia.

PRINCE GEORGE COLLEGE LANDS, LTD.

Fergus O'Grady

Mortgagee
 MONTREAL TRUST COMPANY

John Wilson

Paul Adams

Approved under the Land Registry Act
 this 12th day of July, 1971.

M. G. Elton
 Approving Officer, Dept. of Highways.

This plan lies within the Fraser-Fort George
 Regional District.

W. D. USHER & ASSOCIATES
 LAND SURVEYORS
 PRINCE GEORGE - B.C.
 2433