

RECEIVED

AUG 17 1971

CITY ASSESSOR
PRINCE GEORGE

Plotted (GN)

PLAN No 19429

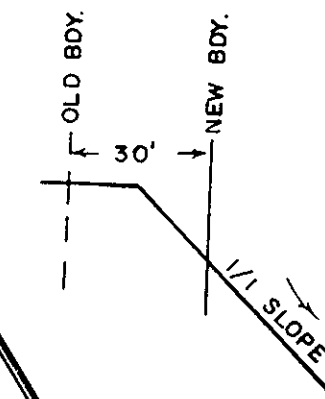
Deposited in the Land Registry Office at
Prince George on the 13th day of July 1971.

[Signature]
Registrar

PLAN OF SUBDIVISION OF
LOTS 1-9 INCLUSIVE, PLAN 18712,
AND PART OF DISTRICT LOT 1427,
CARIBOO DISTRICT.

SCALE: 1" = 100'

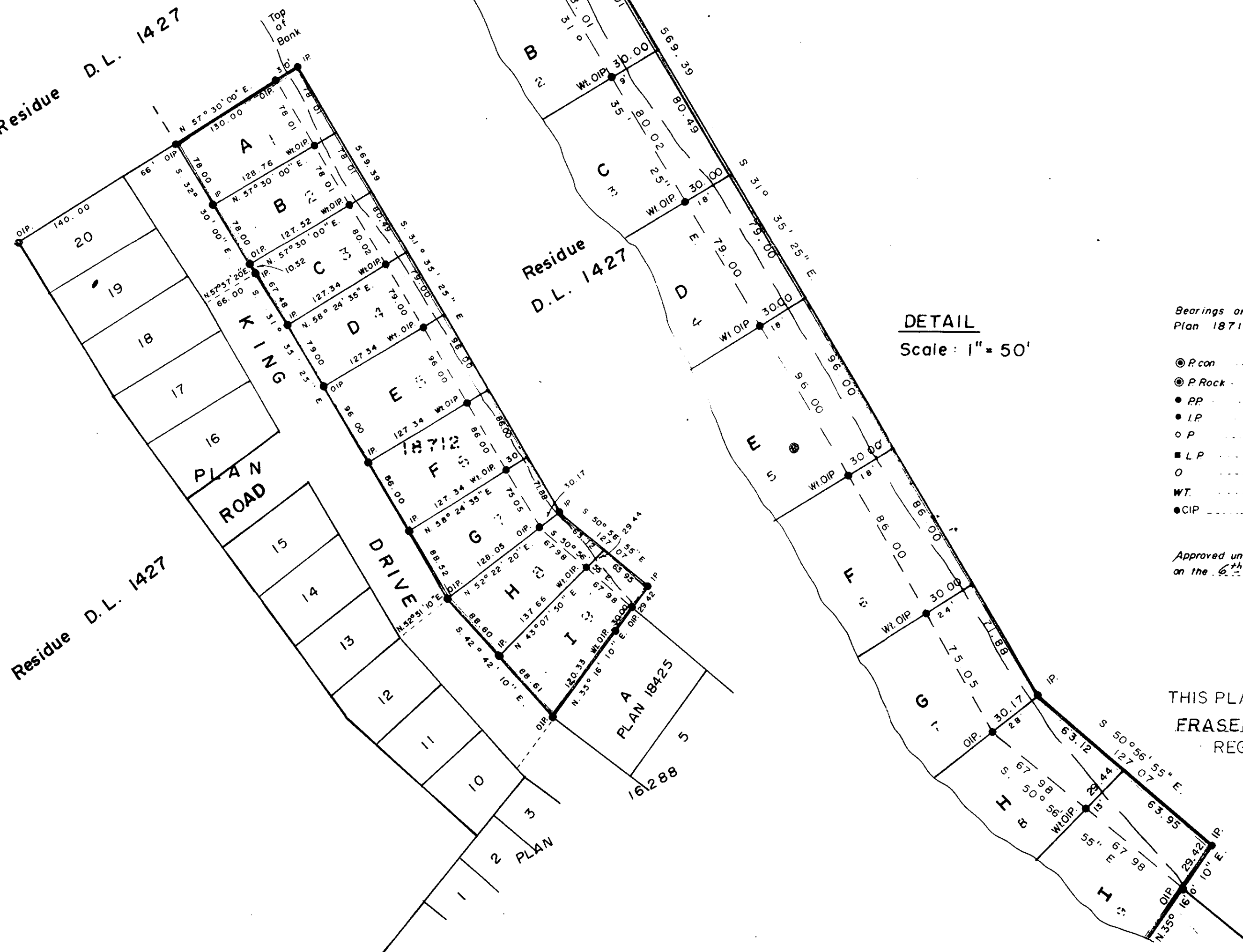
Typical Section



Residue D.L. 1427

Residue D.L. 1427

Residue D.L. 1427



DETAIL
Scale: 1" = 50'

Bearings are astronomic and are derived from
Plan 18712.

- P.con Standard Concrete Post.
- P.Rock Standard Rock Post.
- PP Standard Pipe Post.
- I.P Standard Iron Post.
- P Wooden Post.
- L.P Lead Plug.
- Denoting "Old"
- WT Denoting "Witness"
- CIP Capped Iron Post

Approved under the Land Registry Act
on the 6th day of JULY 1971.

[Signature]
Approving Officer

THIS PLAN LIES WITHIN THE
FRASER-FORT-GEORGE
REGIONAL DISTRICT

I, V. Bartell of the City of Prince George
British Columbia Land Surveyor, make oath and
say that I was present at and did personally
superintend the survey represented by this
plan and that the survey and plan are correct.
The said survey was completed on
the 25 day of May 1971.

[Signature]

Sworn before me at Prince George
this 27 day of May 1971.

[Signature]
A commissioner for taking affidavits
for British Columbia.

Owner

Witness

McWilliam-Whyte-Goble & Associates
B.C. LAND SURVEYORS
PRINCE GEORGE/SMITHERS/KAMLOOPS

REF No 69056 - C