

B.C. HYDRO AND POWER AUTHORITY
 PATRICIA-CHIEF LAKE TRANSMISSION LINE
 PLAN OF RIGHT-OF-WAY THROUGH
 LOT 83, PLAN 10868
 DISTRICT LOT 936
 CARIBOO DISTRICT

PLAN No **19403**

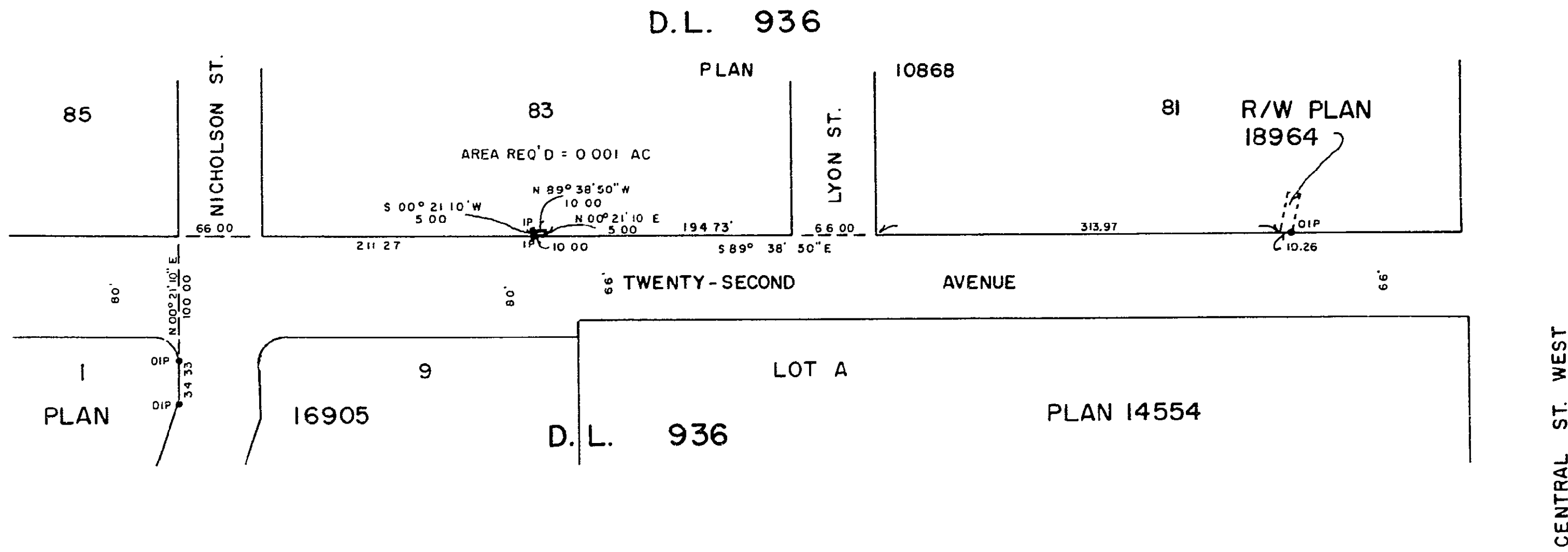
Deposited in the Land Registry
 Office at Prince George, B.C. this
~~28th~~ day of JUNE, 1971.

[Signature]
 DEPUTY Registrar

SCALE: 1" = 100'

NOTE: Bearings are astronomic, derived from the North
 boundary of 22nd Avenue as shown on Plan 18964

LEGEND: • OIP denotes an old iron pin found.
 • IP denotes an iron pin set.



I, DONALD A. DUFFY or the City of Prince George, a British Columbia Land Surveyor, make oath and say that I was present at and did personally superintend the survey represented by this plan and that the survey and plan are correct. The said survey was completed on the 12th day of October, 1970.

[Signature]
 B.C.L.S.

Sworn before me this 18th
 day of DEC., 1970.

[Signature]
 A Commissioner for taking Affidavits
 for British Columbia.

I hereby certify that this is a true copy of the Official Plan on deposit in the Department of Lands, Forests and Water Resources and numbered Plan 21 Tube 984.

[Signature]
 Surveyor General, Victoria B.C.
 June 23, 1971.

This plan lies within the Fraser-Fort George
 Regional District.