

PLAN OF SUBDIVISION OF PART OF  
S.W. 1/4 OF  
D.L. 4047  
CARIBOO DISTRICT, BRITISH COLUMBIA

PLAN No 19392

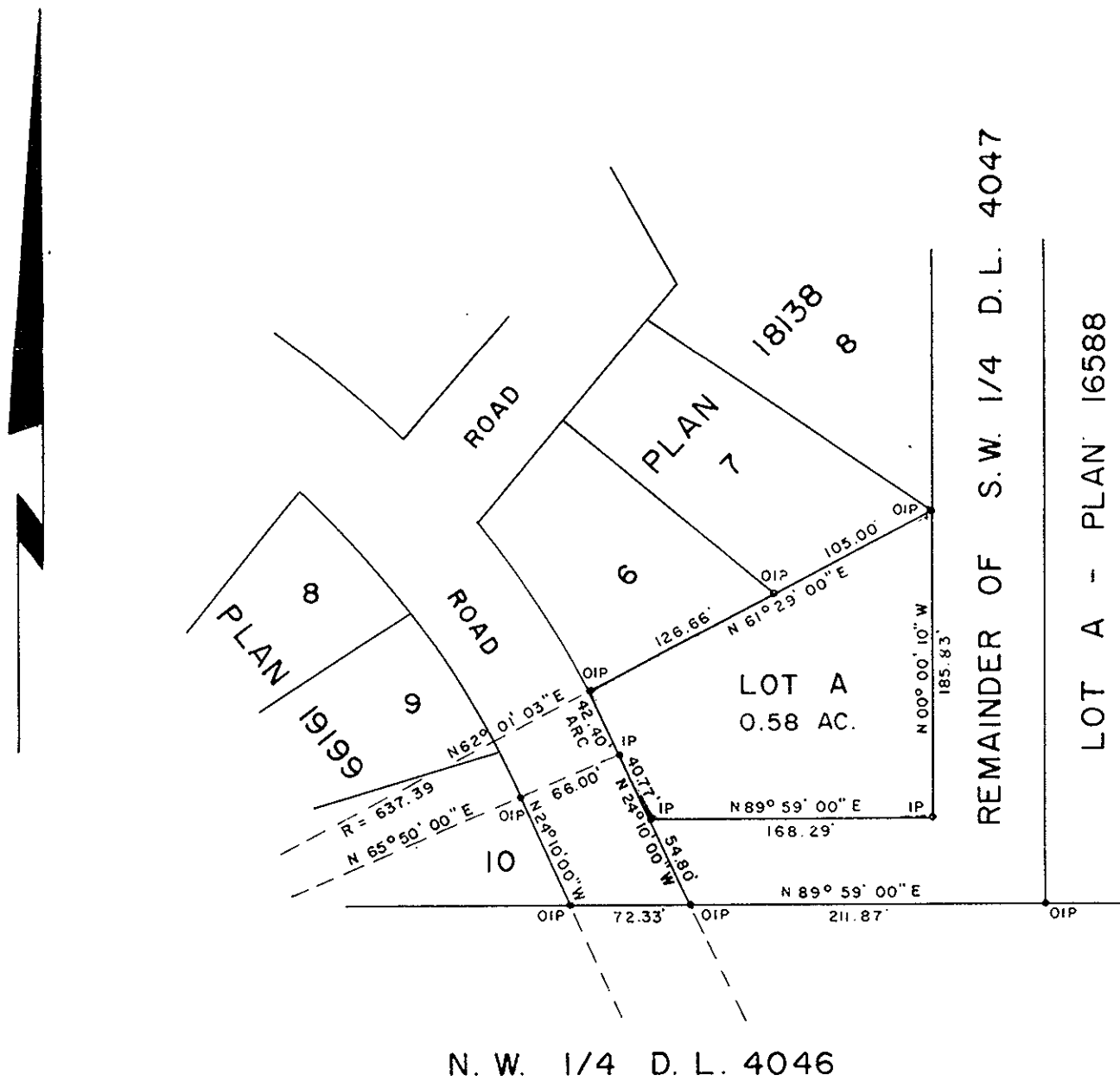
SCALE: 1" = 100'

Deposited in the Land Registry  
Office at Prince George, B.C. this  
18<sup>th</sup> day of June, 1971

NOTE: Bearings are astronomic, derived from the South  
boundary of the S.W. 1/4 of D.L. 4047, as  
shown on Plan 19199.

*[Signature]*  
DEPUTY Registrar

LEGEND: • OIP denotes an old iron pin found.  
• IP denotes an iron pin set.



I, DONALD A. DUFFY of the City of Prince George,  
a British Columbia Land Surveyor, make oath and say  
that I was present at and did personally superintend  
the survey represented by this plan and that the survey  
and plan are correct. The said survey was completed  
on the 18<sup>th</sup> day of May, 1971.

*[Signature]*  
B.C.L.S.

Sworn before me this 15  
day of June, 1971.

NORCAN DEVELOPMENT LTD.

Approved under the Land Registry Act  
this 14<sup>th</sup> day of June, 1971.

*[Signature]*  
Approving Officer, Dept. of Highways.

This plan lies within the Fraser-Fort George  
Regional District.

*[Signature]*  
A Commissioner for taking Affidavits  
for British Columbia.

W. D. USHER & ASSOCIATES  
LAND SURVEYORS  
PRINCE GEORGE - B.C.  
3605 E1-25