

RECEIVED

JUL 9 1971

PLAN OF SUBDIVISION OF
LOTS 13, 14, 15, 16, 17, BLOCK 16, PLAN 796
DISTRICT LOT 932
CARIBOO DISTRICT, BRITISH COLUMBIA

CITY ASSESSOR
PRINCE GEORGE

PLAN No 19362

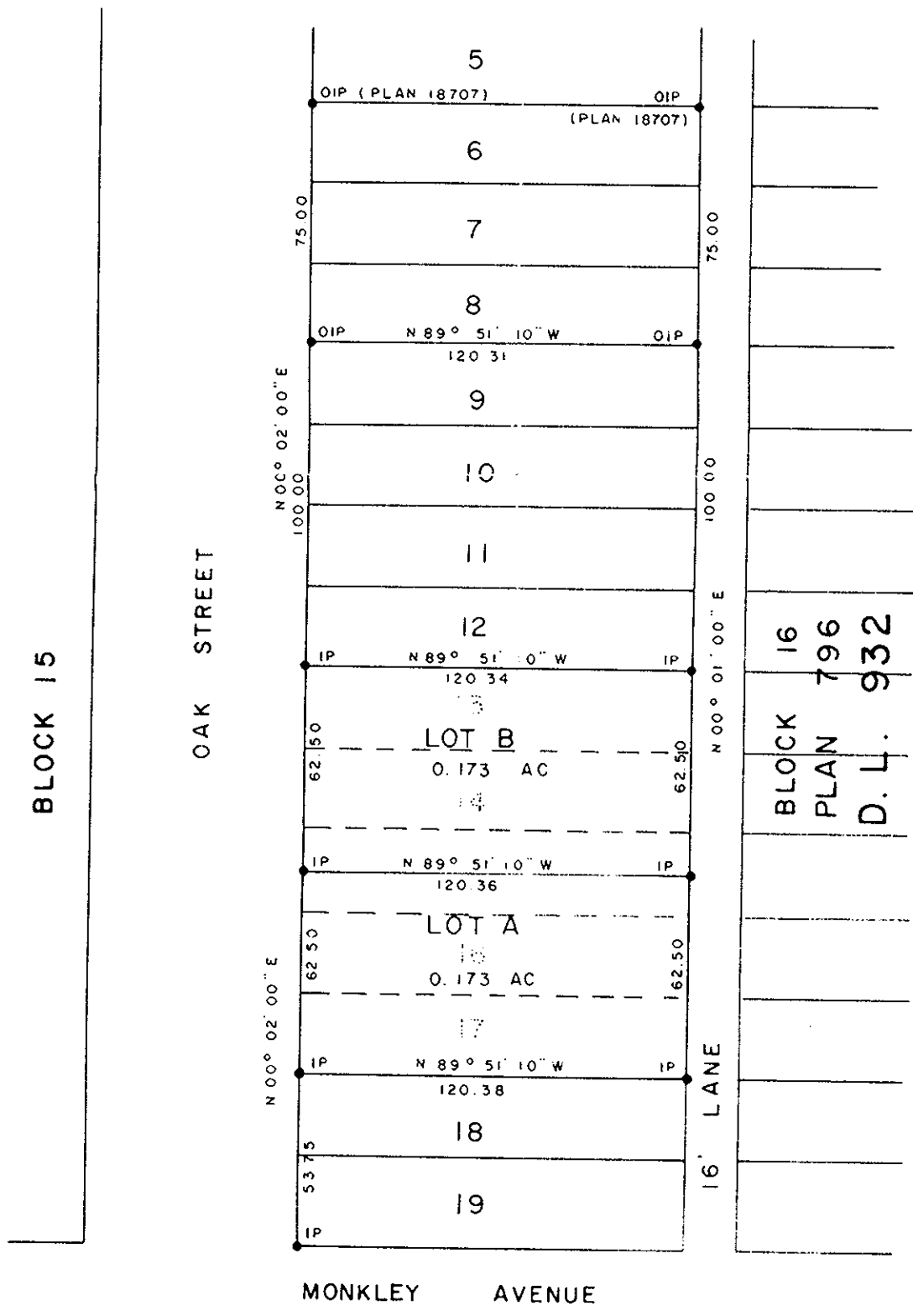
Deposited in the Land Registry
Office at Prince George, B.C. this
31st day of May, 1971.

[Signature]
Registrar

SCALE: 1" = 50'

NOTE: Bearings are astronomic, derived from the West
boundary of Lots 6 to 8, Block 16, as shown
on Plan 18707.

LEGEND: •OIP denotes an old iron pin found.
•IP denotes an iron pin set.



BLOCK 16
PLAN 796
D.L. 932

BREADNER LTD.
Malcolm K. Breadner
President

DONALD A DUFFY of the City of Prince George,
a British Columbia Land Surveyor, make oath and say
that he was present at and did personally superintend
the survey represented by this plan and that the survey
and plan are correct. The said survey was completed
on the 23rd day of March, 1971.

[Signature]
B.C.L.S.

sworn before me this 7
day of *March*, 1971

[Signature]
A Commissioner for taking Affidavits
for British Columbia

Owner *Be Wood Const Ltd*

Witness *W. A. ...*
[Signature]

Approved under the Land Registry Act
this 6th day of *APRIL*, 1971

C. E. Opat.
Approving Officer, City of Prince George

This plan lies within the Fraser-Fort George
Regional District.

D. USHER & ASSOCIATES
LAND SURVEYORS
PRINCE GEORGE B.C.
E1 10 3537