

PLAN OF SUBDIVISION OF
 LOTS 9 TO 16 INCLUSIVE, BLOCK 22
 LOTS 5 TO 16 INCLUSIVE, BLOCK 23
 PART OF ADJACENT CLOSED LANES
 PLAN 701
DISTRICT LOT 934
 CARIBOO DISTRICT, BRITISH COLUMBIA

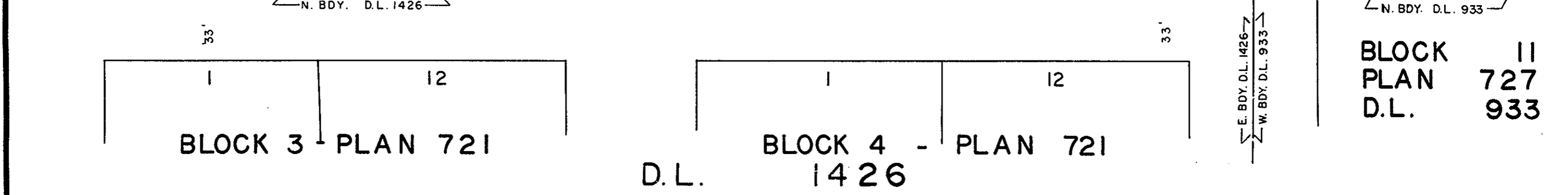
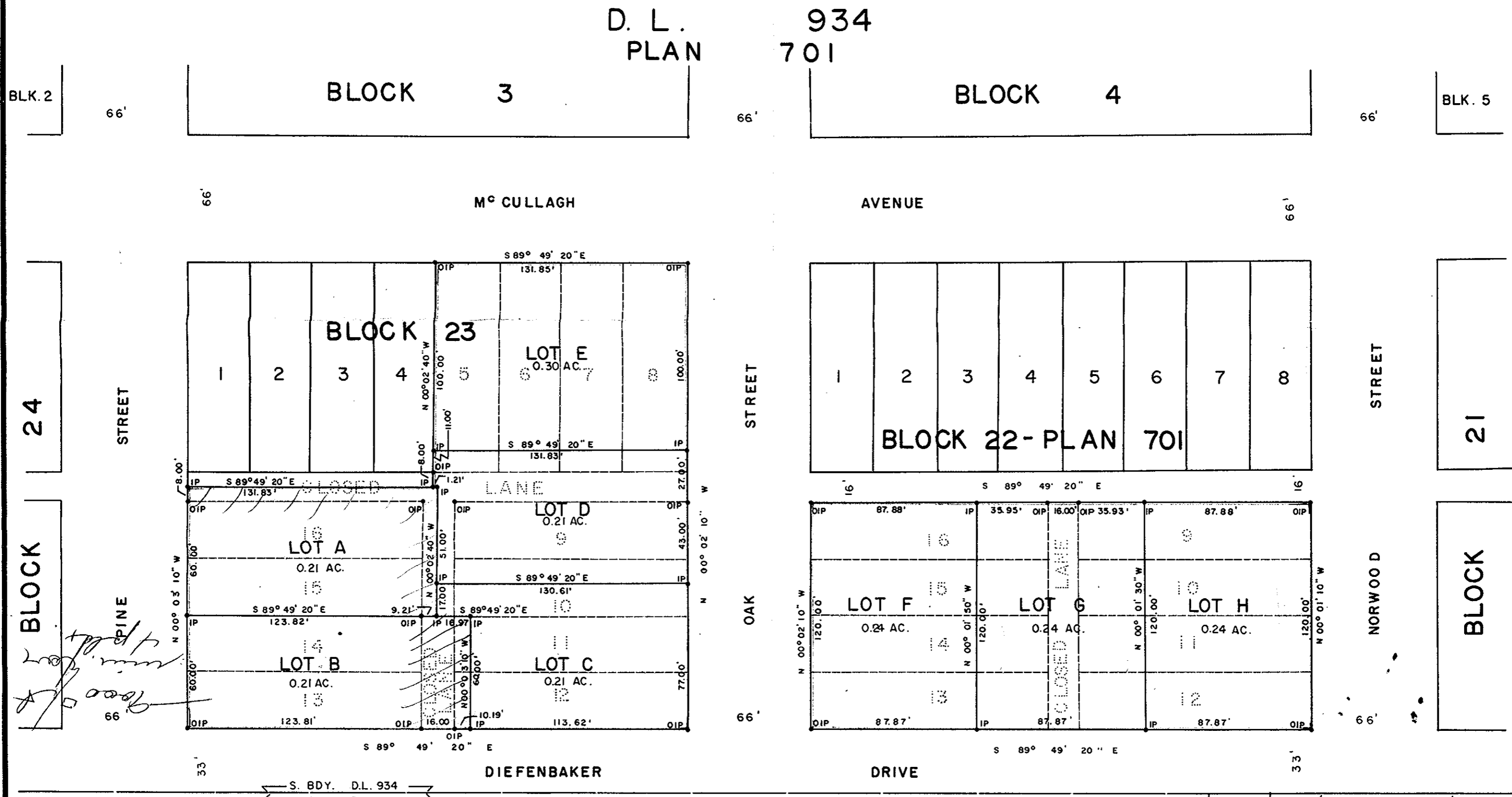
PLAN No 19342
 Deposited in the Land Registry
 Office at Prince George, B.C. this
13 day of MAY, 1971

T. W. CARLOW
 Registrar

SCALE: 1" = 50'

NOTE: Bearings are astronomic, derived from the south boundary
 of Block 22, Plan 701, D.L. 934, as shown on Plan 18776

LEGEND: • OIP denotes an old iron pin found.
 • IP denotes an iron pin placed on this survey.



I, DONALD A. DUFFY, of the City of Prince George,
 a British Columbia Land Surveyor, make oath and say
 that I was present at and did personally superintend
 the survey represented by this plan and that the survey
 and plan are correct. The said survey was completed
 on the 20th day of JANUARY, 1971.

[Signature]
 B.C.L.S.

Sworn before me this 20th
 day of JANUARY, 1971

[Signature]
 A Commissioner for taking Affidavits
 for British Columbia.

Biddle Holdings Ltd.

[Signature]
 Mortgagee

Mortgagee

Witness
 Mortgagee:
 Canada Permanent Mortgage Corporation

Approved under the Land Registry Act
 this 22nd day of JAN, 1971.

[Signature]
 Approving Officer, City of Prince George.

This plan lies within the Fraser-Fort George
 Regional District.