

RECEIVED

JUN 22 1971

CITY ASSESSOR  
PRINCE GEORGE

PLAN OF SUBDIVISION OF  
LOTS 1, 2, 3 & 4, BLOCK 23,  
PLAN 701 *adjacent Part of closed Lane*  
DISTRICT LOT 934  
CARIBOO DISTRICT - B. C.

PLAN NO. 19341

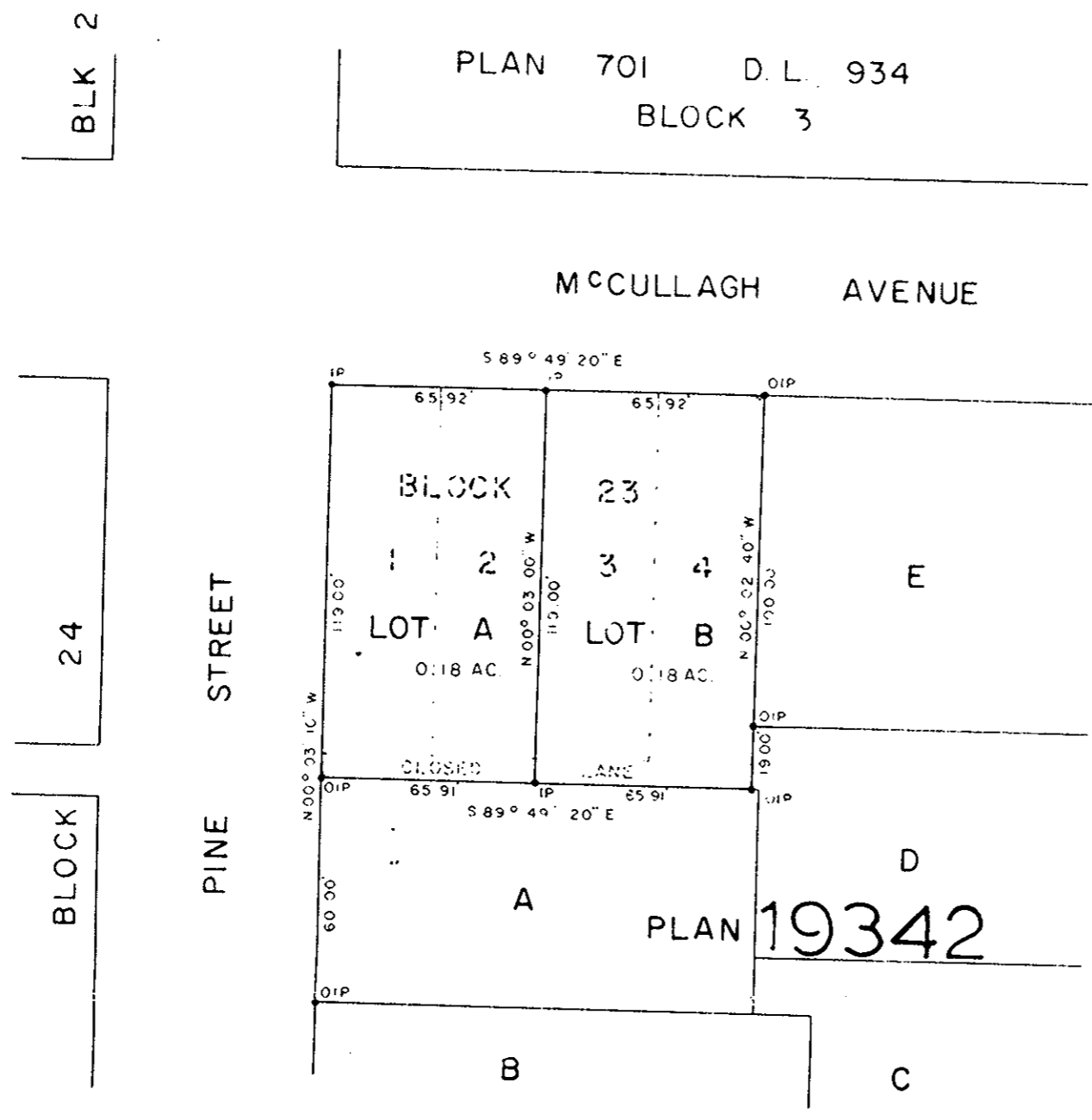
Registered in the Land Registry  
Office of Prince George, B.C. this  
23<sup>rd</sup> day of May 1971

Registrar

SCALE: 1" = 50'

NOTE: Bearings are astronomic, derived from  
the East boundary of Lot E, Plan 19342

LEGEND: • OIP denotes an old iron pin found  
• IP denotes an iron pin set



DONALD A. DUFFY of the City of Prince George  
a British Columbia Land Surveyor, make oath and say  
that he was present at and did personally superintend  
the survey represented by this plan and that the survey  
and plan are correct. The said survey was completed  
on the 5<sup>th</sup> day of May 1971

Sworn before me this 5<sup>th</sup>  
day of May 1971

*[Signature]*  
A Commissioner for taking Affidavits  
for British Columbia

OWNER *[Signature]*  
WITNESS *[Signature]*

Approved under the Land Registry Act  
this 7<sup>th</sup> day of MAY 1971

*[Signature]*  
Approving Officer, City of Prince  
George, B.C.

This plan lies with the Fraser-Port George  
Regional District

W. J. BUSH & ASSOCIATES  
LAND SURVEYORS  
PRINCE GEORGE  
3225 - B