

RECEIVED

JUN 22 1971

PLAN OF SUBDIVISION OF
LOTS 9, 10 & 11, BLOCK 6, PLAN 721
DISTRICT LOT 1426
CARIBOO DISTRICT - B. C.

CITY ASSESSOR
PRINCE GEORGE

PLAN No 19336

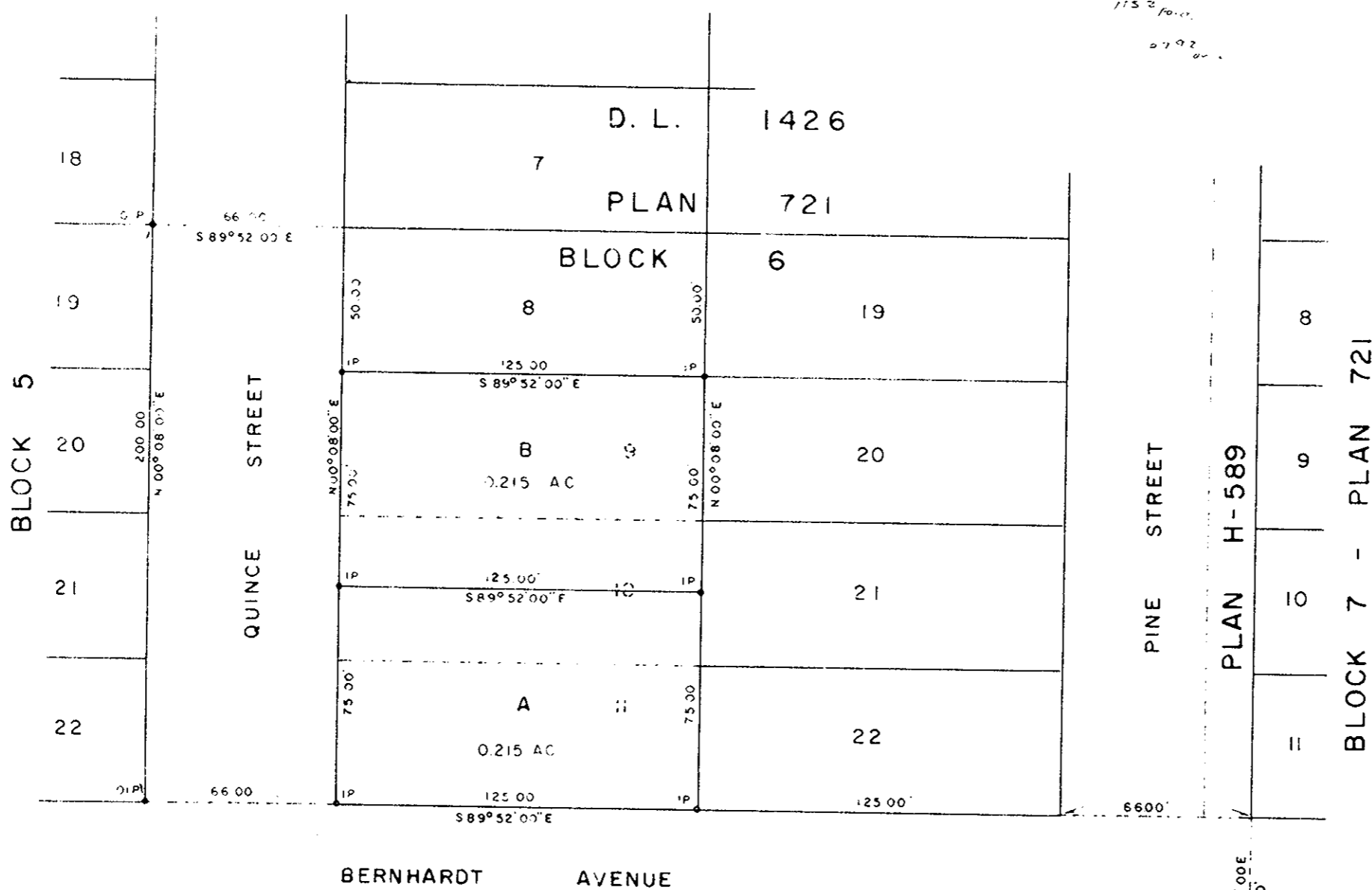
Deposited in the Land Registry
Office at Prince George, B.C. this
11 day of MAY, 1971

Registrar

SCALE: 1" = 50'

NOTE: Bearings are astronomic, derived from
the East boundary of Block 5.

LEGEND: • OIP denotes an old iron pin found
• IP denotes an iron pin set.



DONALD A DUFFY of the City of Prince George,
a British Columbia Land Surveyor, make oath and say
that he was present at and did personally superintend
the survey represented by this plan and that the survey
and plan are correct. The said survey was completed
on the 3rd day of MAY, 1971.

Sworn before me this 4th
day of May, 1971.

Commissioner for Taking Affidavits
for British Columbia

OWNER *Wm N. Letchford* Approved under the Land Registry Act
this 5th day of MAY, 1971

WITNESS *J. H. ... C. E. Obit*
Approving Officer, City of Prince George

OWNER *Wm N. Letchford* This plan lies within the Fraser-Fort George
Regional District

WITNESS *J. H. ...*

W. D. USHER & ASSOCIATES
LAND SURVEYORS
PRINCE GEORGE - B. C.
EE-6 3607