

EXPLANATORY PLAN OF  
TRANSMISSION LINE RIGHT OF WAY  
THROUGH THE NORTH EAST 1/4  
AND THE NORTH WEST 1/4  
OF DISTRICT LOT 2005, CARIBOO DISTRICT  
PROVINCE OF BRITISH COLUMBIA.

93G/15

SCALE : 1 inch = 200 feet

Bearings are astronomic and are derived from  
Plan C.G. 2204

PLAN No. 19321

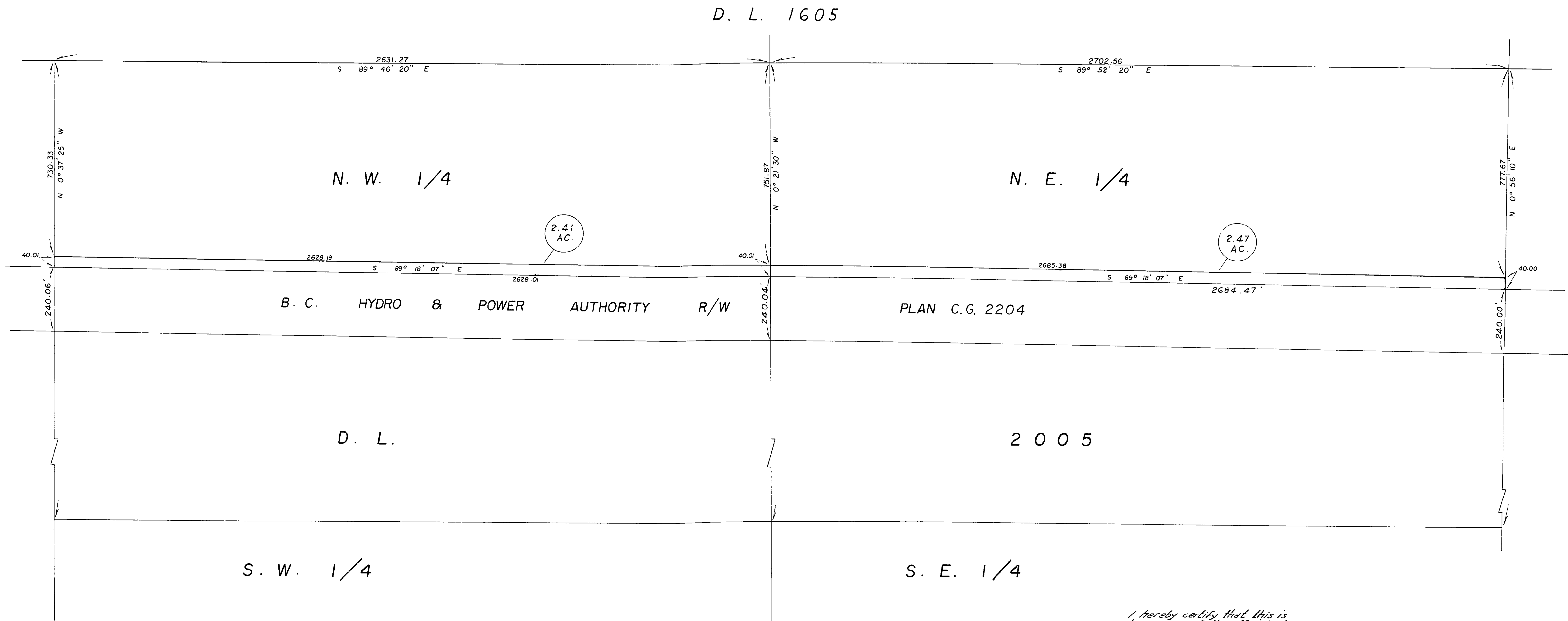
Deposited in the Land Registry Office  
at Prince George, B.C. this 4<sup>th</sup> day  
of May, 1970.

*[Signature]*  
Registrar

BOOK OF REFERENCE

| No. | Description        | Area     | Centre Line Distance |
|-----|--------------------|----------|----------------------|
| 1   | N.E. 1/4 D.L. 2005 | 2.47 Ac. | 2684.92'             |
| 2   | N.W. 1/4 D.L. 2005 | 2.41 Ac. | 2628.10'             |

This plan lies within the Fraser - Fort George  
Regional District.



I hereby certify that this is  
a true copy of the official plan  
on deposit in the Department of  
Lands, Forests, and Water Resources  
and numbered 2 tube 389.

*[Signature]*  
Surveyor General, Victoria, B.C.  
April 29, 1971.

Certified correct according to Land Registry  
Office Records :

*[Signature]* B.C.L.S.  
November 6, 1970