

PLAN OF SUBDIVISION OF PART OF
N. 1/2 OF S.E. 1/4 OF D.L. 3684
CARIBOO DISTRICT, BRITISH COLUMBIA

(DO) NO BASE MAP

SCALE: 1" = 200'

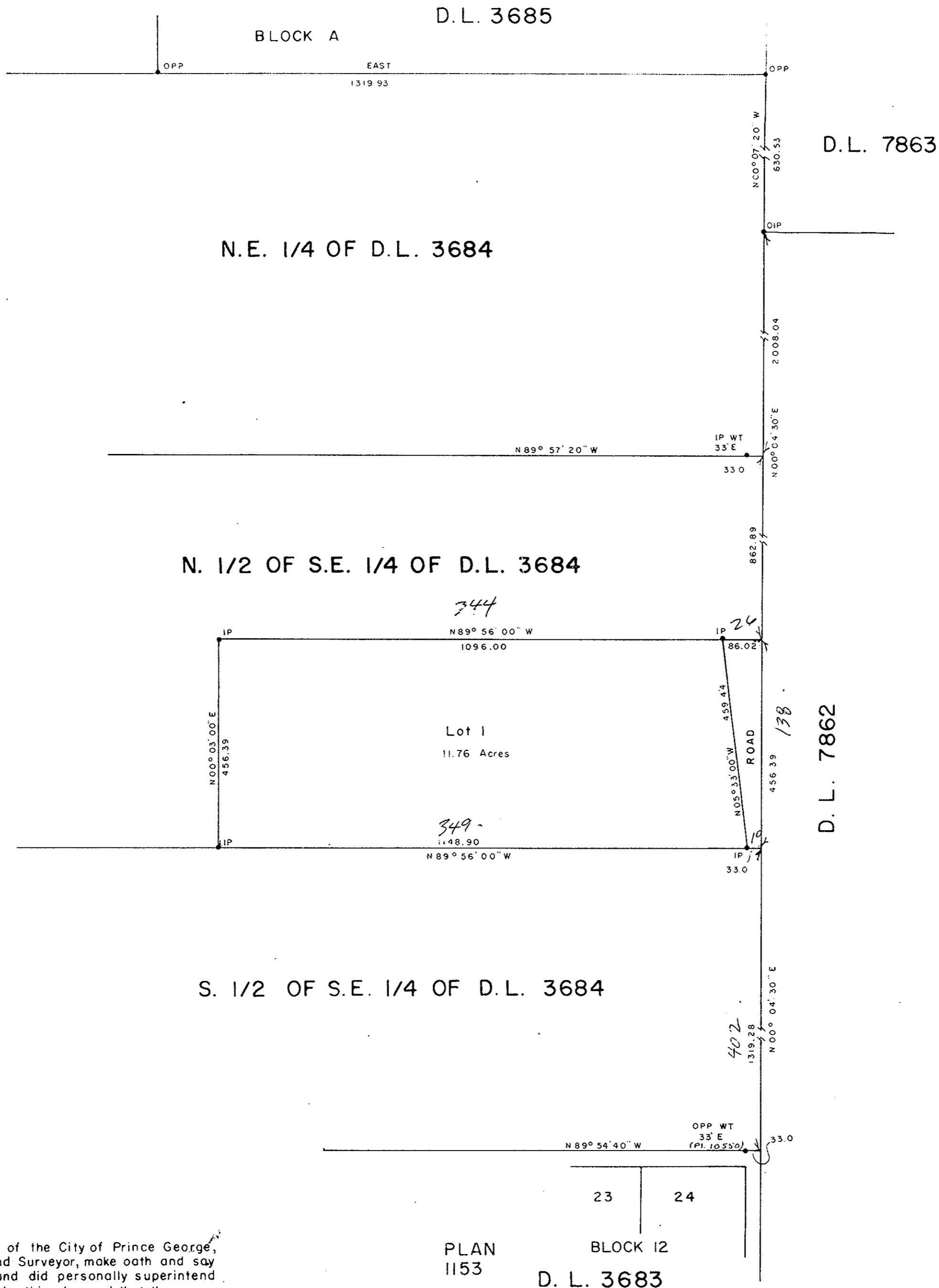
NOTE: Bearings are astronomic, derived from the South boundary of Block A, D.L. 3685.

LEGEND: • OPP denotes an old pipe post found.
• OIP denotes an old iron pin found.
• IP denotes an iron pin set.

PLAN N^o 19297

Deposited in the Land Registry Office at Prince George, B.C. this 22nd day of APRIL, 1971

[Signature]
Registrar



I, DONALD A. DUFFY of the City of Prince George, a British Columbia Land Surveyor, make oath and say that I was present at and did personally superintend the survey represented by this plan and that the survey and plan are correct. The said survey was completed on the 24th day of November, 1970.

[Signature]
B.C.L.S.

Sworn before me this 29TH day of JANUARY, 1971.

[Signature]
A Commissioner for taking Affidavits for British Columbia.

PLAN 1153 BLOCK 12
D. L. 3683

[Signature]
Owner

[Signature]
Witness

REAPPROVED:

[Signature]
Approving Officer, Dept. of Highways
This 16th Day of April, 1971.
Approved under the Land Registry Act this 26th day of January, 1971.

[Signature]
Approving Officer, Dept. of Highways.

This plan lies within the Fraser-Fort George Regional District.