

PLAN OF SUBDIVISION OF PART OF
 FRACTIONAL S.E. 1/4 AND
 E. 1/2 OF S.W. 1/4 OF
DISTRICT LOT 753
 CARIBOO DISTRICT, BRITISH COLUMBIA

SCALE: 1" = 100'

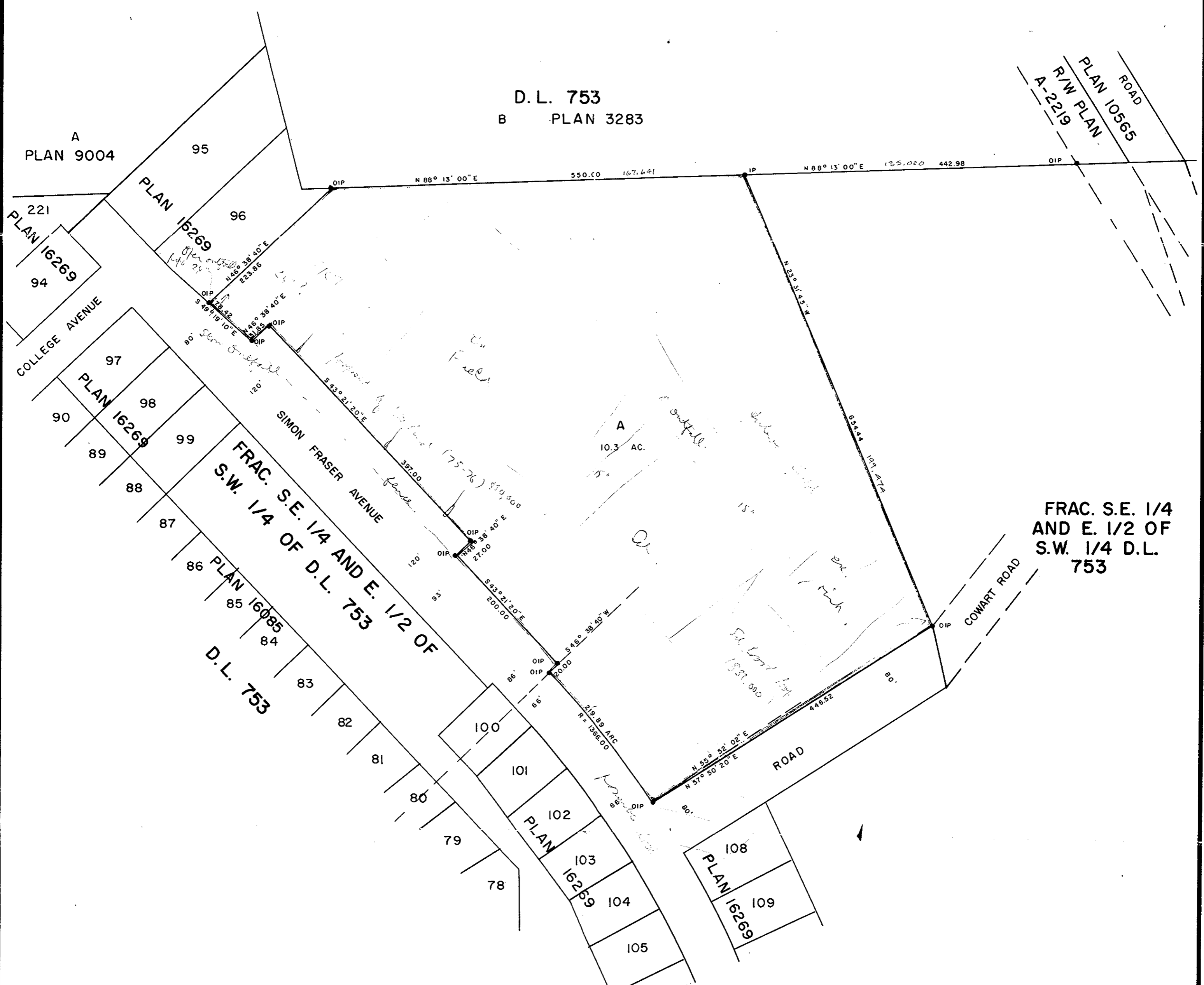
NOTE: Bearings are astronomic, derived from the South boundary of Lot B, Plan 3283 as shown on Plan 16269.

LEGEND: ●OIP denotes an old iron pin found.
 ●IP denotes an iron pin set

PLAN No **19269**

Deposited in the Land Registry Office at Prince George, B.C. this 2 day of APRIL, 1971

E. J. Raven
 DEPUTY Registrar



D. L. 753
 B PLAN 3283

FRAC. S.E. 1/4 AND E. 1/2 OF S.W. 1/4 D.L. 753

I, DONALD A. DUFFY of the City of Prince George, a British Columbia Land Surveyor, make oath and say that I was present at and did personally superintend the survey represented by this plan and that the survey and plan are correct. The said survey was completed on the 28th day of January, 1971.

Donald A. Duffy
 B.C.L.S.

Sworn before me this 22nd day of MARCH, 1971.

W. D. Usher
 A Commissioner for taking Affidavits for British Columbia.

ROMAN CATHOLIC EPISCOPAL CORPORATION OF PRINCE RUPERT

Fergus O. Grady

Approved under the Land Registry Act this 17th day of March, 1971.

W. D. Usher
 Approving Officer, Dept. of Highways.

This plan lies within the Fraser-Fort George Regional District.